



Pulse Apartments

LYMINGTON ROAD, WEST HAMPSTEAD, LONDON NW6

£1,075,000



A lateral three bedroom luxury apartment boasting approx.

1146 sq ft in a modern development on the corner of Lymington Road and Finchley Road.

This flat boasts three lovely size bedrooms, two bathrooms (1 ensuite) and a modern fitted kitchen. The flat benefits from a very spacious lounge surrounded by large windows with a private balcony big enough to entertain, porter and an allocated underground parking space.

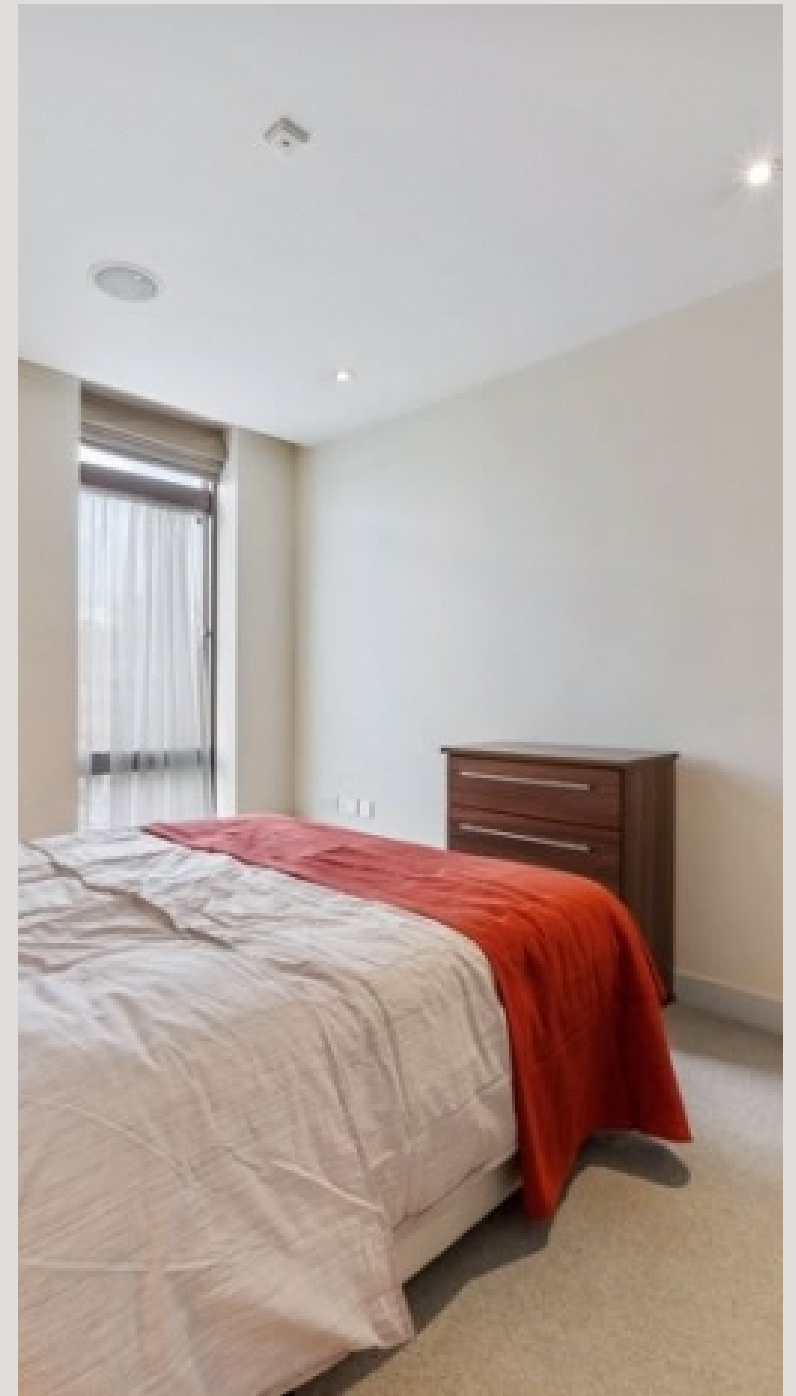
Further benefits include under floor heating and a concierge service as well as being a few minute's walk from transport (Jubilee and Metropolitan Lines) and the O2 Centre







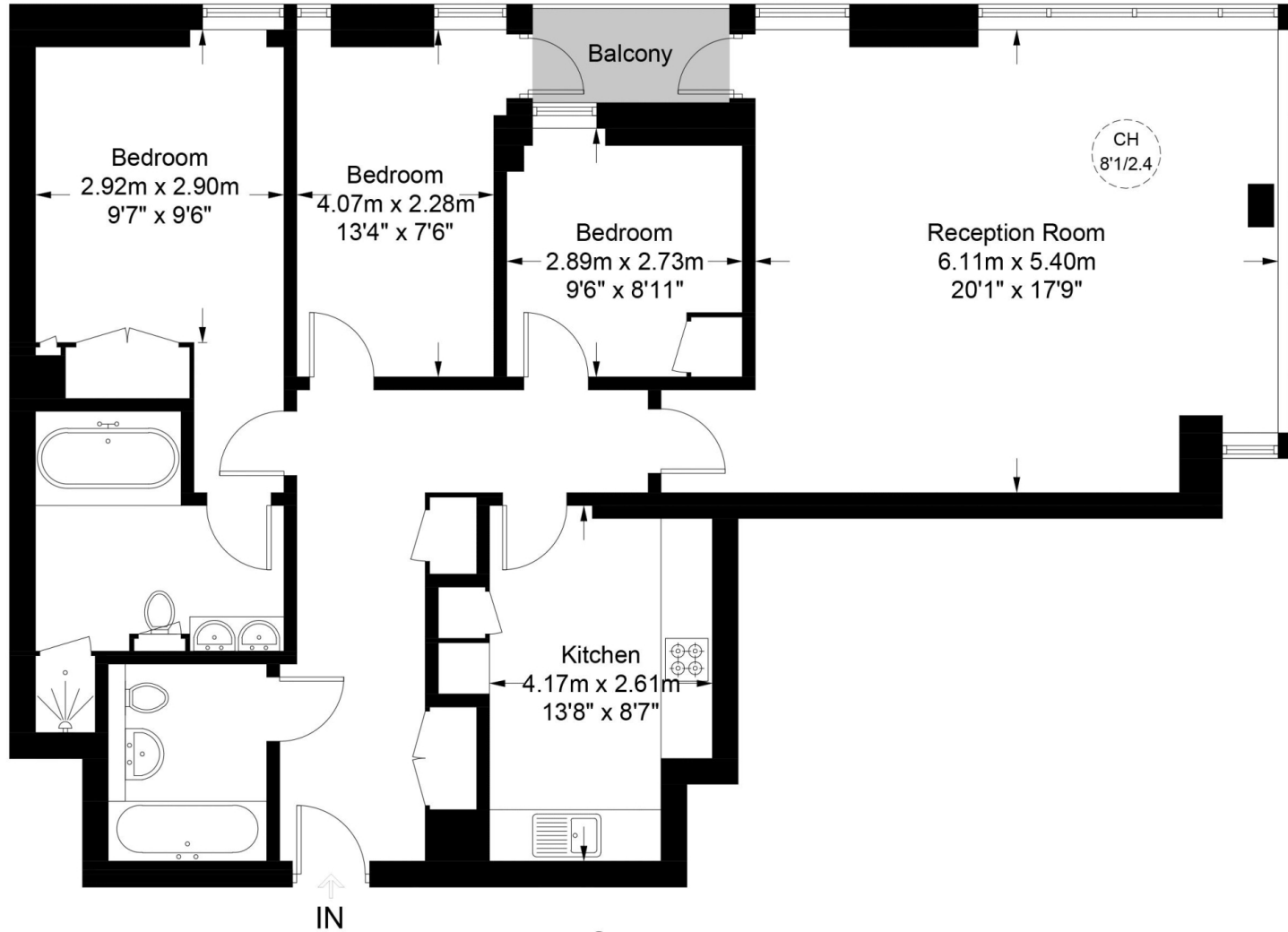






Lymington Road, NW6

Approximate Gross Internal Area = 1146 sq ft / 106.5 sq m



Fifth Floor

This plan is for layout guidance only. Not drawn to scale unless stated. Windows and door openings are approximate. Whilst every care is taken in the preparation of this plan, please check all dimensions, shapes and compass bearings before making any decisions reliant upon them. (ID758736)

Particulars

Property

Pulse Apartments, Lymington Road, West Hampstead,
£6,075,000

Rooms

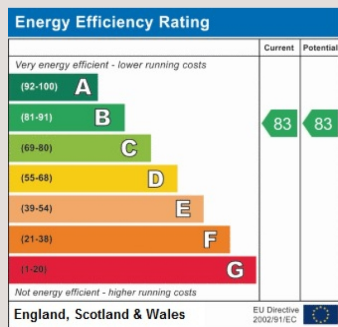


Features

- Close to both Hampstead and West Hampstead
- Chain Free
- Balcony
- Porter

Information

Council Tax



Oliver Kent

oliver.kent@vitaproperties.uk
+4477 7274 0351



Scan for our website





T: +4420 7759 2199

E: enquiries@vitaproperties.uk

Disclaimer: These particulars are prepared as a general guide for prospective purchasers or tenants and do not constitute, nor constitute part of, an offer or contract. All statements, descriptions, and measurements contained herein are given in good faith and are believed to be correct at the time of printing, but any intending purchaser or tenant should not rely on them as statements or representations of fact and must satisfy themselves by inspection or otherwise as to their correctness. Floor plans and photographs are for illustrative purposes only and may not be to scale. The position and size of doors, windows, appliances, and other features are approximate. Anti-Money Laundering (AML): In line with the Money Laundering, Terrorist Financing and Transfer of Funds Regulations 2017, we are required to carry out customer due diligence checks. Buyers/tenants will be asked to provide proof of identity, address, and source of funds before a sale or rental can be agreed. Data Protection (GDPR): Personal information supplied to Vita Properties will be processed in accordance with the General Data Protection Regulation (GDPR). Your details may be retained for legitimate business purposes relating to property services. Full details of our Privacy Policy are available on request.

All rights reserved.