



## Lithos Road

HAMPSTEAD, LONDON, NW3

£400



Available NOW is this decorated and refurbished two bed apartment set within a well maintained period conversion.

This property presents beautifully and offers lovely ash wood floors throughout.

Comprising of an open-plan reception room with a sleek integrated kitchen with breakfast bar and set beneath a gorgeous conservatory style roof, which floods the room natural light.

A sizable master bedroom with large bay windows, second small double bedroom, a fully tiled bathroom and finally an incredibly large garden.

Lithos Road is superbly situated for local transport links of Finchley Road, West Hampstead & Hampstead with convenient access to the O2 centre and local amenities of Finchley Road.





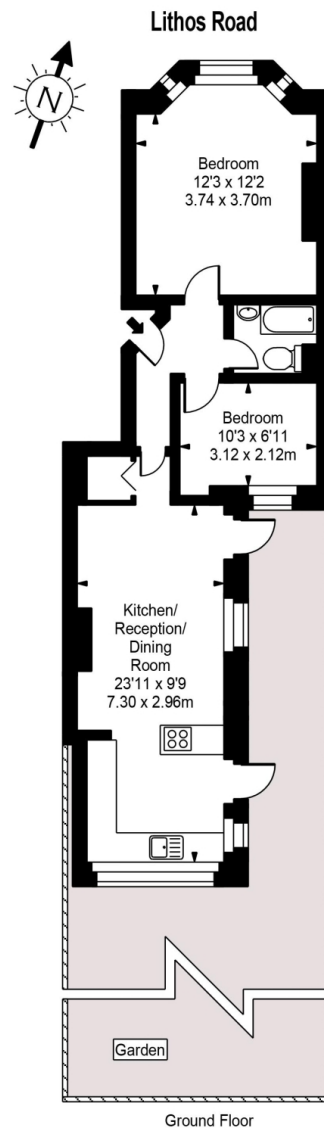






Scan for out video walkthrough





Approx Gross Internal Area **561 Sq Ft - 52.12 Sq M**

FOR ILLUSTRATIVE PURPOSES ONLY. NOT TO SCALE.  
 Whilst every attempt has been made to ensure the accuracy of the floorplan shown, all measurements, positioning, fixtures, fittings and any other data shown are an approximate interpretation for illustrative purposes only and are not to scale. No responsibility is taken for any error, omission, mis-statement or use of data shown.  
 Floor plan by www.bestangle.co.uk

# Particulars

## Property

Lithos Road, Hampstead, London, NW3  
£400

## Rooms

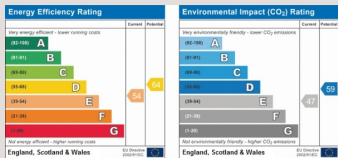


## Features

- Private south facing garden
- Wood floors
- Fresh & Modern
- Available NOW

## Information

Council Tax



Oliver Kent

[oliver.kent@vitaproperties.uk](mailto:oliver.kent@vitaproperties.uk)  
+4477 7274 0351



Scan for our website





T: +4420 7759 2199

E: [enquiries@vitaproperties.uk](mailto:enquiries@vitaproperties.uk)

Disclaimer: These particulars are prepared as a general guide for prospective purchasers or tenants and do not constitute, nor constitute part of, an offer or contract. All statements, descriptions, and measurements contained herein are given in good faith and are believed to be correct at the time of printing, but any intending purchaser or tenant should not rely on them as statements or representations of fact and must satisfy themselves by inspection or otherwise as to their correctness. Floor plans and photographs are for illustrative purposes only and may not be to scale. The position and size of doors, windows, appliances, and other features are approximate. Anti-Money Laundering (AML): In line with the Money Laundering, Terrorist Financing and Transfer of Funds Regulations 2017, we are required to carry out customer due diligence checks. Buyers/tenants will be asked to provide proof of identity, address, and source of funds before a sale or rental can be agreed. Data Protection (GDPR): Personal information supplied to Vita Properties will be processed in accordance with the General Data Protection Regulation (GDPR). Your details may be retained for legitimate business purposes relating to property services. Full details of our Privacy Policy are available on request.

All rights reserved.