



Rosslyn Hill

HAMPSTEAD, LONDON NW3

£1,850,000



Located on Rosslyn Hill in the heart of Hampstead Village is this fully modernised, lateral, three bedroom apartment which benefits direct access to a beautifully designed 65ft private landscaped garden and found within this charming period residence.

This outstanding home is approached via its own entrance, this excellent apartment offers flexible and well-proportioned living space featuring an exceptional double reception room with direct access to the private garden. The apartment, which is beautifully presented, comprises a generous principal bedroom with an ensuite bathroom, two further bedrooms, an additional bathroom and a separate guest WC. This apartment also benefits from a separate utility room.

Planning was consented but has lapsed for a rear and basement extension to create a sensational five bedroom family home which would extend to around 2,400 sq ft. Rosslyn Hill is conveniently located for the numerous fashionable cafes, restaurants and boutiques of Hampstead Village as well as the green open spaces of the Heath.

This property has excellent transport links located within walking distance - Hampstead (Northern line), (6 minutes, GoogleMaps), Belsize Park (Northern line) (9 minutes Google Maps) and





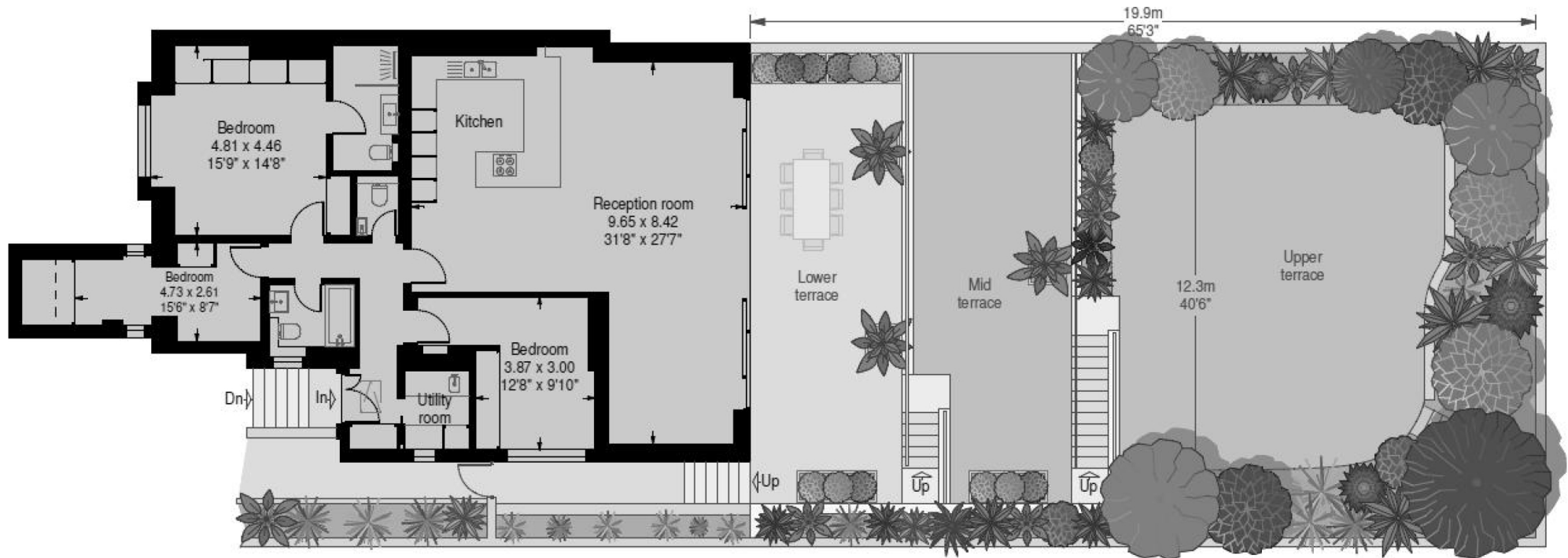






Rosslyn Hill, Hampstead NW3

Gross internal area (approx):
140.0 sq.m. (1507 sq.ft.)
For identification purposes only. Not to scale.
Proplan UK



Particulars

Property

Rosslyn Hill, Hampstead, London NW3
£1,850,000

Rooms

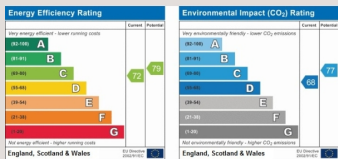


Features

- A Unique 65 ft tiered landscaped garden.
- Fantastic Double Reception Area for Entertaining
- Hampstead station is walking distance
- Located in the heart of Hampstead Village

Information

Council Tax



Oliver Kent

oliver.kent@vitaproperties.uk
+4477 7274 0351



Scan for our website





T: +4420 7759 2199
E: enquiries@vitaproperties.uk

Disclaimer: These particulars are prepared as a general guide for prospective purchasers or tenants and do not constitute, nor constitute part of, an offer or contract. All statements, descriptions, and measurements contained herein are given in good faith and are believed to be correct at the time of printing, but any intending purchaser or tenant should not rely on them as statements or representations of fact and must satisfy themselves by inspection or otherwise as to their correctness. Floor plans and photographs are for illustrative purposes only and may not be to scale. The position and size of doors, windows, appliances, and other features are approximate. Anti-Money Laundering (AML): In line with the Money Laundering, Terrorist Financing and Transfer of Funds Regulations 2017, we are required to carry out customer due diligence checks. Buyers/tenants will be asked to provide proof of identity, address, and source of funds before a sale or rental can be agreed. Data Protection (GDPR): Personal information supplied to Vita Properties will be processed in accordance with the General Data Protection Regulation (GDPR). Your details may be retained for legitimate business purposes relating to property services. Full details of our Privacy Policy are available on request.

All rights reserved.