



Chandos Way

HAMPSTEAD GARDEN SUBURB, LONDON NW11

£3,230



Available 23 July 2021 - A stunning new build five bedroom detached house (approx.

338 sq m/3645 sq ft) designed to reflect the Arts and Crafts architecture of Hampstead Garden Suburb.

This beautiful home offers lateral accommodation over two floors that opens onto a lawned rear garden.

It is luxuriously appointed throughout with heated marble floors to the reception areas and a superb kitchen/breakfast room.

Chandos Way is a prestigious private development close to both Hampstead Heath Extension and Golders Hill Park with Hampstead Village approximately 1 mile away.

Golders Green Northern Line tube station is within 0.5 miles.





Available 23 July 2021 - A stunning new build five bedroom detached house (approx. 338 sq m/3645 sq ft) designed to reflect the Arts and Crafts architecture of Hampstead Garden Suburb.

This beautiful home offers lateral accommodation over two floors that opens onto a lawned rear garden.

It is luxuriously appointed throughout with heated marble floors to the reception areas and a superb kitchen/breakfast room.

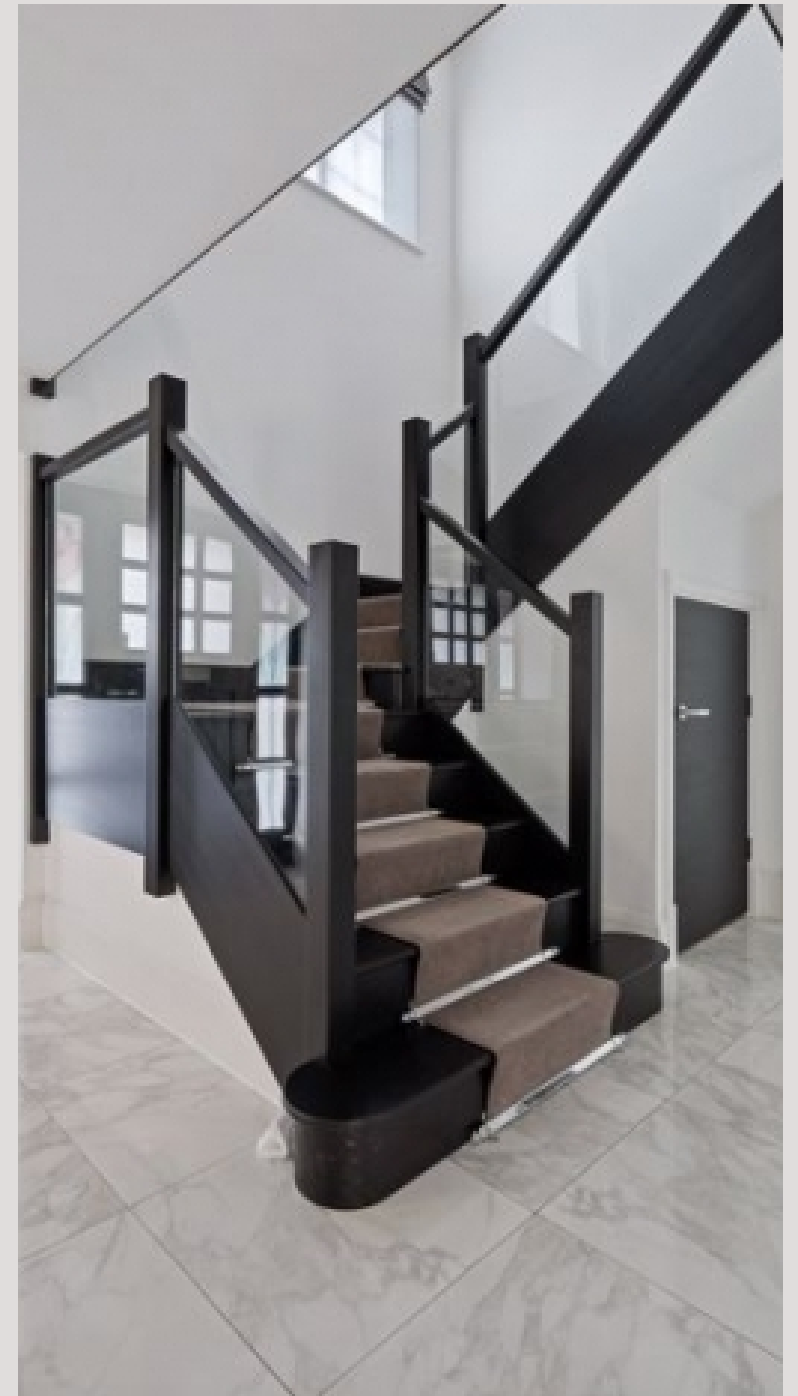
Chandos Way is a prestigious private development close to both Hampstead Heath Extension and Golders Hill Park with Hampstead Village approximately 1 mile away.

Golders Green Northern Line tube station is within 0.5 miles.









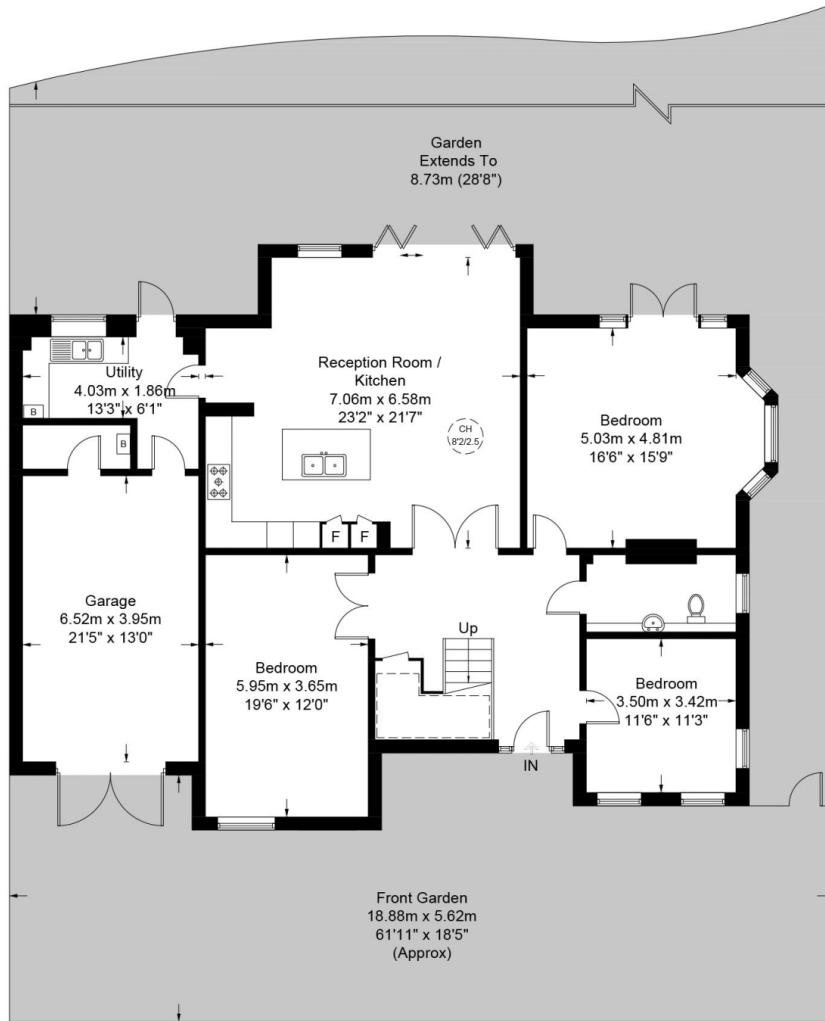


Chandos Way, NW11

Approximate Gross Internal Area = 3636 sq ft / 337.8 sq m
(Including Garage / Excluding Reduced Headroom)

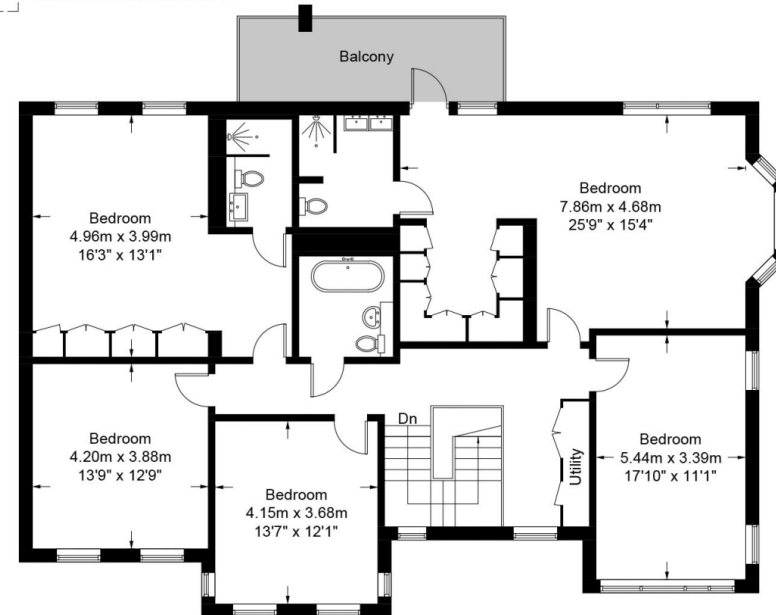
Reduced Headroom = 34 sq ft / 3.2 sq m

Total = 3670 sq ft / 341 sq m



Ground Floor

= Reduced headroom below 1.5m / 5'0"



First Floor

This plan is for layout guidance only. Not drawn to scale unless stated. Windows and door openings are approximate. Whilst every care is taken in the preparation of this plan, please check all dimensions, shapes and compass bearings before making any decisions reliant upon them. (ID748957)

Particulars

Property

Chandos Way, Hampstead Garden Suburb, London NW11
£3,230

Rooms

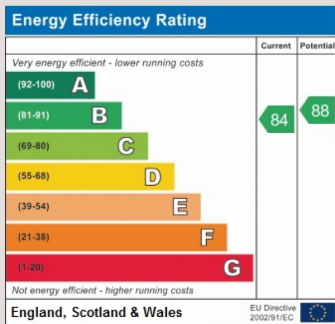


Features

- 5 BEDROOMS : BATHROOM : 2 EN SUITE SHOWER ROOMS
- GARAGE : PARKING
- GUEST WC : RECEPTION ROOM : DINING ROOM : OFFICE
- KITCHEN/BREAKFAST ROOM

Information

Council Tax



Oliver Kent

oliver.kent@vitaproperties.uk
+4477 7274 0351



Scan for our website





T: +4420 7759 2199

E: enquiries@vitaproperties.uk

Disclaimer: These particulars are prepared as a general guide for prospective purchasers or tenants and do not constitute, nor constitute part of, an offer or contract. All statements, descriptions, and measurements contained herein are given in good faith and are believed to be correct at the time of printing, but any intending purchaser or tenant should not rely on them as statements or representations of fact and must satisfy themselves by inspection or otherwise as to their correctness. Floor plans and photographs are for illustrative purposes only and may not be to scale. The position and size of doors, windows, appliances, and other features are approximate. Anti-Money Laundering (AML): In line with the Money Laundering, Terrorist Financing and Transfer of Funds Regulations 2017, we are required to carry out customer due diligence checks. Buyers/tenants will be asked to provide proof of identity, address, and source of funds before a sale or rental can be agreed. Data Protection (GDPR): Personal information supplied to Vita Properties will be processed in accordance with the General Data Protection Regulation (GDPR). Your details may be retained for legitimate business purposes relating to property services. Full details of our Privacy Policy are available on request.

All rights reserved.