



Loudoun Road
ST JOHNS WOOD, LONDON, NW8
£370

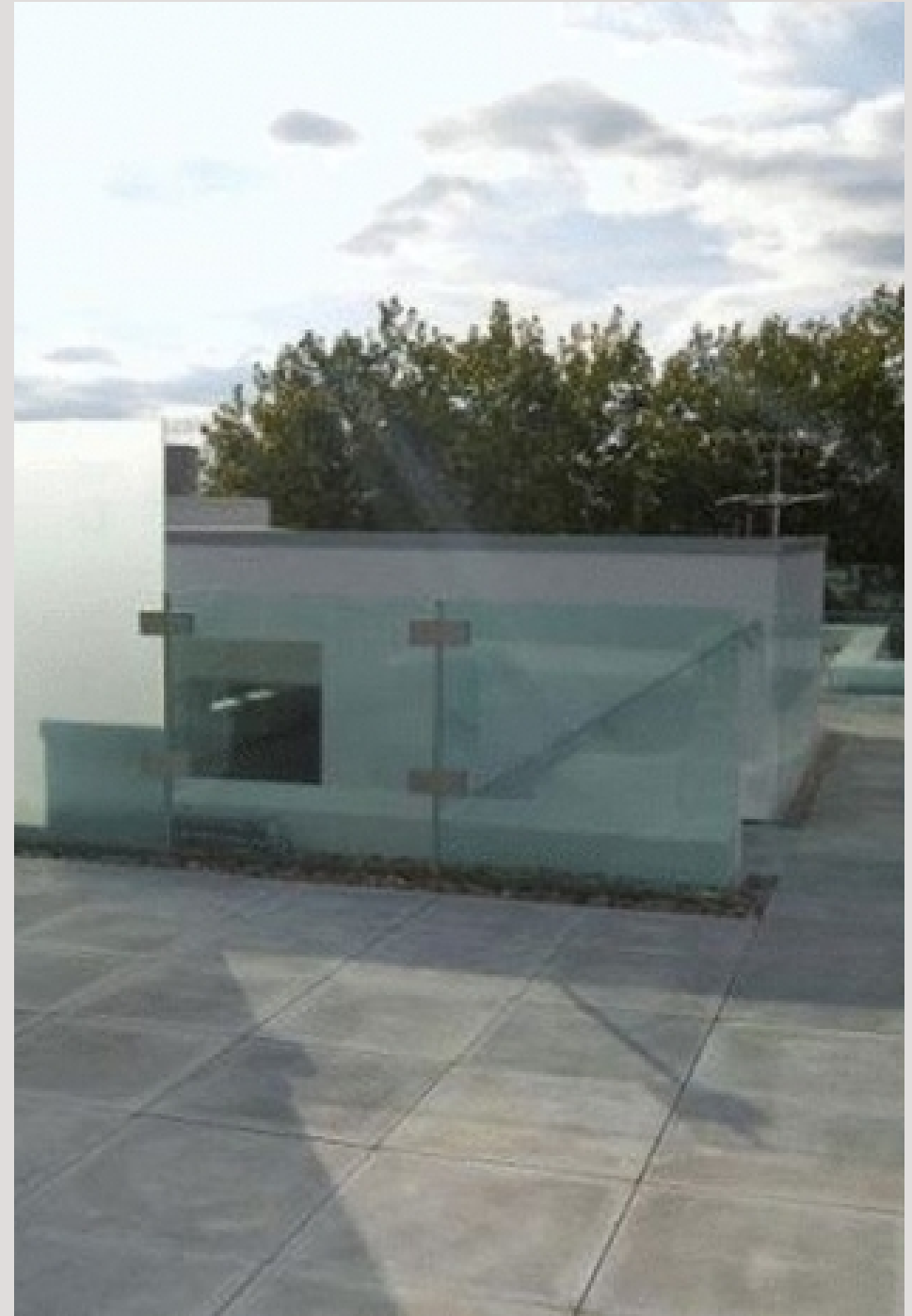


As main agents we are delighted to offer this contemporary apartment set on the first floor within a fabulous church conversion.

This exceptional property comprises fully fitted kitchen with Corrian worktops, open plan to a bright spacious reception, one double bedroom, fitted wardrobes, luxury modern bathroom.

The property further benefits from a communal roof terrace, underfloor heating, smoked oak wood flooring throughout.

conveniently located moments from South Hampstead and Swiss Cottage shops and restaurants as well as excellent transport links.





As main agents we are delighted to offer this contemporary apartment set on the first floor within a fabulous church conversion.

This exceptional property comprises fully fitted kitchen with Corrian worktops, open plan to a bright spacious reception, one double bedroom, fitted wardrobes, luxury modern bathroom.

The property further benefits from a communal roof terrace, underfloor heating, smoked oak wood flooring throughout.

conveniently located moments from South Hampstead and Swiss Cottage shops and restaurants as well as excellent and transport links.






THIRD FLOOR
GROSS INTERNAL
FLOOR AREA 549 SQ FT

APPROX. GROSS INTERNAL FLOOR AREA 549 SQ FT / 51 SQM

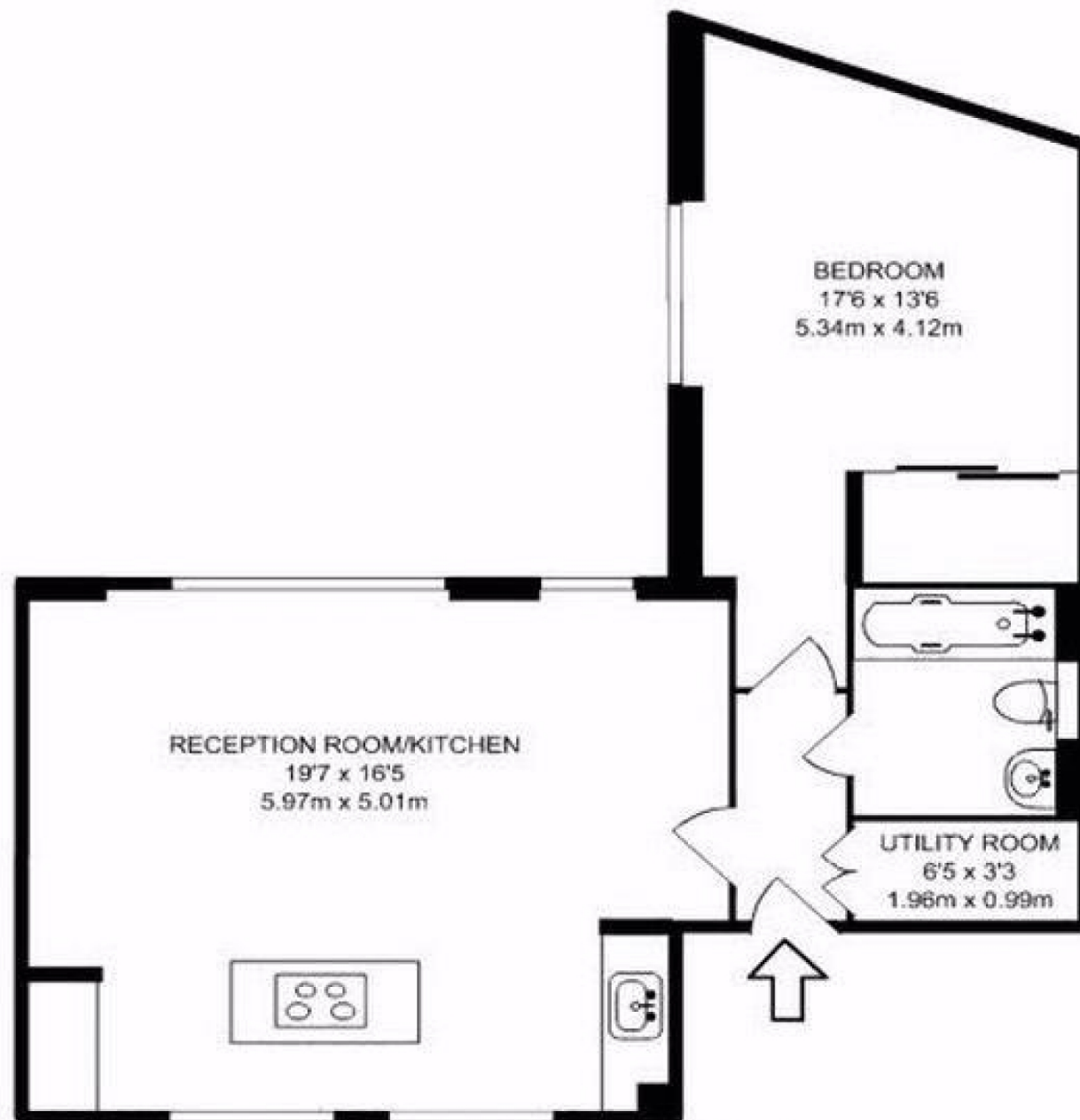
Ref:

Copyright **photoplan** 

Disclaimer: Floor plan measurements are approximate and are for illustrative purposes only. While we do not doubt the floor plan accuracy and completeness, you or your advisors should conduct a careful, independent investigation of the property in respect of monetary valuation







GROSS INTERNAL FLOOR AREA
589 SQ FT/54.74 SQ M

Particulars

Property

Loudoun Road, St Johns Wood, London, NW8
£370

Rooms



Features

- Council tax - E
- Ultra Modern
- Moments to South Hampstead and Swiss Cottage transport links
- Managed

Information

Council Tax



Oliver Kent

oliver.kent@vitaproperties.uk
+4477 7274 0351



Scan for our website





T: +4420 7759 2199

E: enquiries@vitaproperties.uk

Disclaimer: These particulars are prepared as a general guide for prospective purchasers or tenants and do not constitute, nor constitute part of, an offer or contract. All statements, descriptions, and measurements contained herein are given in good faith and are believed to be correct at the time of printing, but any intending purchaser or tenant should not rely on them as statements or representations of fact and must satisfy themselves by inspection or otherwise as to their correctness. Floor plans and photographs are for illustrative purposes only and may not be to scale. The position and size of doors, windows, appliances, and other features are approximate. Anti-Money Laundering (AML): In line with the Money Laundering, Terrorist Financing and Transfer of Funds Regulations 2017, we are required to carry out customer due diligence checks. Buyers/tenants will be asked to provide proof of identity, address, and source of funds before a sale or rental can be agreed. Data Protection (GDPR): Personal information supplied to Vita Properties will be processed in accordance with the General Data Protection Regulation (GDPR). Your details may be retained for legitimate business purposes relating to property services. Full details of our Privacy Policy are available on request.

All rights reserved.