



Canfield Gardens

SOUTH HAMPSTEAD, LONDON NW6

£1,500,000



Set within this imposing, ideally placed period mansion block is this beautiful five-bedroom apartment. Set on the second floor this apartment offers fantastic living space boasting a large reception with parquet flooring, a newly refurbished fully fitted kitchen/diner featuring German-made bespoke Rotpunkt cabinets; Silestone non-porous worktops; Deco Glaze glass splashback background; Quooker Boiling water tap dispensing instant boiling water and a Rangemaster Prof 100FX standing cooker/double oven. Off from the kitchen via the glass sliding doors, you have access to a quaint, private balcony with lovely views across the communal garden. Five double bedrooms, three of them being exceptionally sized and two boasting en-suite bathrooms. The master bedroom offers extensive built-in wardrobe space and an ultra-modern, spa-inspired ensuite with Italian Calacatta marble porcelain tiles, a large walk-shower with a contemporary modern concealed touch of a button water dispensing outlets. Vitra V-Care combined shower/bidet toilet with a remote control that has various washing features for increased hygiene and comfort. Separate family bathroom with Bette duo-steel bath





and Dornbracht luxury shower tapware and access to the boiler cupboard providing ample storage space. This stunning apartment is packed full of period features, high ceilings, lots of natural light, and also boasts noise-reducing, energy-saving double glazing throughout. This flat further benefits from 'first come first serve' off street parking, separate bicycle storage and a communal rear garden

Fantastically located just moments from the Jubilee & Metropolitan Line Underground Station at Finchley Road and also close to the O2 Centre.









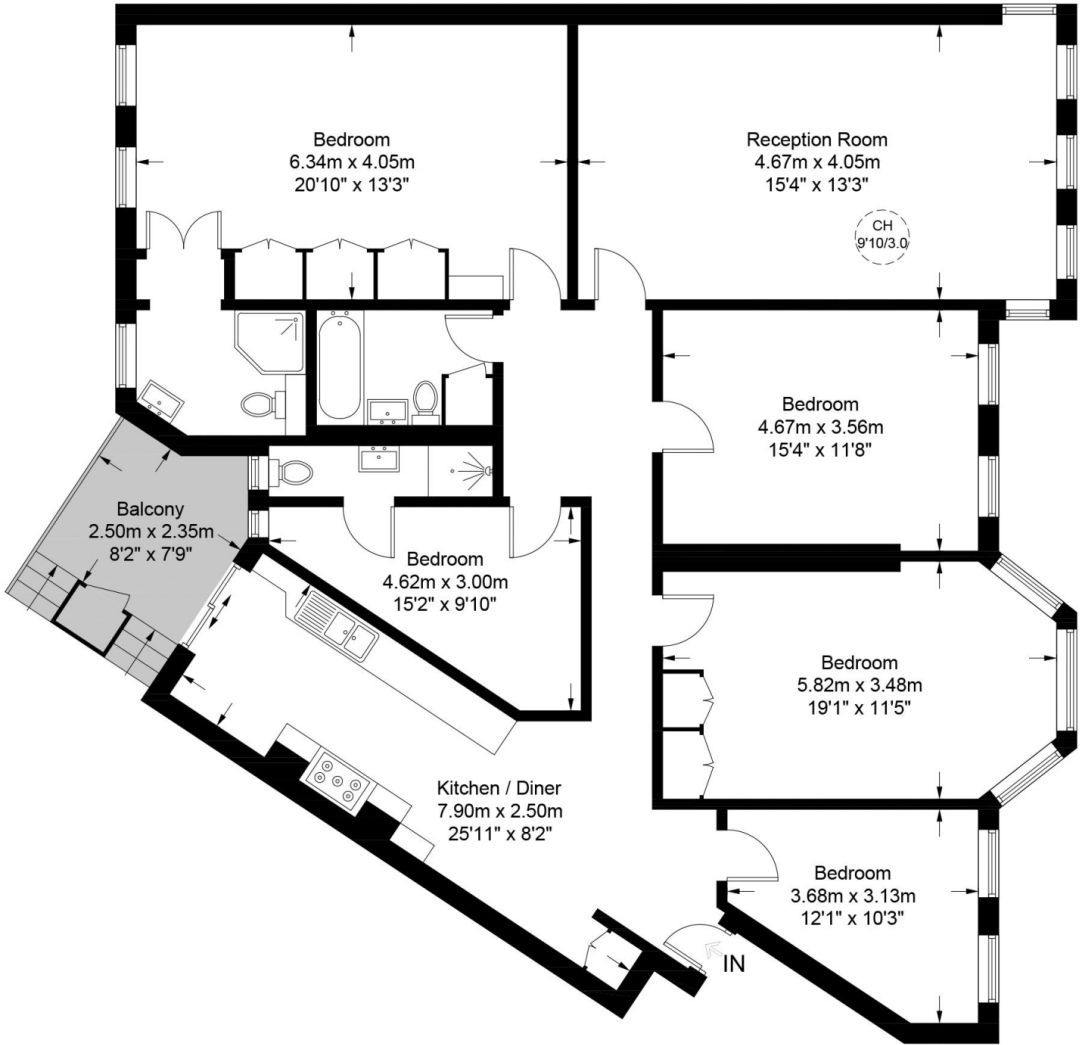
Scan for out video walkthrough



Sterling Mansions, NW6



Approximate Gross Internal Area = 1726 sq ft / 160.4 sq m



Second Floor

This plan is for layout guidance only. Not drawn to scale unless stated. Windows and door openings are approximate. Whilst every care is taken in the preparation of this plan, please check all dimensions, shapes and compass bearings before making any decisions reliant upon them. (ID728433)

Particulars

Property

Canfield Gardens, South Hampstead, London NW6
£1,500,000

Rooms

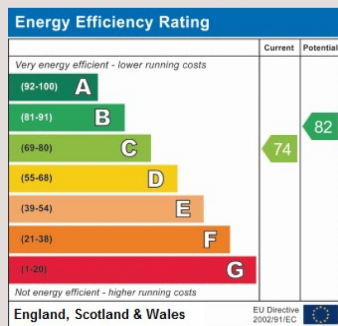
-  1
-  3
-  5+

Features

- Over 1700 SQFT
- Lateral Apartment
- High Ceilings
- Outside Space

Information

Council Tax



Oliver Kent

oliver.kent@vitaproperties.uk
+4477 7274 0351



Scan for our website





T: +4420 7759 2199

E: enquiries@vitaproperties.uk

Disclaimer: These particulars are prepared as a general guide for prospective purchasers or tenants and do not constitute, nor constitute part of, an offer or contract. All statements, descriptions, and measurements contained herein are given in good faith and are believed to be correct at the time of printing, but any intending purchaser or tenant should not rely on them as statements or representations of fact and must satisfy themselves by inspection or otherwise as to their correctness. Floor plans and photographs are for illustrative purposes only and may not be to scale. The position and size of doors, windows, appliances, and other features are approximate. Anti-Money Laundering (AML): In line with the Money Laundering, Terrorist Financing and Transfer of Funds Regulations 2017, we are required to carry out customer due diligence checks. Buyers/tenants will be asked to provide proof of identity, address, and source of funds before a sale or rental can be agreed. Data Protection (GDPR): Personal information supplied to Vita Properties will be processed in accordance with the General Data Protection Regulation (GDPR). Your details may be retained for legitimate business purposes relating to property services. Full details of our Privacy Policy are available on request.

All rights reserved.