



Boydell Court

ST. JOHNS WOOD PARK, LONDON, NW8

£2,475



This impressive five bed, five bath apartment has a lot to offer. Set within the prime NW8 postcode, this penthouse apartment offers a very generous five bedrooms; three of which having access to their own en-suite. Large kitchen, fully fitted with Bosch appliances and connecting breakfast room, separate dining room, large bright reception and spiraling staircase to upstairs.

Decorated to an extremely high standard with bespoke interior design including a German kitchen with Italian stone work-surfaces, wooden floors to bedrooms, large fitted wardrobes, beautiful white matte tiles in the kitchen and living areas and fully tiled bathrooms with multi-jet power showers.

Set within a gated community you will also benefit from a dedicated 24-hour porterage, alarm and video entry, as well as the added benefit of lockers, garages and parking space available for rent via a separate negotiation.





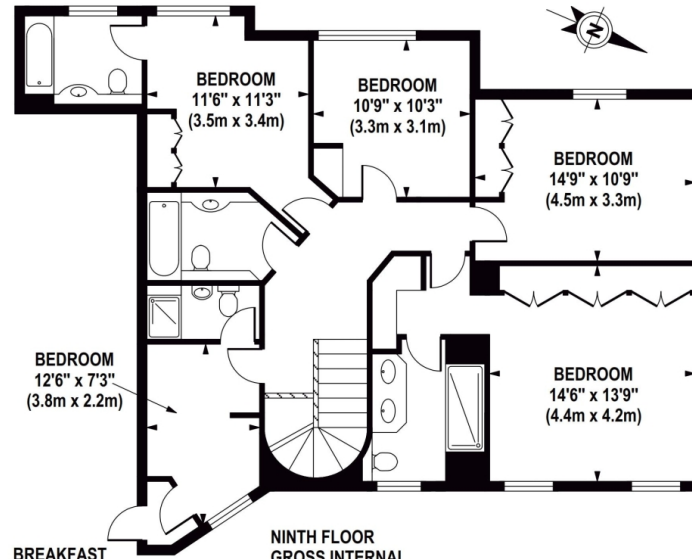




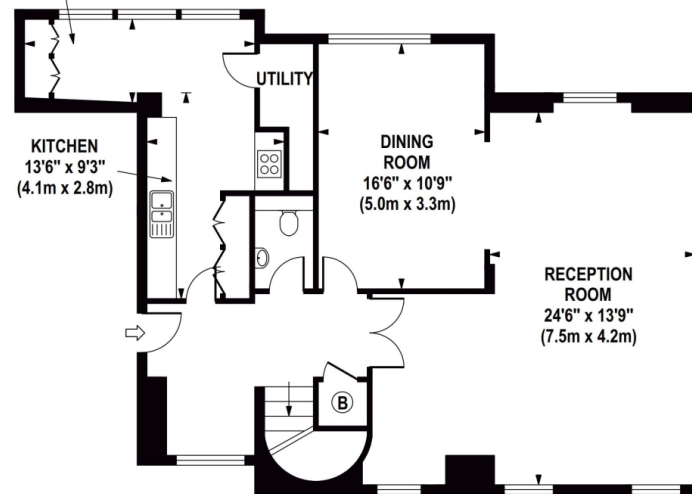


BOYDELL COURT

Approximate Gross Internal Area 2164 sq ft / 201.0 sq m



NINTH FLOOR
GROSS INTERNAL
FLOOR AREA 1106 SQ FT



EIGHTH FLOOR
GROSS INTERNAL
FLOOR AREA 1058 SQ FT

Although every attempt has been made to ensure accuracy, all measurements are approximate. The floor plan's for illustrative purposes only and not to scale. Measured in accordance to RICS standards. DE-PHOTOGRAPHY.NET

Particulars

Property

Boydell Court, St. Johns Wood Park, London, NW8
£2,475

Rooms

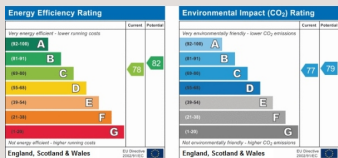
-  1
-  4
-  5+

Features

- Penthouse Apartment
- Separate Maids Entrance
- Bespoke Interior Design
- German Kitchen with Stone Italian Worktops

Information

Council Tax

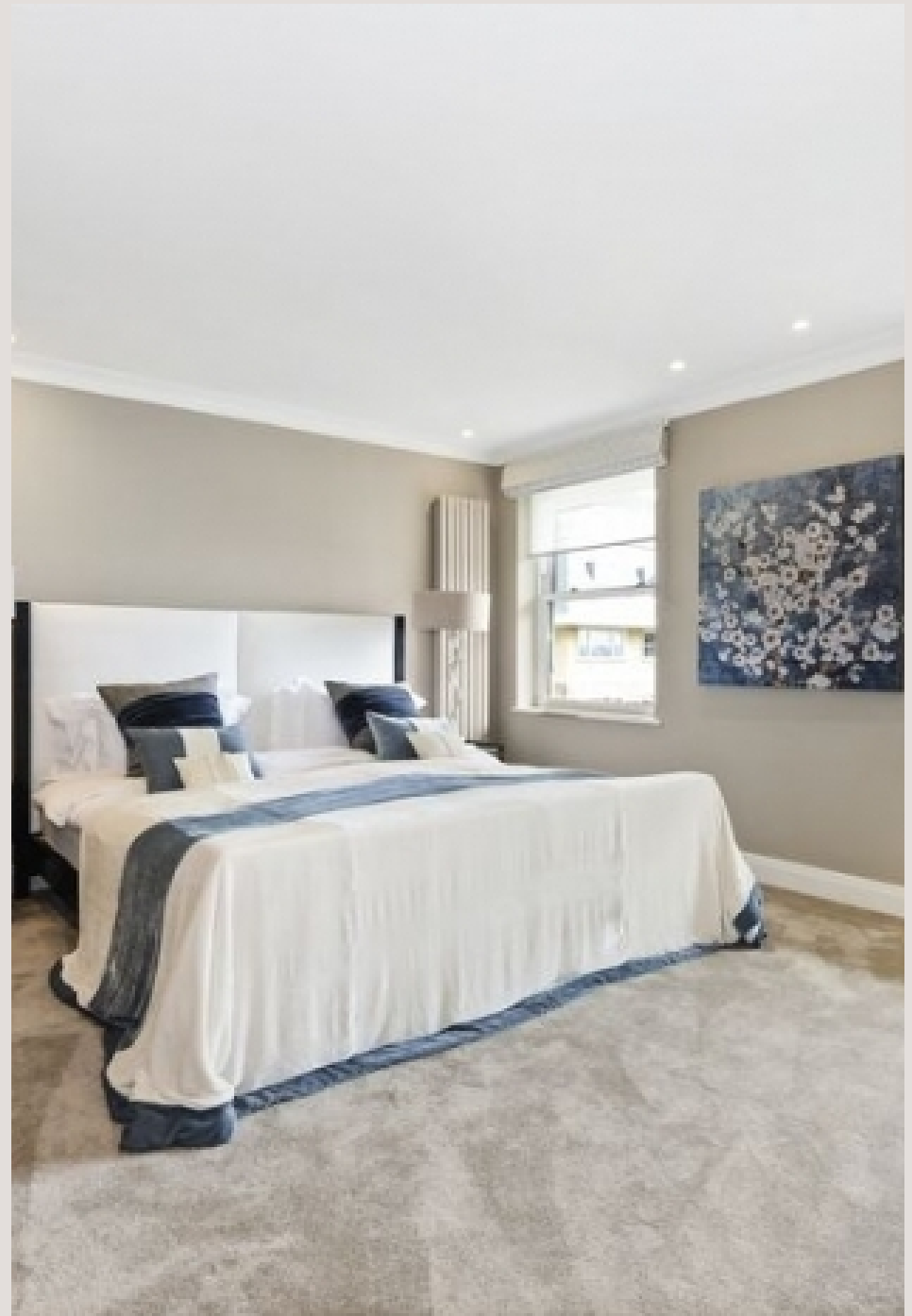


Oliver Kent

oliver.kent@vitaproperties.uk
+4477 7274 0351



Scan for our website





T: +4420 7759 2199
E: enquiries@vitaproperties.uk

Disclaimer: These particulars are prepared as a general guide for prospective purchasers or tenants and do not constitute, nor constitute part of, an offer or contract. All statements, descriptions, and measurements contained herein are given in good faith and are believed to be correct at the time of printing, but any intending purchaser or tenant should not rely on them as statements or representations of fact and must satisfy themselves by inspection or otherwise as to their correctness. Floor plans and photographs are for illustrative purposes only and may not be to scale. The position and size of doors, windows, appliances, and other features are approximate. Anti-Money Laundering (AML): In line with the Money Laundering, Terrorist Financing and Transfer of Funds Regulations 2017, we are required to carry out customer due diligence checks. Buyers/tenants will be asked to provide proof of identity, address, and source of funds before a sale or rental can be agreed. Data Protection (GDPR): Personal information supplied to Vita Properties will be processed in accordance with the General Data Protection Regulation (GDPR). Your details may be retained for legitimate business purposes relating to property services. Full details of our Privacy Policy are available on request.

All rights reserved.