



## Boydell Court

ST. JOHNS WOOD PARK, LONDON, NW8

£1,200



- 3 bedrooms, 3 bathrooms, 1 reception
- Eighth floor penthouse
- Brand newly refurbished
- 1,118 sq. ft.
- Furnished



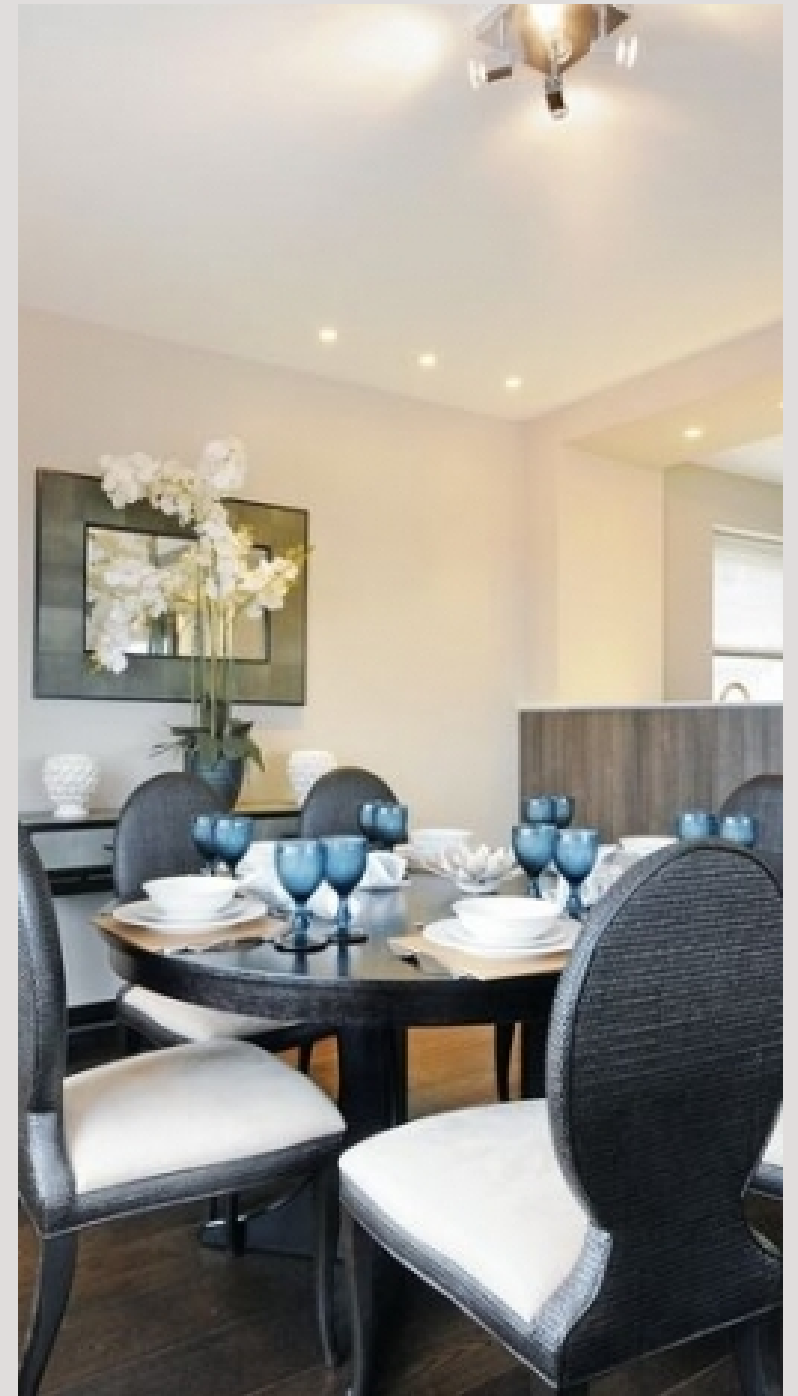


- Fully air conditioned · Bespoke interior design · Smoke alarms everywhere · Satellite (ready for sky, sky plus and hotbird) · Double glazed windows · German kitchen with stone Italian worktops · Bosch appliances, separate washer and dryer, full fridge, separate freezer · Spacious master bedroom · Fitted wardrobes · Wooden flooring in the bedrooms · Beautiful white matte tiles in kitchen and in the reception · LED efficient lights · Dimmable switches · Fully tiled bathrooms with multi-jet power showers · Spectacular views · Alarm and video entry-phone · 24 hour portorage within a gated development · Lockers, car parking space and garages available to rent



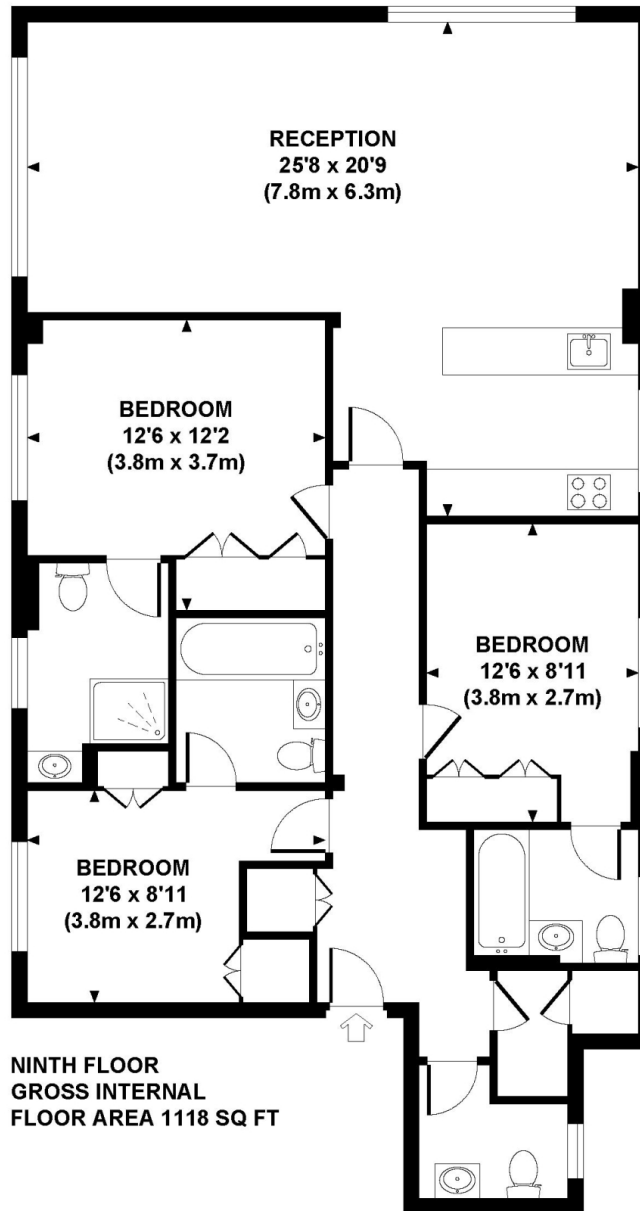






**1008 BOYDELL COURT**

Approximate Gross Internal Area 1118 sq ft / 104 sq m



**NINTH FLOOR  
GROSS INTERNAL  
FLOOR AREA 1118 SQ FT**

Although every attempt has been made to ensure accuracy, all measurements are approximate. The floor plan's for illustrative purposes only and not to scale. Measured in accordance to RICS standards. DE-PHOTOGRAPHY.NET

# Particulars

## Property

Boydell Court, St. Johns Wood Park, London, NW8  
£1,200

## Rooms



1



3



3

## Features

- 3 Bedrooms
- 3 Bathrooms
- Newly Refurbished
- Available Furnished

## Information

Council Tax



Oliver Kent

[oliver.kent@vitaproperties.uk](mailto:oliver.kent@vitaproperties.uk)  
+4477 7274 0351



Scan for our website





T: +4420 7759 2199

E: [enquiries@vitaproperties.uk](mailto:enquiries@vitaproperties.uk)

Disclaimer: These particulars are prepared as a general guide for prospective purchasers or tenants and do not constitute, nor constitute part of, an offer or contract. All statements, descriptions, and measurements contained herein are given in good faith and are believed to be correct at the time of printing, but any intending purchaser or tenant should not rely on them as statements or representations of fact and must satisfy themselves by inspection or otherwise as to their correctness. Floor plans and photographs are for illustrative purposes only and may not be to scale. The position and size of doors, windows, appliances, and other features are approximate. Anti-Money Laundering (AML): In line with the Money Laundering, Terrorist Financing and Transfer of Funds Regulations 2017, we are required to carry out customer due diligence checks. Buyers/tenants will be asked to provide proof of identity, address, and source of funds before a sale or rental can be agreed. Data Protection (GDPR): Personal information supplied to Vita Properties will be processed in accordance with the General Data Protection Regulation (GDPR). Your details may be retained for legitimate business purposes relating to property services. Full details of our Privacy Policy are available on request.

All rights reserved.