



Belsize Road

SOUTH HAMPSTEAD, LONDON NW6

£1,000,000



A swish and modern three bed, three bath, maisonette apartment with its own private entrance, set on a picturesque, tree-lined street on Belsize Road, NW6.

This lovely home offers under-floor heating throughout and comprising of a bright reception room, with dark-wood flooring, large windows and a contemporary feature fireplace. A sleek, fully-integrated kitchen/ diner with soft-close drawers and an abundance of cupboard space. Three pretty evenly sized double bedrooms, with the master boasting a walk-in wardrobe and en-suite shower room. A fully tiled family bathroom, separate WC and finally a fabulous private garden to the rear.

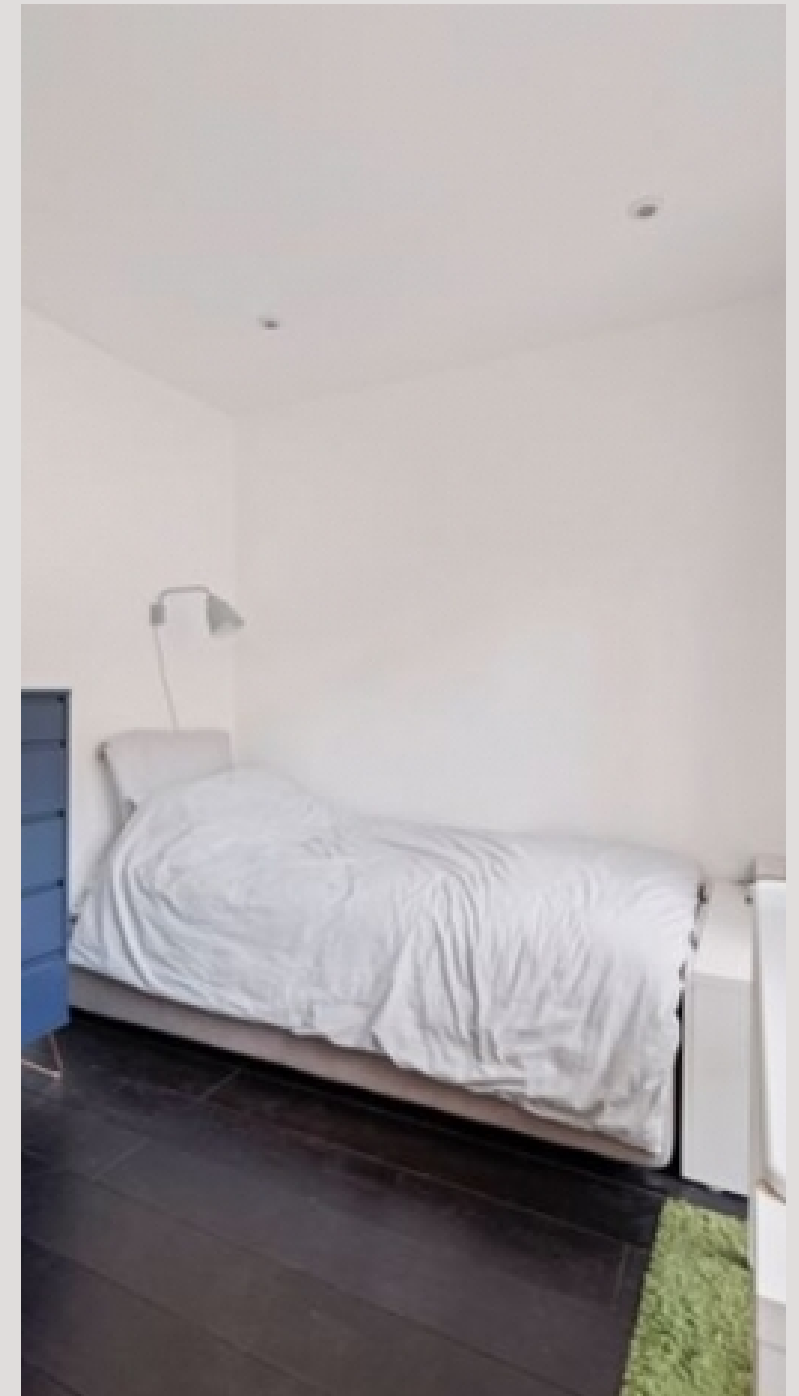
This incredible property is available with a share of freehold and is surrounded by an abundance of quaint boutique shops, café's and restaurants all to be found in Swiss Cottage. Closest transport links inc Finchley Road and Swiss Cottage tube as well as South Hampstead Underground







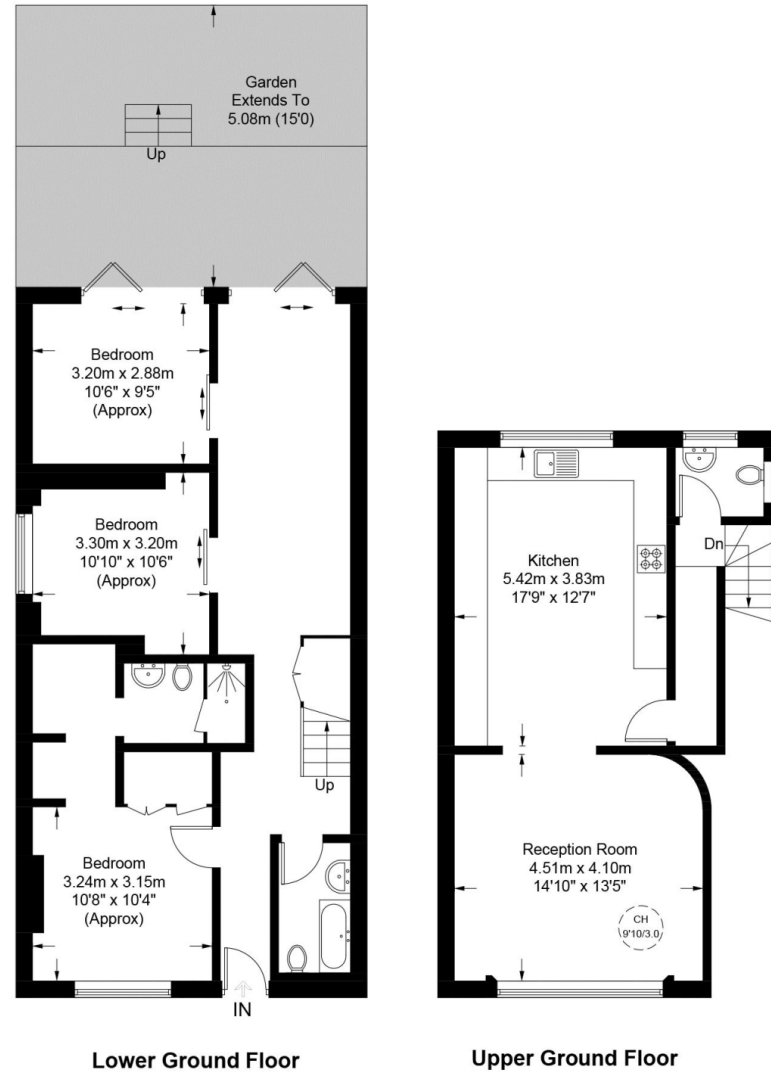






Belsize Road, NW6

Approximate Gross Internal Area = 1274 sq ft / 118.4 sq m



This plan is for layout guidance only. Not drawn to scale unless stated. Windows and door openings are approximate. Whilst every care is taken in the preparation of this plan, please check all dimensions, shapes and compass bearings before making any decisions reliant upon them. (ID730473)

Particulars

Property

Belsize Road, South Hampstead, London NW6
£1,000,000

Rooms



2



3



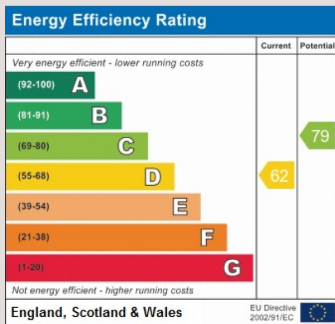
3

Features

- Three Bed, Three Bath
- Duplex Flat
- Beautifully Presented
- Private Entrance

Information

Council Tax



Oliver Kent

oliver.kent@vitaproperties.uk
+4477 7274 0351



Scan for our website





T: +4420 7759 2199
E: enquiries@vitaproperties.uk

Disclaimer: These particulars are prepared as a general guide for prospective purchasers or tenants and do not constitute, nor constitute part of, an offer or contract. All statements, descriptions, and measurements contained herein are given in good faith and are believed to be correct at the time of printing, but any intending purchaser or tenant should not rely on them as statements or representations of fact and must satisfy themselves by inspection or otherwise as to their correctness. Floor plans and photographs are for illustrative purposes only and may not be to scale. The position and size of doors, windows, appliances, and other features are approximate. Anti-Money Laundering (AML): In line with the Money Laundering, Terrorist Financing and Transfer of Funds Regulations 2017, we are required to carry out customer due diligence checks. Buyers/tenants will be asked to provide proof of identity, address, and source of funds before a sale or rental can be agreed. Data Protection (GDPR): Personal information supplied to Vita Properties will be processed in accordance with the General Data Protection Regulation (GDPR). Your details may be retained for legitimate business purposes relating to property services. Full details of our Privacy Policy are available on request.

All rights reserved.