



Clive Court

MAIDA VALE, LONDON W9

£995



A sleek and sophisticated 3/4 bed, 3 bath apartment, set on the fourth floor (with lift access) of this lovely red brick mansion block, in W9.

This delightful property has been recently refurbished with the greatest care and attention to detail. Comprising of an exceptionally large reception room with dining area, original feature fireplace and partition doors leading through to a large study. A sleek kitchen with integrated appliances and abundance of counter/ cupboard space, A huge master bedroom with three-piece ensuite bathroom, second double bedroom, third small-double bedroom and two separate, fully-tiled shower rooms. This property is offered inclusive of brand new, top-quality furnishings and boasts spot lighting throughout, gorgeous hardwood flooring to common areas and plush grey carpets to the bedrooms, as well as boasting an wealth of useful storage space.

Found in the heart of Maida Vale there is a great selection of local shops, bars and restaurants right on your doorsteps and fantastic transport links via Maida Vale & Warwick Avenue Station (Bakerloo Line).





A sleek and sophisticated 3/4 bed, 3 bath apartment, set on the fourth floor (with lift access) of this lovely red brick mansion block, in W9.

This delightful property has been recently refurbished with the greatest care and attention to detail. Comprising of an exceptionally large reception room with dining area, original feature fireplace and partition doors leading through to a large study. A sleek kitchen with integrated appliances and abundance of counter/ cupboard space, A huge master bedroom with three-piece en-suite bathroom, second double bedroom, third small-double bedroom and two separate, fully-tiled shower rooms. This property is offered inclusive of brand new, top-quality furnishings and boasts spot lighting throughout, gorgeous hardwood flooring to common areas and plush grey carpets to the bedrooms, as well as boasting an wealth of useful storage space.



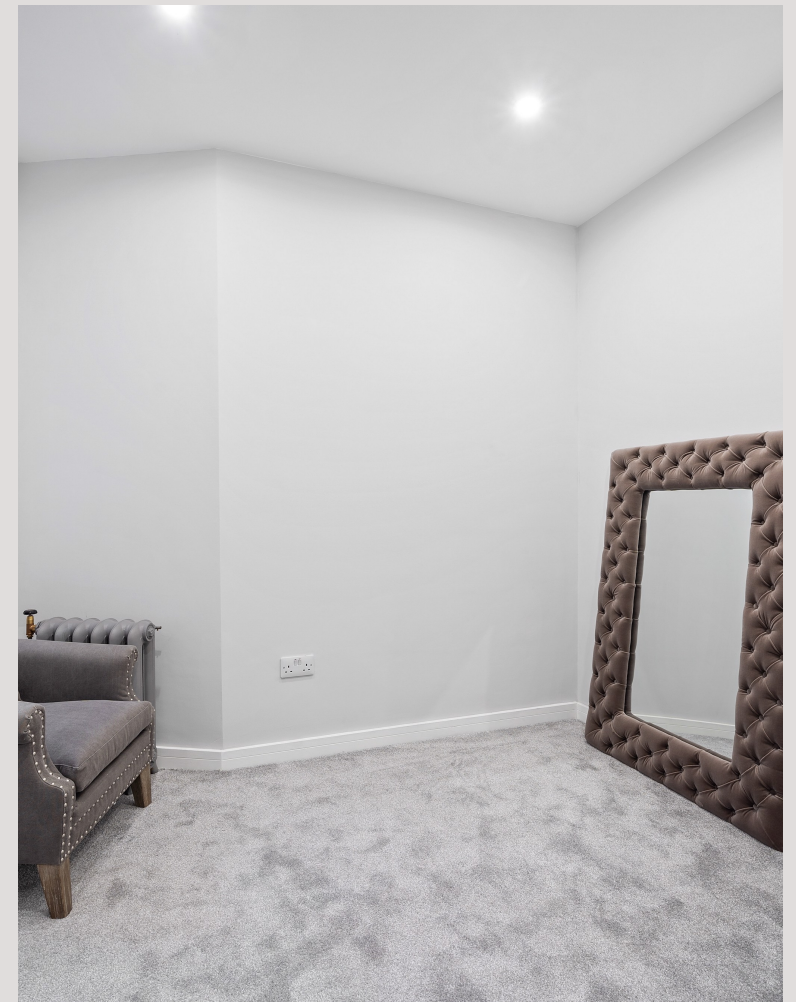
Found in the heart of Maida Vale there is a great selection of local shops, bars and restaurants right on your doorsteps and fantastic transport links via Maida Vale & Warwick Avenue Station (Bakerloo Line).





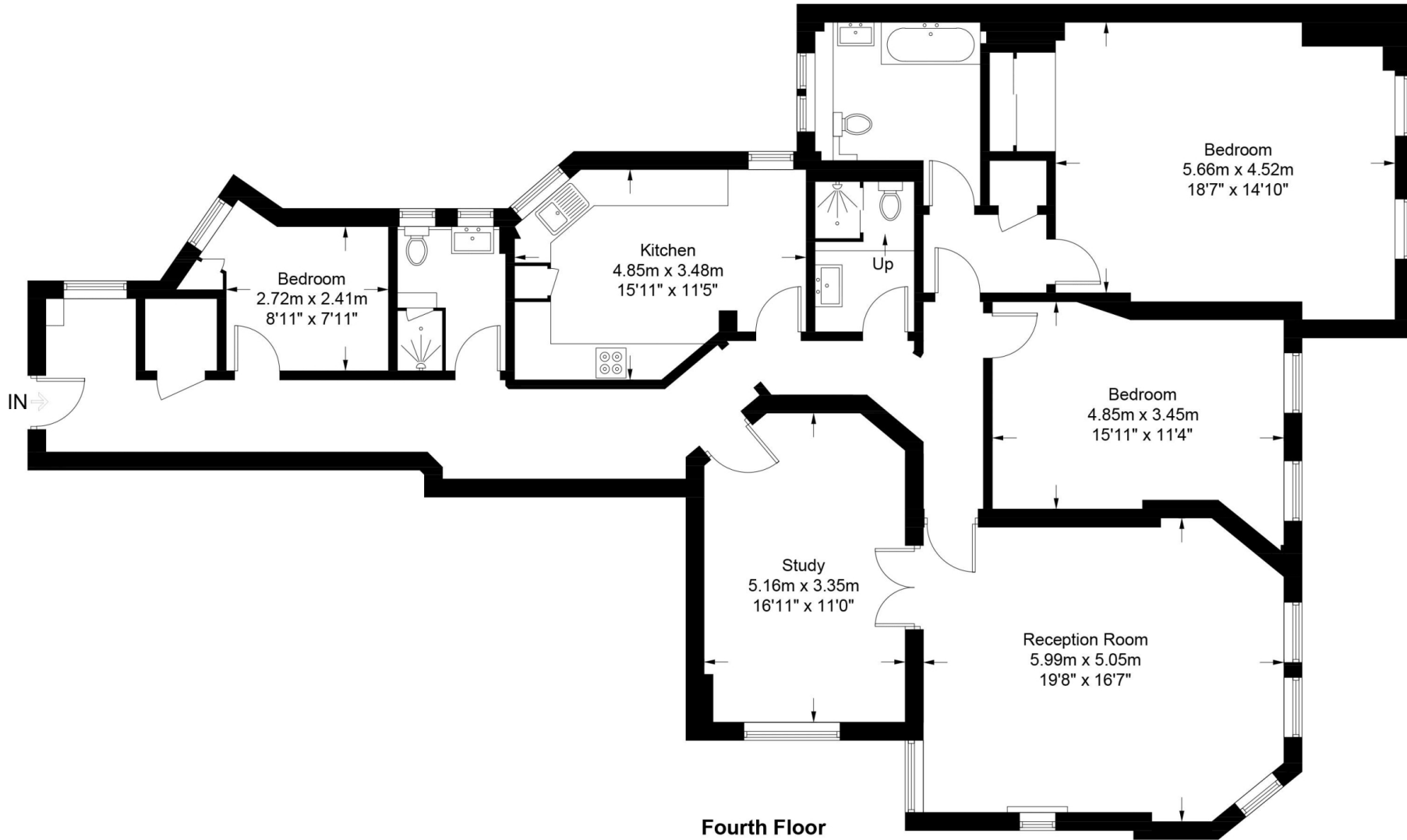


Scan for out video walkthrough



Clive Court, W9

Approximate Gross Internal Area = 1816 sq ft / 168.7 sq m



This plan is for layout guidance only. Not drawn to scale unless stated. Windows and door openings are approximate. Whilst every care is taken in the preparation of this plan, please check all dimensions, shapes and compass bearings before making any decisions reliant upon them. (ID726411)

Particulars

Property

Clive Court, Maida Vale, London W9
£995

Rooms



1



3



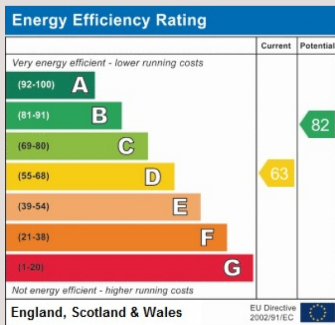
4

Features

- Three Bed, Three Bath
- 4th Floor with Lift Access
- Newly Refurbished
- Tasteful Furnishing

Information

Council Tax



Oliver Kent

oliver.kent@vitaproperties.uk
+4477 7274 0351



Scan for our website





T: +4420 7759 2199

E: enquiries@vitaproperties.uk

Disclaimer: These particulars are prepared as a general guide for prospective purchasers or tenants and do not constitute, nor constitute part of, an offer or contract. All statements, descriptions, and measurements contained herein are given in good faith and are believed to be correct at the time of printing, but any intending purchaser or tenant should not rely on them as statements or representations of fact and must satisfy themselves by inspection or otherwise as to their correctness. Floor plans and photographs are for illustrative purposes only and may not be to scale. The position and size of doors, windows, appliances, and other features are approximate. Anti-Money Laundering (AML): In line with the Money Laundering, Terrorist Financing and Transfer of Funds Regulations 2017, we are required to carry out customer due diligence checks. Buyers/tenants will be asked to provide proof of identity, address, and source of funds before a sale or rental can be agreed. Data Protection (GDPR): Personal information supplied to Vita Properties will be processed in accordance with the General Data Protection Regulation (GDPR). Your details may be retained for legitimate business purposes relating to property services. Full details of our Privacy Policy are available on request.

All rights reserved.