



Crossfield Road
BELSIZE PARK, LONDON NW3

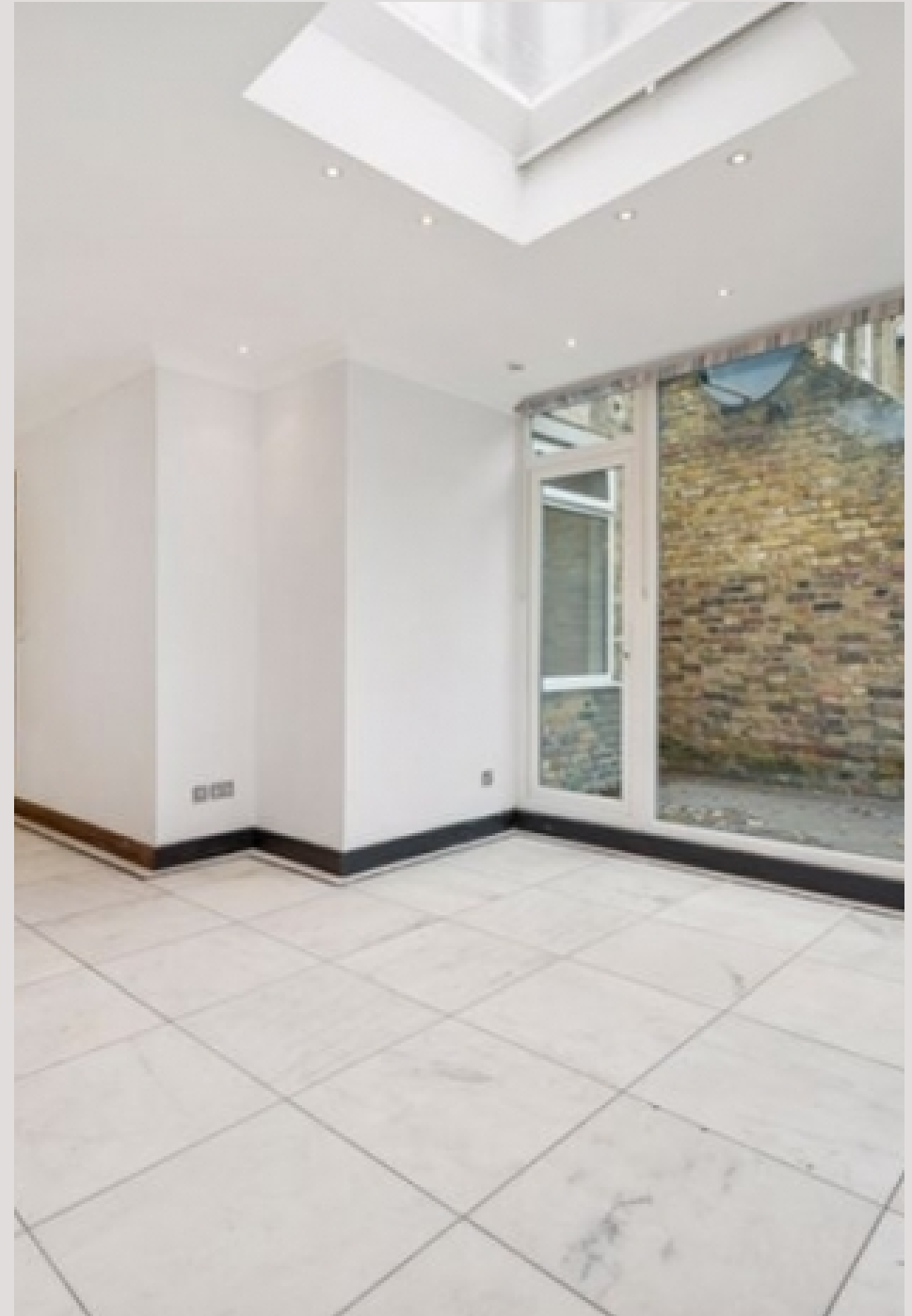
£850,000



Located on an attractive residential street, nestled in the peaceful Belsize Park area, conveniently located for Swiss Cottage Station (Jubilee Line) and Belsize Park Station (Northern Line) is this well-presented 2 bedroom garden flat.

Comprising of a double-aspect reception & dining room, with light-flooding feature skylight and marble-effect floor. A fully-integrated, modern kitchen, Two double bedrooms, a stylish dark-wood family bathroom and separate WC. Boasting a fabulous garden, with an abundance of mixed green and terrace space and finally a fully wired, mixed-used outhouse.

On your doorstep you have an abundance of necessary amenities, as well as boutique shops and Cafe's, in the fantastic and full of character, Belsize Park, NW3.





Located on an attractive residential street, nestled in the peaceful Belsize Park area, conveniently located for Swiss Cottage Station (Jubilee Line) and Belsize Park Station (Northern Line) is this well-presented 2 bedroom garden flat.

Comprising of a double-aspect reception & dining room, with light-flooding feature skylight and marble-effect floor. A fully-integrated, modern kitchen, Two double bedrooms, a stylish dark-wood family bathroom and separate WC. Boasting a fabulous garden, with an abundance of mixed green and terrace space and finally a fully wired, mixed-used outhouse.

On your doorstep you have an abundance of necessary amenities, as well as boutique shops and Cafe's, in the fantastic and full of character, Belsize Park, NW3.











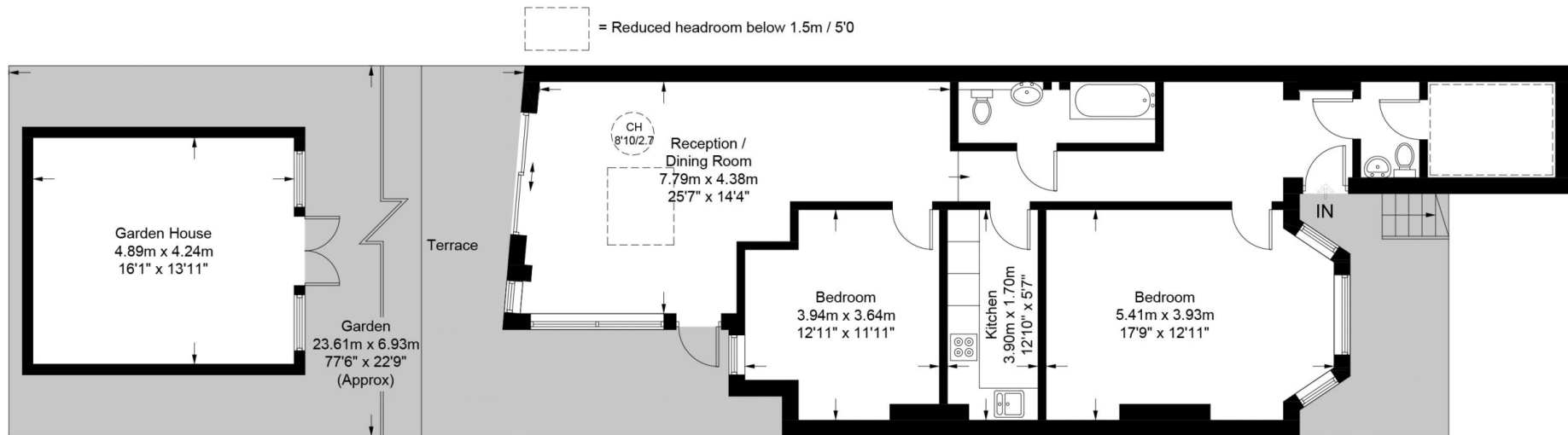
Crossfield Road, NW3

Approximate Gross Internal Area = 957 sq ft / 88.9 sq m
(Excluding Reduce Headroom)

Garden House = 224 sq ft / 20.8 sq m

Reduce Headroom = 46 sq ft / 4.3 sq m

Total = 1227 sq ft / 114 sq m



Lower Ground Floor

This plan is for layout guidance only. Not drawn to scale unless stated. Windows and door openings are approximate. Whilst every care is taken in the preparation of this plan, please check all dimensions, shapes and compass bearings before making any decisions reliant upon them. (ID713879)

Particulars

Property

Crossfield Road, Belsize Park, London NW3
£850,000

Rooms



1



1



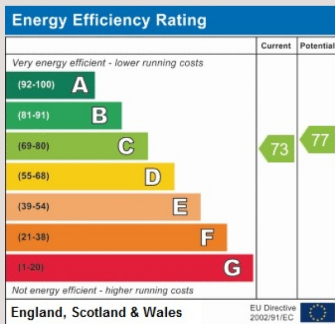
2

Features

- Garden Flat
- Wired Outhouse
- Full of Character
- Beautifully Presented

Information

Council Tax



Oliver Kent

oliver.kent@vitaproperties.uk
+4477 7274 0351



Scan for our website





T: +4420 7759 2199
E: enquiries@vitaproperties.uk

Disclaimer: These particulars are prepared as a general guide for prospective purchasers or tenants and do not constitute, nor constitute part of, an offer or contract. All statements, descriptions, and measurements contained herein are given in good faith and are believed to be correct at the time of printing, but any intending purchaser or tenant should not rely on them as statements or representations of fact and must satisfy themselves by inspection or otherwise as to their correctness. Floor plans and photographs are for illustrative purposes only and may not be to scale. The position and size of doors, windows, appliances, and other features are approximate. Anti-Money Laundering (AML): In line with the Money Laundering, Terrorist Financing and Transfer of Funds Regulations 2017, we are required to carry out customer due diligence checks. Buyers/tenants will be asked to provide proof of identity, address, and source of funds before a sale or rental can be agreed. Data Protection (GDPR): Personal information supplied to Vita Properties will be processed in accordance with the General Data Protection Regulation (GDPR). Your details may be retained for legitimate business purposes relating to property services. Full details of our Privacy Policy are available on request.

All rights reserved.