



Kirkside Road
BLACKHEATH, LONDON SE3
£550



A beautifully bright and spacious three, double bed house, set on a quaint red-brick street, mere moment away from Westcombe Park Station.

This semi-detached house offer a double aspect living room/ dining room, with original feature fireplace and large, light-flooding window, a large eat-in kitchen with large double sink and modern appliance, including dishwasher. Three double bedrooms, a family bathroom and downstairs shower room. Further benefitting from a private paved garden and garage.

Surrounded by a wealth of excellent schools and nurseries as well as a multitude of shops, bars, restaurants and recreational green spaces.





A beautifully bright and spacious three, double bed house, set on a quaint red-brick street, mere moment away from Westcombe Park Station.

This semi-detached house offer a double aspect living room/ dining room, with original feature fireplace and large, light-flooding window, a large eat-in kitchen with large double sink and modern appliance, including dishwasher. Three double bedrooms, a family bathroom and downstairs shower room. Further benefitting from a private paved garden and garage.

Surrounded by a wealth of excellent schools and nurseries as well as a multitude of shops, bars, restaurants and recreational green spaces.







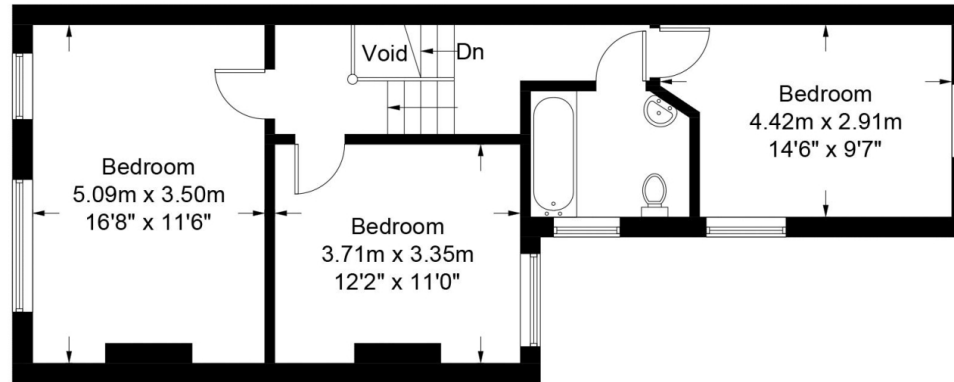
Kirkside Road, SE3

Approximate Gross Internal Area = 1221 sq ft / 113.4 sq m

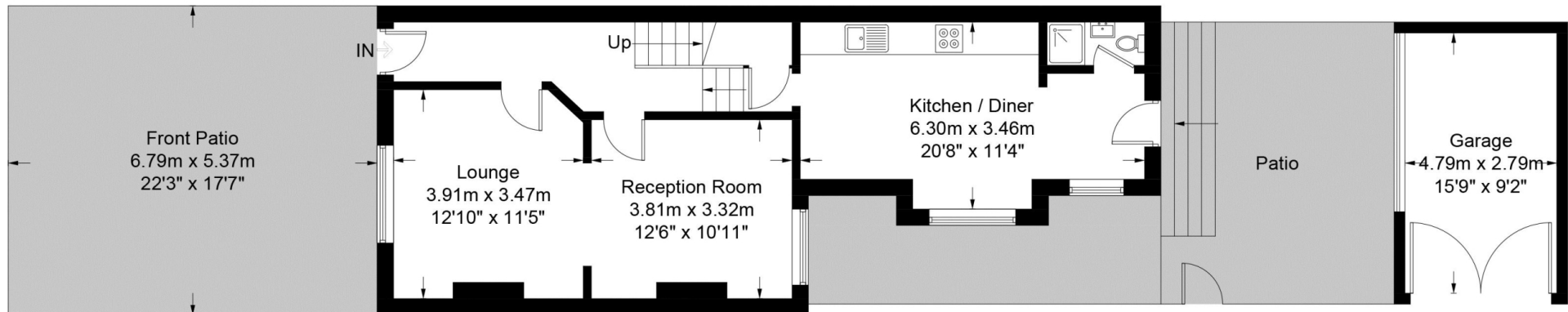
Garage = 144 sq ft / 13.4 sq m

Total = 1365 sq ft / 126.8 sq m

(Excluding Void)



First Floor



Ground Floor

This plan is for layout guidance only. Not drawn to scale unless stated. Windows and door openings are approximate. Whilst every care is taken in the preparation of this plan, please check all dimensions, shapes and compass bearings before making any decisions reliant upon them. (ID703079)

Particulars

Property

Kirkside Road, Blackheath, London SE3
£550

Rooms

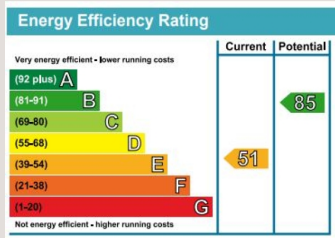


Features

- Available Now!
- Three Double Bedrooms
- Outside Space
- Semi-Detached

Information

Council Tax



Oliver Kent

oliver.kent@vitaproperties.uk
+4477 7274 0351



Scan for our website





T: +4420 7759 2199

E: enquiries@vitaproperties.uk

Disclaimer: These particulars are prepared as a general guide for prospective purchasers or tenants and do not constitute, nor constitute part of, an offer or contract. All statements, descriptions, and measurements contained herein are given in good faith and are believed to be correct at the time of printing, but any intending purchaser or tenant should not rely on them as statements or representations of fact and must satisfy themselves by inspection or otherwise as to their correctness. Floor plans and photographs are for illustrative purposes only and may not be to scale. The position and size of doors, windows, appliances, and other features are approximate. Anti-Money Laundering (AML): In line with the Money Laundering, Terrorist Financing and Transfer of Funds Regulations 2017, we are required to carry out customer due diligence checks. Buyers/tenants will be asked to provide proof of identity, address, and source of funds before a sale or rental can be agreed. Data Protection (GDPR): Personal information supplied to Vita Properties will be processed in accordance with the General Data Protection Regulation (GDPR). Your details may be retained for legitimate business purposes relating to property services. Full details of our Privacy Policy are available on request.

All rights reserved.