



Whittlebury Mews East  
PRIMROSE HILL, LONDON, NW1

£2,100,000



Built approximately 7 years ago, this 3 bedroom contemporary townhouse is in a secure gated development of just four townhouses, each with an allocated underground parking space and private courtyard and located in the heart of Primrose Hill.

This property features a striking atrium style entrance hall and offers spacious and contemporary living.

Whittlebury Mews East is located in Dumpton Place, just off Gloucester Avenue, close to the shops, cafés and restaurants of Regents Park Road and Camden and the open spaces of Primrose Hill and Regents Park.





Built approximately 7 years ago, this 3 bedroom contemporary townhouse is in a secure gated development of just four townhouses, each with an allocated underground parking space and private courtyard and located in the heart of Primrose Hill.

This property features a striking atrium style entrance hall and offers spacious and contemporary living.

Whittlebury Mews East is located in Dumpton Place, just off Gloucester Avenue, close to the shops, cafés and restaurants of Regents Park Road and Camden and the open spaces of Primrose Hill and Regents Park.



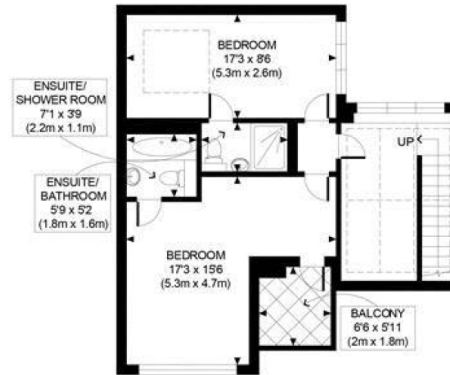






Scan for out video walkthrough





FIRST FLOOR  
GROSS INTERNAL  
FLOOR AREA 568 SQ FT



BASEMENT  
GROSS INTERNAL  
FLOOR AREA 711 SQ FT



GROUND FLOOR  
GROSS INTERNAL  
FLOOR AREA 596 SQ FT

APPROX. GROSS INTERNAL FLOOR AREA 1875 SQ FT / 174 SQM

# Particulars

## Property

Whittlebury Mews East, Primrose Hill, London, NW1  
£2,100,000

## Rooms

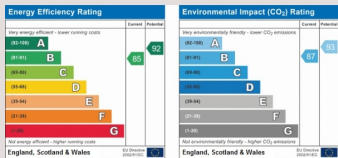


## Features

- Private courtyard
- Allocated parking
- Chain free
- Balcony

## Information

Council Tax



Oliver Kent

oliver.kent@vitaproperties.uk  
+4477 7274 0351



Scan for our website





T: +4420 7759 2199  
E: [enquiries@vitaproperties.uk](mailto:enquiries@vitaproperties.uk)

Disclaimer: These particulars are prepared as a general guide for prospective purchasers or tenants and do not constitute, nor constitute part of, an offer or contract. All statements, descriptions, and measurements contained herein are given in good faith and are believed to be correct at the time of printing, but any intending purchaser or tenant should not rely on them as statements or representations of fact and must satisfy themselves by inspection or otherwise as to their correctness. Floor plans and photographs are for illustrative purposes only and may not be to scale. The position and size of doors, windows, appliances, and other features are approximate. Anti-Money Laundering (AML): In line with the Money Laundering, Terrorist Financing and Transfer of Funds Regulations 2017, we are required to carry out customer due diligence checks. Buyers/tenants will be asked to provide proof of identity, address, and source of funds before a sale or rental can be agreed. Data Protection (GDPR): Personal information supplied to Vita Properties will be processed in accordance with the General Data Protection Regulation (GDPR). Your details may be retained for legitimate business purposes relating to property services. Full details of our Privacy Policy are available on request.

All rights reserved.