



Longfield Avenue  
MILL HILL, LONDON, NW7

£650,000



Perfectly situated in a sought after location is this extended and modern 3 double bedroom property placed on this quiet tree lined residential road.

The property offers: Spacious two reception rooms, modern fitted kitchen, three double bedrooms, tiled bathroom..

Further benefits include: 80ft mature secluded garden, garage and off street parking for a couple of cars and extremely close proximity to schools, cafes and excellent transport links.





Perfectly situated in a sought after location is this extended and modern 3 double bedroom property placed on this quiet tree lined residential road.

The property offers: Spacious two reception rooms, modern fitted kitchen, three double bedrooms, tiled bathroom..

Further benefits include: 80ft mature secluded garden, garage and off street parking for a couple of cars and extremely close proximity to schools, cafes and excellent transport links.









Scan for out video walkthrough





## Longfield Avenue, NW7

Approximate Gross Internal Area = 1193 sq ft / 110.8 sq m

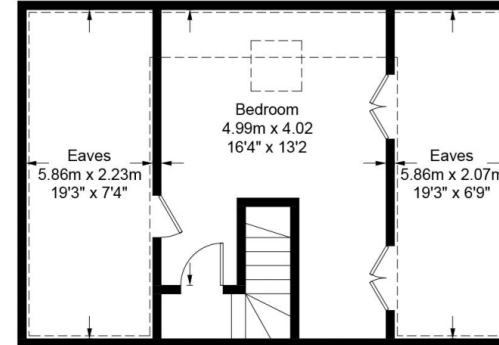
(Excluding Reduced Headroom / Eaves)

Reduced Headroom / Eaves = 310 sq ft / 28.8 sq m

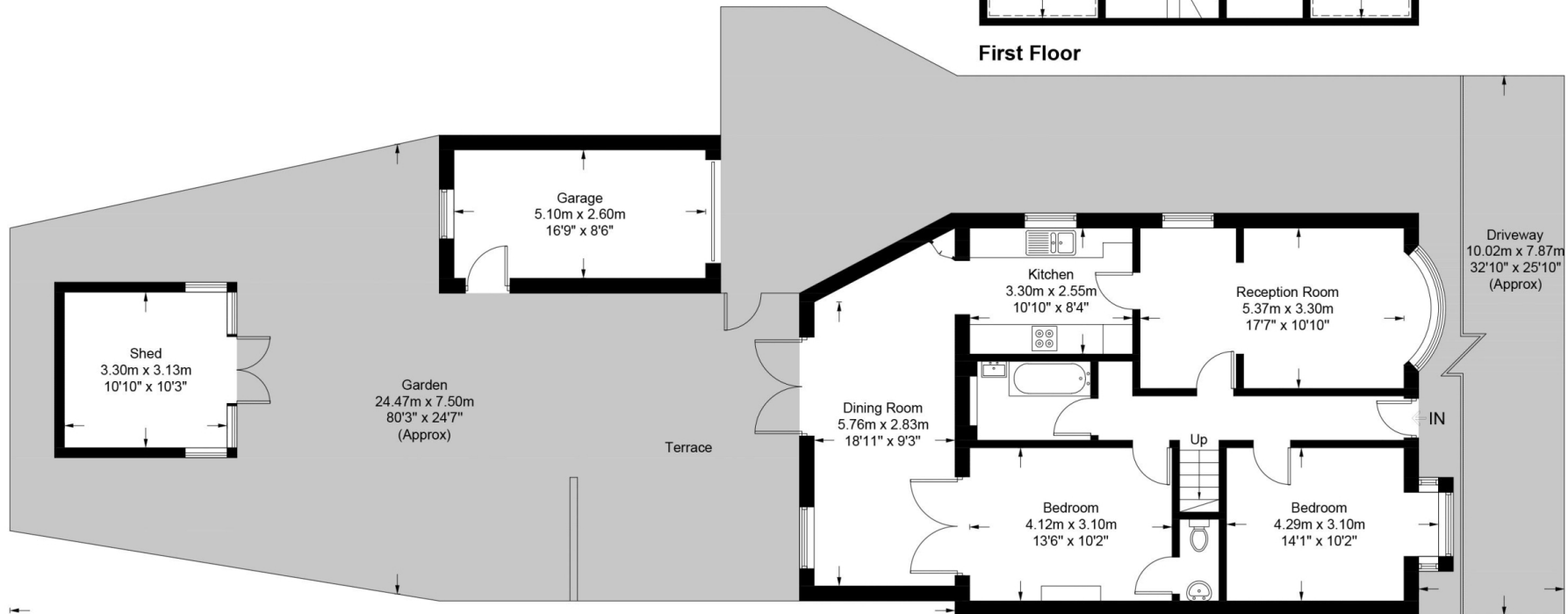
Garage = 144 sq ft / 13.4 sq m

Shed = 112 sq ft / 10.4 sq m

Total = 1759 sq ft / 163.4 sq m



First Floor



Ground Floor

This plan is for layout guidance only. Not drawn to scale unless stated. Windows and door openings are approximate. Whilst every care is taken in the preparation of this plan, please check all dimensions, shapes and compass bearings before making any decisions reliant upon them. (ID659779)

# Particulars

## Property

Longfield Avenue, Mill Hill, London, NW7  
£650,000

## Rooms



2



1



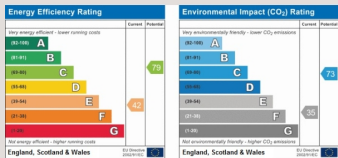
3

## Features

- Chalet Style House
- Three Double Bedrooms
- Two Large Receptions
- Modern Kitchen

## Information

Council Tax



Oliver Kent

oliver.kent@vitaproperties.uk  
+4477 7274 0351



Scan for our website





T: +4420 7759 2199

E: [enquiries@vitaproperties.uk](mailto:enquiries@vitaproperties.uk)

Disclaimer: These particulars are prepared as a general guide for prospective purchasers or tenants and do not constitute, nor constitute part of, an offer or contract. All statements, descriptions, and measurements contained herein are given in good faith and are believed to be correct at the time of printing, but any intending purchaser or tenant should not rely on them as statements or representations of fact and must satisfy themselves by inspection or otherwise as to their correctness. Floor plans and photographs are for illustrative purposes only and may not be to scale. The position and size of doors, windows, appliances, and other features are approximate. Anti-Money Laundering (AML): In line with the Money Laundering, Terrorist Financing and Transfer of Funds Regulations 2017, we are required to carry out customer due diligence checks. Buyers/tenants will be asked to provide proof of identity, address, and source of funds before a sale or rental can be agreed. Data Protection (GDPR): Personal information supplied to Vita Properties will be processed in accordance with the General Data Protection Regulation (GDPR). Your details may be retained for legitimate business purposes relating to property services. Full details of our Privacy Policy are available on request.

All rights reserved.