



Arkwright Road  
HAMPSTEAD, LONDON, NW3

£1,750



AVAILABLE 24TH JUNE - A spectacular 2 bedroom, 2 bathroom apartment (1,415 sqft) with osp located on the raised ground floor of a luxury development in the heart of Hampstead. The property has comfort cooling and offers a modern luxurious living space whilst keeping the historic value of the original building. There is a superb 39'3 open plan kitchen reception room, two bedrooms both with en-suite facilities (one of bedrooms has a dressing room) fitted wardrobes. The nearest tube stations are Finchley Road (Jubilee and Metropolitan lines) 0.4 miles and Hampstead (Northern line) 0.5 miles and there are excellent bus routes into the West End and beyond.





AVAILABLE 24TH JUNE - A spectacular 2 bedroom, 2 bathroom apartment (1,415 sqft) with osp located on the raised ground floor of a luxury development in the heart of Hampstead. The property has comfort cooling and offers a modern luxurious living space whilst keeping the historic value of the original building. There is a superb 39'3 open plan kitchen reception room, two bedrooms both with en-suite facilities (one of bedrooms has a dressing room) fitted wardrobes. The nearest tube stations are Finchley Road (Jubilee and Metropolitan lines) 0.4 miles and Hampstead (Northern line) 0.5 miles and there are excellent bus routes into the West End and beyond.







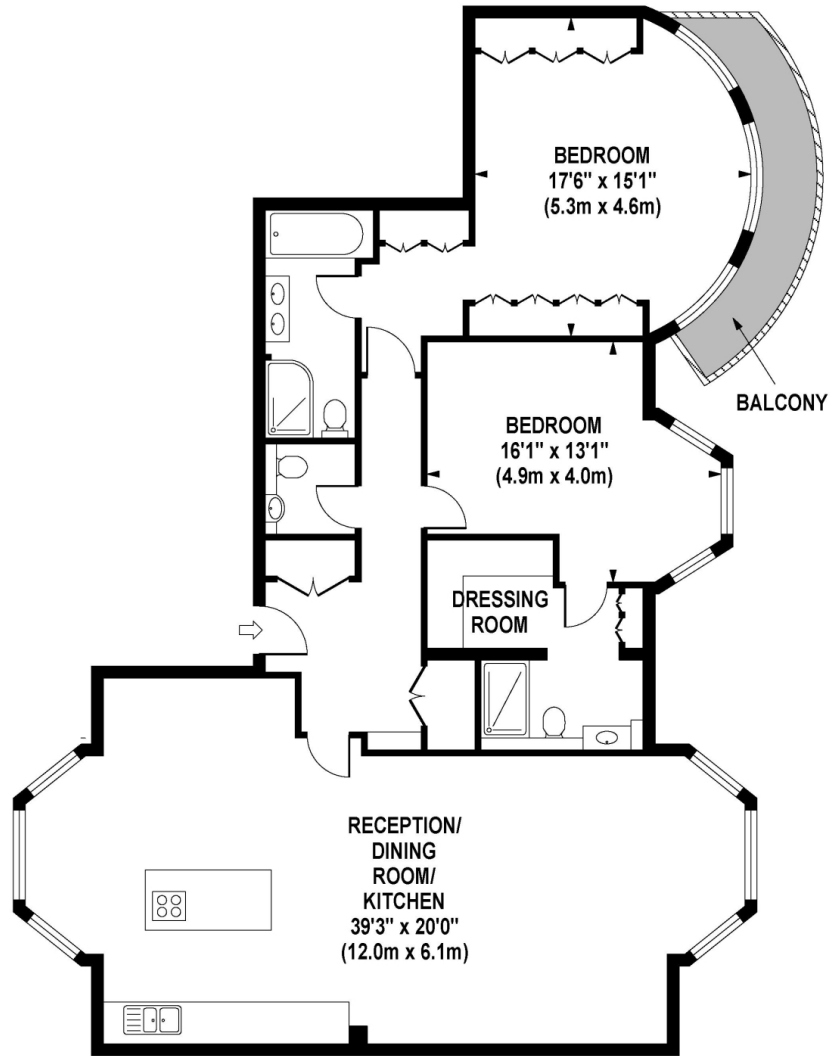


Scan for out video walkthrough



# ARKWRIGHT ROAD

Approximate Gross Internal Area 1415 sq ft / 131.5 sq m



**GROUND FLOOR  
GROSS INTERNAL  
FLOOR AREA 1415 SQ FT**

Although every attempt has been made to ensure accuracy, all measurements are approximate.  
The floor plan's for illustrative purposes only and not to scale. Measured in accordance to RICS standards.

# Particulars

## Property

Arkwright Road, Hampstead, London, NW3  
£1,750

## Rooms

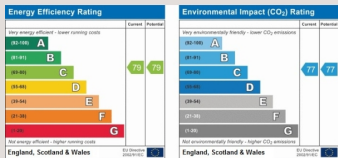


## Features

- Available 24th June 2024
- Managed
- Parking
- Communal Gardens

## Information

Council Tax



Zoe Browne

[zoe.browne@vitaproperties.uk](mailto:zoe.browne@vitaproperties.uk)

+44 7880 277371



Scan for our website





T: +4420 7759 2199

E: [enquiries@vitaproperties.uk](mailto:enquiries@vitaproperties.uk)

Disclaimer: These particulars are prepared as a general guide for prospective purchasers or tenants and do not constitute, nor constitute part of, an offer or contract. All statements, descriptions, and measurements contained herein are given in good faith and are believed to be correct at the time of printing, but any intending purchaser or tenant should not rely on them as statements or representations of fact and must satisfy themselves by inspection or otherwise as to their correctness. Floor plans and photographs are for illustrative purposes only and may not be to scale. The position and size of doors, windows, appliances, and other features are approximate. Anti-Money Laundering (AML): In line with the Money Laundering, Terrorist Financing and Transfer of Funds Regulations 2017, we are required to carry out customer due diligence checks. Buyers/tenants will be asked to provide proof of identity, address, and source of funds before a sale or rental can be agreed. Data Protection (GDPR): Personal information supplied to Vita Properties will be processed in accordance with the General Data Protection Regulation (GDPR). Your details may be retained for legitimate business purposes relating to property services. Full details of our Privacy Policy are available on request.

All rights reserved.