



Sandwell Mansions

WEST END LANE, WEST HAMPSTEAD, LONDON, NW6

£1,250,000



Presenting this superb 3 Bedroom, 2 Reception, 2 Bathroom Apartment on the Ground Floor of an Impressive Mansion Block; Recently refurbished, offering over 1300 sqft of lateral space, combining original features with modern finishes. All the rooms are very large, giving a wonderful sense of space throughout, separate eat in kitchen. Offered with no onward chain and Share of Freehold.

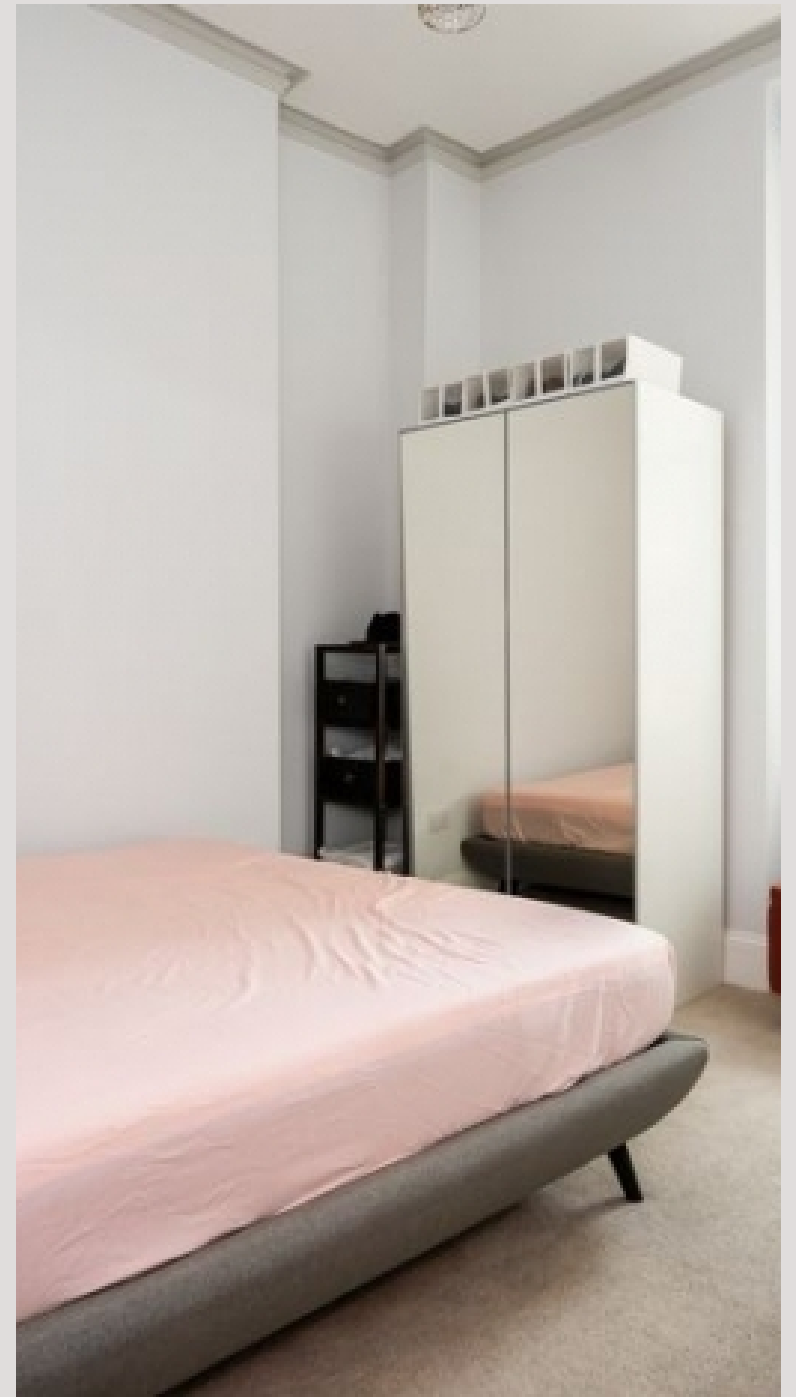
Sandwell Mansions is conveniently located on West End Lane within close proximity of the vast array of local shops and amenities as well as having unrivaled transport links including Thameslink and Underground train lines. Finchley Road, Hampstead and Queens Park are also nearby.







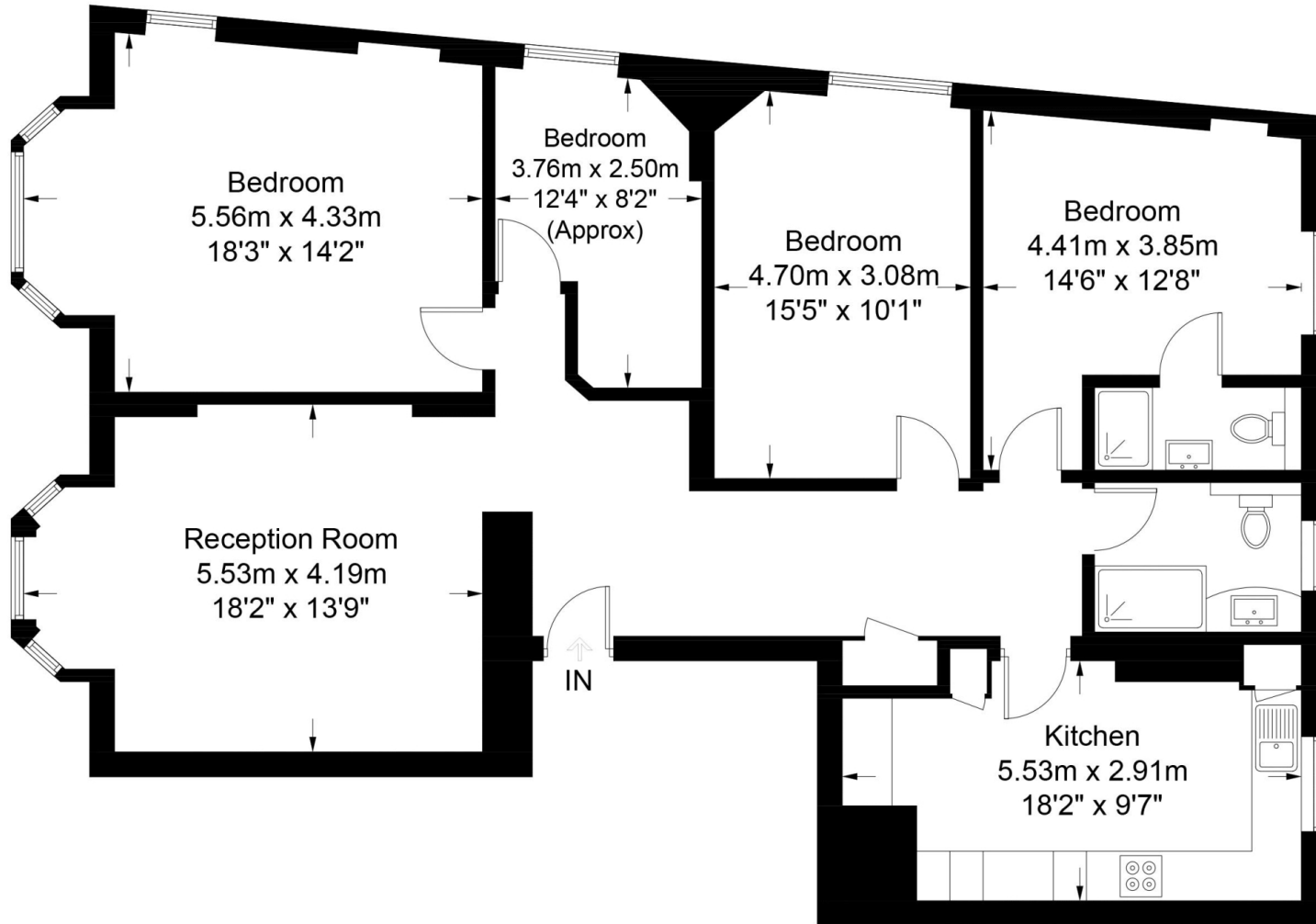




Sandwell Mansions, West End Lane



Approximate Gross Internal Area = 1337 sq ft / 124.2 sq m



Ground Floor

This plan is for layout guidance only. Not drawn to scale unless stated. Windows and door openings are approximate. Whilst every care is taken in the preparation of this plan, please check all dimensions, shapes and compass bearings before making any decisions reliant upon them. (ID571944)

Particulars

Property

Sandwell Mansions, West End Lane, West Hampstead,
£2,250,000V6

Rooms



1



2



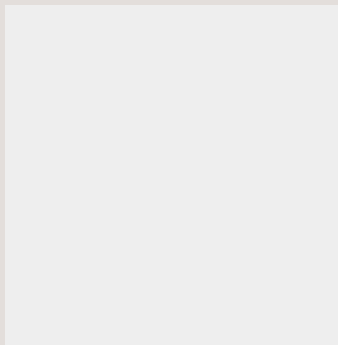
4

Features

- High Ceilings
- 3 minute walk to Tube Station
- Recently Refurbished
- Share of Freehold

Information

Council Tax



Oliver Kent

oliver.kent@vitaproperties.uk
+4477 7274 0351



Scan for our website





T: +4420 7759 2199

E: enquiries@vitaproperties.uk

Disclaimer: These particulars are prepared as a general guide for prospective purchasers or tenants and do not constitute, nor constitute part of, an offer or contract. All statements, descriptions, and measurements contained herein are given in good faith and are believed to be correct at the time of printing, but any intending purchaser or tenant should not rely on them as statements or representations of fact and must satisfy themselves by inspection or otherwise as to their correctness. Floor plans and photographs are for illustrative purposes only and may not be to scale. The position and size of doors, windows, appliances, and other features are approximate. Anti-Money Laundering (AML): In line with the Money Laundering, Terrorist Financing and Transfer of Funds Regulations 2017, we are required to carry out customer due diligence checks. Buyers/tenants will be asked to provide proof of identity, address, and source of funds before a sale or rental can be agreed. Data Protection (GDPR): Personal information supplied to Vita Properties will be processed in accordance with the General Data Protection Regulation (GDPR). Your details may be retained for legitimate business purposes relating to property services. Full details of our Privacy Policy are available on request.

All rights reserved.