



Hamilton Terrace
ST JOHNS WOOD, LONDON, NW8

£24,917



Available Immediately is this wonderful six bedroom family home on one of St John's Wood's most exclusive roads close to the High Street and underground station (Jubilee line).

The accommodation of approx.

3,100 sq ft arranged over three floors, includes a principal bedroom with en-suite bathroom and walk-in wardrobe Five further bedrooms, three further bathrooms (2 en-suite), expansive living room, family room, dining room, open plan kitchen/breakfast room with granite work tops and built in Siemens appliances, utility room and a landscaped garden.

Further benefits include Bose multi room "Lifestyle 48" WRITE TO US hi-fi system, Lutron lighting and air conditioning to main areas





Available Immediately is this wonderful six bedroom family home on one of St John's Wood's most exclusive roads close to the High Street and underground station (Jubilee line).

The accommodation of approx. 3,100 sq ft arranged over three floors, includes a principal bedroom with en-suite bathroom and walk-in wardrobe Five further bedrooms, three further bathrooms (2 en-suite), expansive living room, family room, dining room, open plan kitchen/breakfast room with granite work tops and built in Siemens appliances, utility room and a landscaped garden.

Further benefits include Bose multi room "Lifestyle 48" WRITE TO US hi-fi system, Lutron lighting and air conditioning to main areas

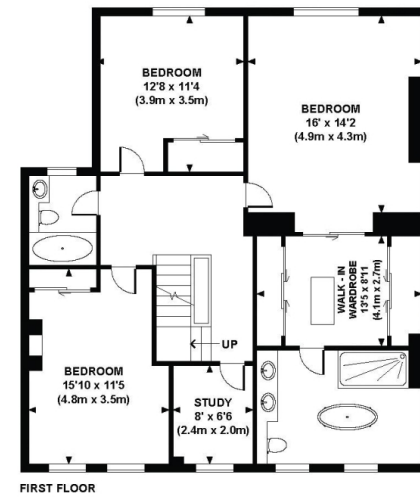
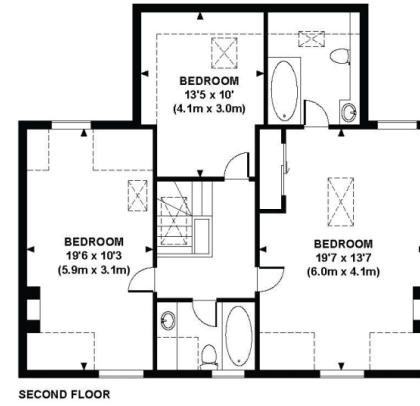
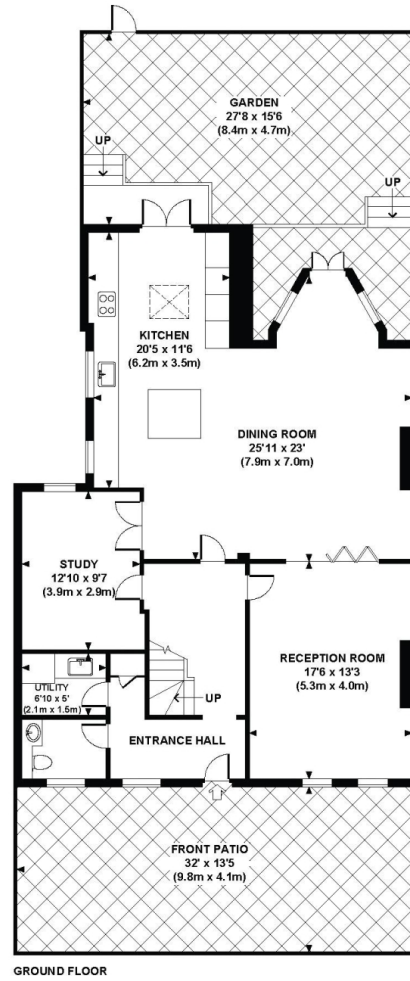








Approx. gross internal area
2969 Sq.Ft. / 275.8 Sq.M.
3087 Sq.Ft. / 286.8 Sq.M. Inc. Restricted Height Area



Particulars

Property

Hamilton Terrace, St Johns Wood, London, NW8
£24,917

Rooms



3



4



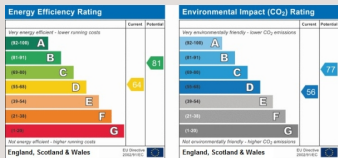
6

Features

- 6 Bedrooms
- 4 Bathrooms
- Kitchen/Family Room
- Detached

Information

Council Tax



Oliver Kent

oliver.kent@vitaproperties.uk
+4477 7274 0351



Scan for our website





T: +4420 7759 2199

E: enquiries@vitaproperties.uk

Disclaimer: These particulars are prepared as a general guide for prospective purchasers or tenants and do not constitute, nor constitute part of, an offer or contract. All statements, descriptions, and measurements contained herein are given in good faith and are believed to be correct at the time of printing, but any intending purchaser or tenant should not rely on them as statements or representations of fact and must satisfy themselves by inspection or otherwise as to their correctness. Floor plans and photographs are for illustrative purposes only and may not be to scale. The position and size of doors, windows, appliances, and other features are approximate. Anti-Money Laundering (AML): In line with the Money Laundering, Terrorist Financing and Transfer of Funds Regulations 2017, we are required to carry out customer due diligence checks. Buyers/tenants will be asked to provide proof of identity, address, and source of funds before a sale or rental can be agreed. Data Protection (GDPR): Personal information supplied to Vita Properties will be processed in accordance with the General Data Protection Regulation (GDPR). Your details may be retained for legitimate business purposes relating to property services. Full details of our Privacy Policy are available on request.

All rights reserved.