



Priory Road

SOUTH HAMPSTEAD, LONDON, NW6

£350



Available Now - Located within moments of West Hampstead and Finchley Road's tube and shops is this larger than average 1 bedroom flat located on the 1st floor of a well maintained period conversion.

The flat benefits a large double bedroom, large reception with wooden floors and a separate fully fitted kitchen.

Offered on a furnished basis.

Early viewings highly recommended, please call 020 7759 2199





Available Now - Located within moments of West Hampstead and Finchley Road's tube and shops is this larger than average 1 bedroom flat located on the 1st floor of a well maintained period conversion.

The flat benefits a large double bedroom, large reception with wooden floors and a separate fully fitted kitchen.

Offered on a furnished basis.

Early viewings highly recommended, please call 020 7759 2199





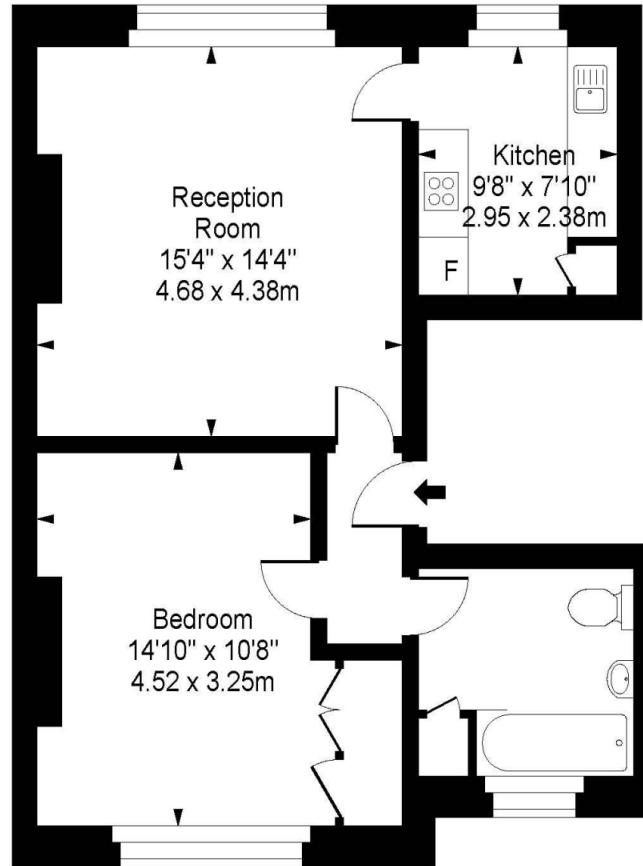
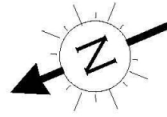




Scan for out video walkthrough



# Priory Road



First Floor

Approx Gross Internal Area **626 Sq Ft - 58.18 Sq M**

For Illustration Purposes Only - Not To Scale  
Floor plan by [www.creativeplanetik.com](http://www.creativeplanetik.com)

# Particulars

## Property

Priory Road, South Hampstead, London, NW6  
£350

## Rooms

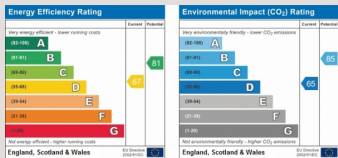


## Features

- Larger than average
- Wooden floors
- Large bedroom
- 1st floor

## Information

Council Tax



Oliver Kent

oliver.kent@vitaproperties.uk  
+4477 7274 0351



Scan for our website





T: +4420 7759 2199  
E: [enquiries@vitaproperties.uk](mailto:enquiries@vitaproperties.uk)

Disclaimer: These particulars are prepared as a general guide for prospective purchasers or tenants and do not constitute, nor constitute part of, an offer or contract. All statements, descriptions, and measurements contained herein are given in good faith and are believed to be correct at the time of printing, but any intending purchaser or tenant should not rely on them as statements or representations of fact and must satisfy themselves by inspection or otherwise as to their correctness. Floor plans and photographs are for illustrative purposes only and may not be to scale. The position and size of doors, windows, appliances, and other features are approximate. Anti-Money Laundering (AML): In line with the Money Laundering, Terrorist Financing and Transfer of Funds Regulations 2017, we are required to carry out customer due diligence checks. Buyers/tenants will be asked to provide proof of identity, address, and source of funds before a sale or rental can be agreed. Data Protection (GDPR): Personal information supplied to Vita Properties will be processed in accordance with the General Data Protection Regulation (GDPR). Your details may be retained for legitimate business purposes relating to property services. Full details of our Privacy Policy are available on request.

All rights reserved.