



Finchley Road
HAMPSTEAD, LONDON, NW3

£725,000



Vita are delighted to offer this stylish apartment situated in a contemporary new built block on Finchley Road, moments from the amenities of Hampstead, West Hampstead and Swiss Cottage O2 Center.

This 2 double bedroom, 2 bathroom property is on the 5th floor (with a lift) benefits from an impressive array of features including designer fitted kitchen, fully fitted appliances, a South West facing reception with wooden floors opening on to spacious private balcony overlooking London landmark views.

The bedrooms boasts plush carpets, down lights and spacious fitted wardrobes, while the bathrooms are beautifully designed with limestone tiling, lacquered and mirrored vanity units. The apartment is part of the JW3 cultural center which offers an abundance of amenities including cinema, restaurant, café and various event and activities for all ages.

Excellent transport links are within walking distance ; Finchley Road Tube Station & Finchley Road Frogna Overground







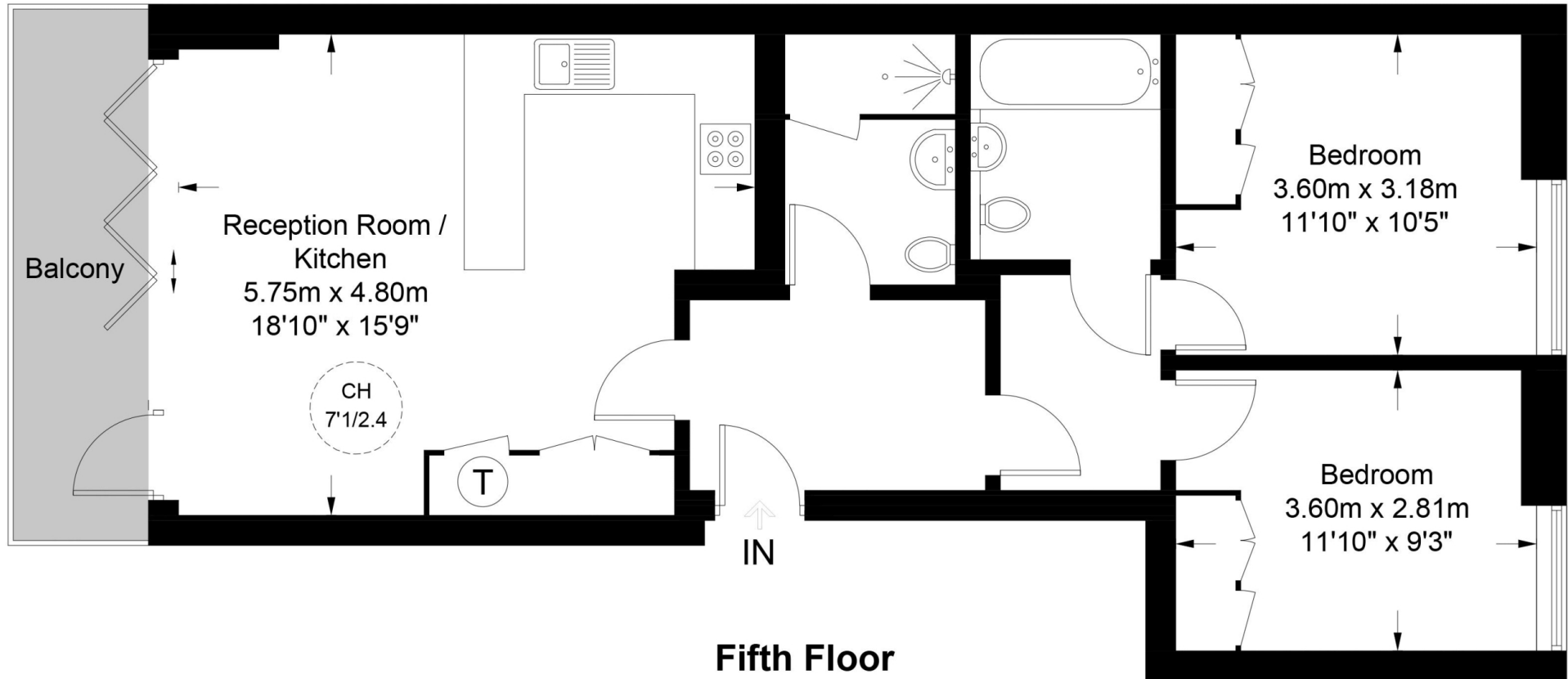




Finchley Road



Approximate Gross Internal Area = 747 sq ft / 69.4 sq m



Fifth Floor

This plan is for layout guidance only. Not drawn to scale unless stated. Windows and door openings are approximate. Whilst every care is taken in the preparation of this plan, please check all dimensions, shapes and compass bearings before making any decisions reliant upon them. (ID626247)

Particulars

Property

Finchley Road, Hampstead, London, NW3
£725,000

Rooms



1



2



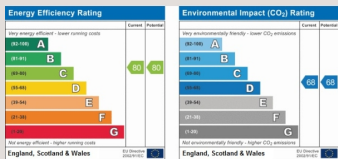
2

Features

- Stunning views across London
- 5th Floor
- Lift
- Moments from Finchley Road Tube Station

Information

Council Tax



Oliver Kent

oliver.kent@vitaproperties.uk
+4477 7274 0351



Scan for our website





T: +4420 7759 2199
E: enquiries@vitaproperties.uk

Disclaimer: These particulars are prepared as a general guide for prospective purchasers or tenants and do not constitute, nor constitute part of, an offer or contract. All statements, descriptions, and measurements contained herein are given in good faith and are believed to be correct at the time of printing, but any intending purchaser or tenant should not rely on them as statements or representations of fact and must satisfy themselves by inspection or otherwise as to their correctness. Floor plans and photographs are for illustrative purposes only and may not be to scale. The position and size of doors, windows, appliances, and other features are approximate. Anti-Money Laundering (AML): In line with the Money Laundering, Terrorist Financing and Transfer of Funds Regulations 2017, we are required to carry out customer due diligence checks. Buyers/tenants will be asked to provide proof of identity, address, and source of funds before a sale or rental can be agreed. Data Protection (GDPR): Personal information supplied to Vita Properties will be processed in accordance with the General Data Protection Regulation (GDPR). Your details may be retained for legitimate business purposes relating to property services. Full details of our Privacy Policy are available on request.

All rights reserved.