



Lyndhurst Road  
HAMPSTEAD, LONDON, NW3

£7,150



AVAILABLE NOW - A fabulous 3 bedroom flat set on the third floor (with lift) in a luxury recently converted period property close to Hampstead High Street. This spacious 1,430 sq ft/ 1132.9 sq m property has been interior designed to a high standard and includes a double reception room that opens onto a south facing balcony. The three bedrooms have en suite bathrooms and there is a separate guest cloakroom.

Features include air conditioning/heating via ducted units in every room, and use of a communal landscaped garden. Hampstead Northern line tube station is 0.5 miles and Finchley Road (Jubilee and Metropolitan lines) is about 0.6 miles.





AVAILABLE NOW - A fabulous 3 bedroom flat set on the third floor (with lift) in a luxury recently converted period property close to Hampstead High Street. This spacious 1,430 sq ft/ 1132.9 sq m property has been interior designed to a high standard and includes a double reception room that opens onto a south facing balcony. The three bedrooms have en suite bathrooms and there is a separate guest cloakroom.

Features include air conditioning/heating via ducted units in every room, and use of a communal landscaped garden. Hampstead Northern line tube station is 0.5 miles and Finchley Road (Jubilee and Metropolitan lines) is about 0.6 miles.



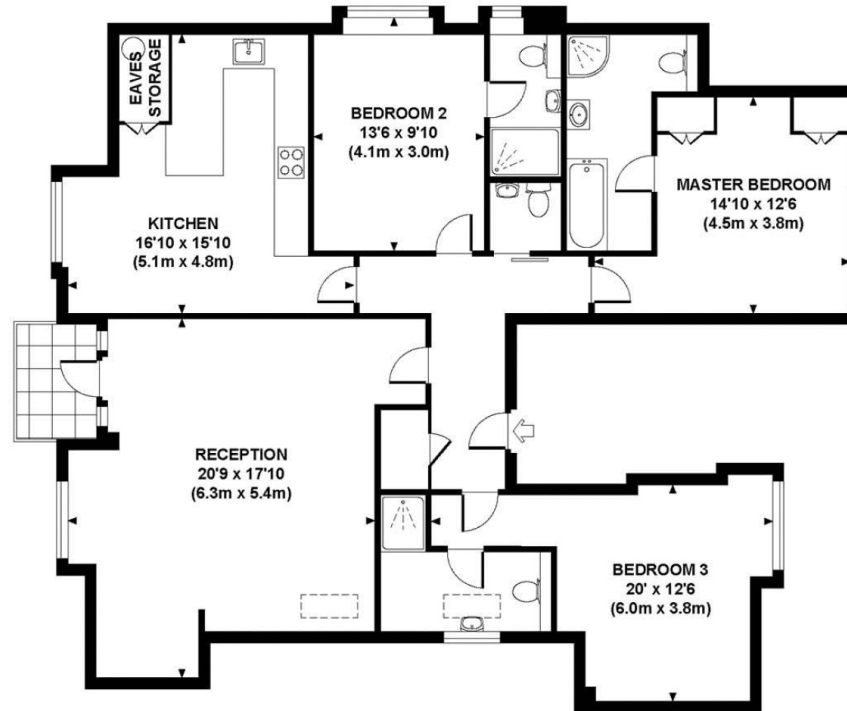






**FLAT F LYNDHURST ROAD, NW3**

Approximate Gross Internal Area 1430 sq ft / 132.9 sq m



**THIRD FLOOR  
GROSS INTERNAL  
FLOOR AREA 1430 SQ FT**

# Particulars

## Property

Lyndhurst Road, Hampstead, London, NW3  
£7,150

## Rooms



1



3



3

## Features

- 20' Reception Room
- Three double bedrooms
- Three bathrooms
- Moments to Hampstead Station

## Information

Council Tax



Oliver Kent

[oliver.kent@vitaproperties.uk](mailto:oliver.kent@vitaproperties.uk)  
+4477 7274 0351



Scan for our website





T: +4420 7759 2199  
E: [enquiries@vitaproperties.uk](mailto:enquiries@vitaproperties.uk)

Disclaimer: These particulars are prepared as a general guide for prospective purchasers or tenants and do not constitute, nor constitute part of, an offer or contract. All statements, descriptions, and measurements contained herein are given in good faith and are believed to be correct at the time of printing, but any intending purchaser or tenant should not rely on them as statements or representations of fact and must satisfy themselves by inspection or otherwise as to their correctness. Floor plans and photographs are for illustrative purposes only and may not be to scale. The position and size of doors, windows, appliances, and other features are approximate. Anti-Money Laundering (AML): In line with the Money Laundering, Terrorist Financing and Transfer of Funds Regulations 2017, we are required to carry out customer due diligence checks. Buyers/tenants will be asked to provide proof of identity, address, and source of funds before a sale or rental can be agreed. Data Protection (GDPR): Personal information supplied to Vita Properties will be processed in accordance with the General Data Protection Regulation (GDPR). Your details may be retained for legitimate business purposes relating to property services. Full details of our Privacy Policy are available on request.

All rights reserved.