



Fellows Road

BELSIZE PARK, LONDON, NW3

£940



A truly stunning split level four bedroom split level property to rent situated on the top two floors of this impressive period property with access to well maintained communal gardens.

Belsize Park is in a highly desirable area in North central London nestled between Primrose Hill and Hampstead. The area benefits from wide open streets and a village type feel but it is extremely well located for easy access to central London. There is an abundance of parks and open spaces with Hampstead Heath and Primrose Hill both being just a short walk away. The areas many tube stops on both the Northern and Jubilee lines provide great access to the City & Canary Wharf.





A truly stunning split level four bedroom split level property to rent situated on the top two floors of this impressive period property with access to well maintained communal gardens.

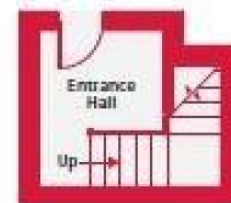
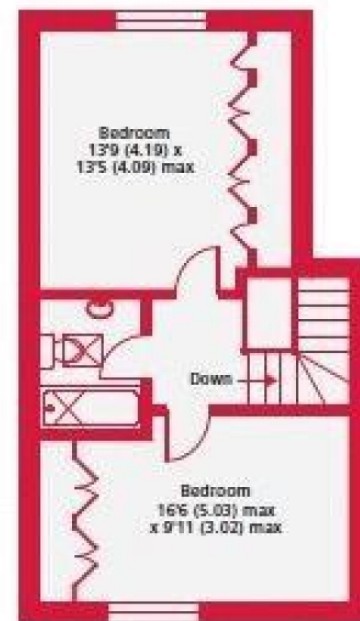
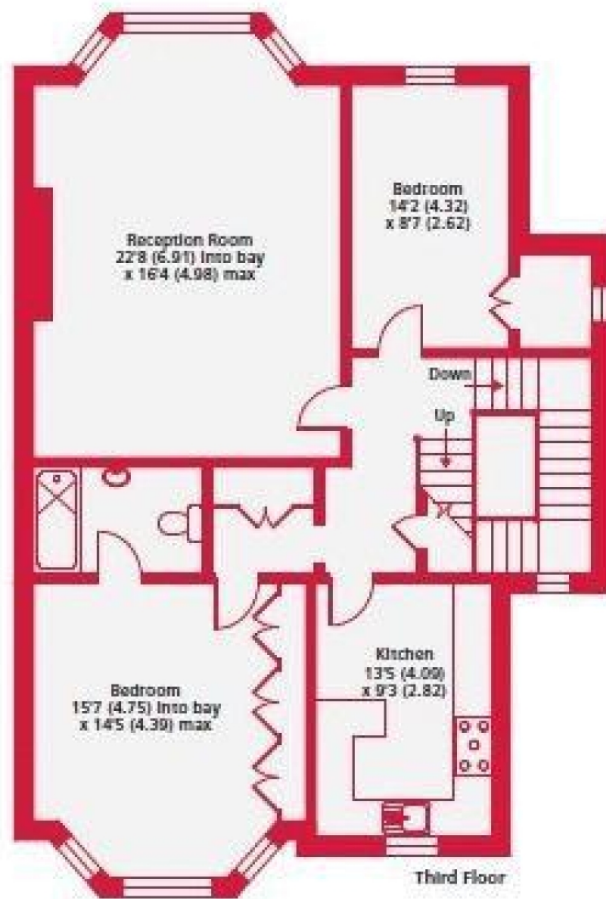
Belsize Park is in a highly desirable area in North central London nestled between Primrose Hill and Hampstead. The area benefits from wide open streets and a village type feel but it is extremely well located for easy access to central London. There is an abundance of parks and open spaces with Hampstead Heath and Primrose Hill both being just a short walk away. The areas many tube stops on both the Northern and Jubilee lines provide great access to the City & Canary Wharf.











# Particulars

## Property

Fellows Road, Belsize Park, London, NW3  
£940

## Rooms



2



2



4

## Features

- Communal gardens

## Information

Council Tax



Oliver Kent

[oliver.kent@vitaproperties.uk](mailto:oliver.kent@vitaproperties.uk)  
+4477 7274 0351



Scan for our website





T: +4420 7759 2199

E: [enquiries@vitaproperties.uk](mailto:enquiries@vitaproperties.uk)

Disclaimer: These particulars are prepared as a general guide for prospective purchasers or tenants and do not constitute, nor constitute part of, an offer or contract. All statements, descriptions, and measurements contained herein are given in good faith and are believed to be correct at the time of printing, but any intending purchaser or tenant should not rely on them as statements or representations of fact and must satisfy themselves by inspection or otherwise as to their correctness. Floor plans and photographs are for illustrative purposes only and may not be to scale. The position and size of doors, windows, appliances, and other features are approximate. Anti-Money Laundering (AML): In line with the Money Laundering, Terrorist Financing and Transfer of Funds Regulations 2017, we are required to carry out customer due diligence checks. Buyers/tenants will be asked to provide proof of identity, address, and source of funds before a sale or rental can be agreed. Data Protection (GDPR): Personal information supplied to Vita Properties will be processed in accordance with the General Data Protection Regulation (GDPR). Your details may be retained for legitimate business purposes relating to property services. Full details of our Privacy Policy are available on request.

All rights reserved.