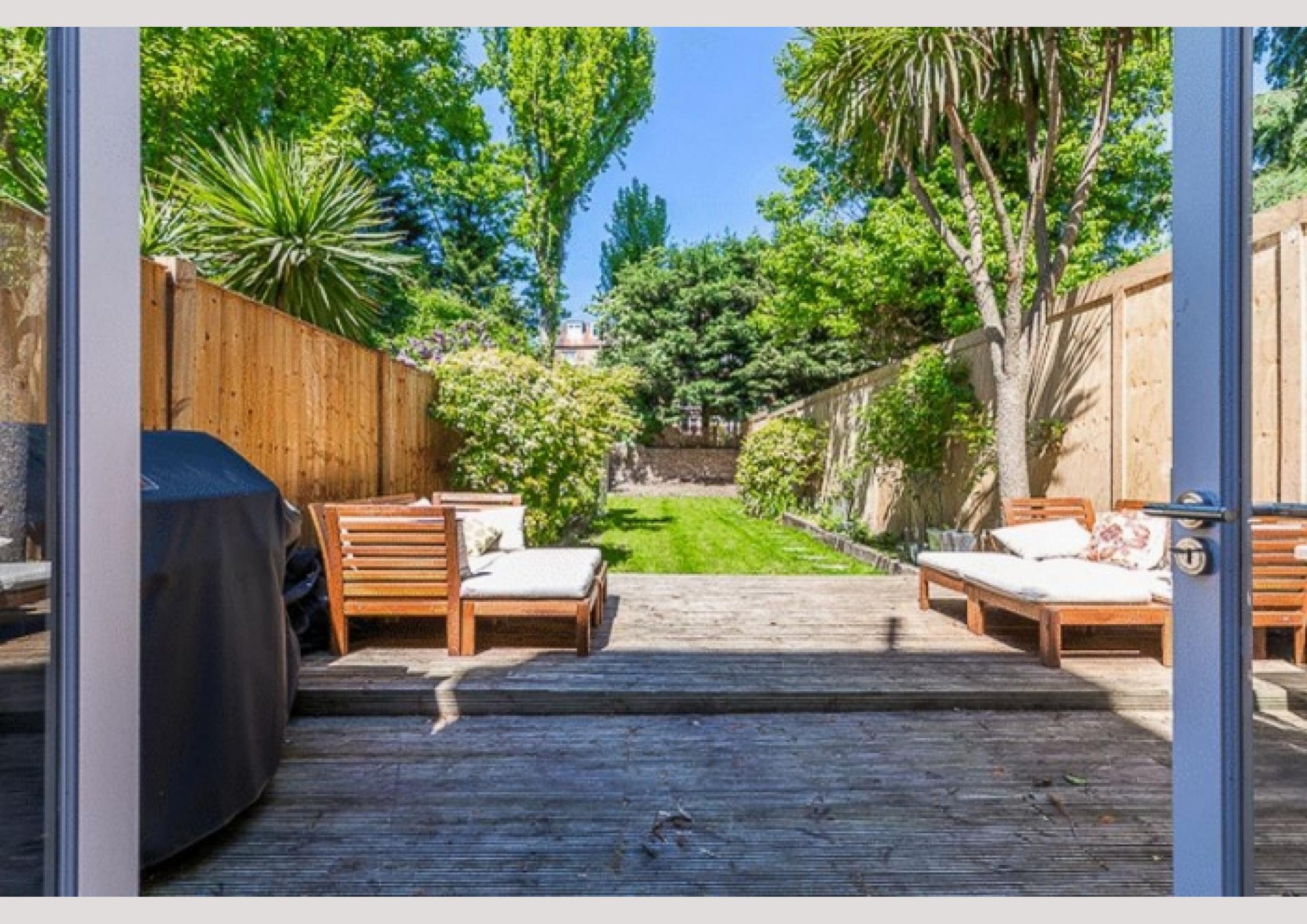




Greencroft Gardens  
SOUTH HAMPSTEAD, NW6

£1,000,000



A wonderful 2 double bedroom 2 bathroom (1 en-suite ) garden flat in this period house on the section between Fairhazel Gardens and Priory Road.

Well located for Finchley Road station and Waitrose, 02 Centre with gym, cinema and array of Restaurants.

Primrose Hill, Belsize Village and Swiss Cottage are close by with South Hampstead overground taking you to Euston (6 minutes away).

With planning to add a large outhouse at the bottom of the 75ft garden this modern flat further benefits a bright L shaped reception/ dining room, a separate eat in fitted kitchen in the conservatory which has been custom made with ample storage, a very large master bedroom with storage throughout, 2 bathrooms (1 en-suite).

The flat is offered with the share of freehold.





A wonderful 2 double bedroom 2 bathroom (1 en-suite ) garden flat in this period house on the section between Fairhazel Gardens and Priory Road.

Well located for Finchley Road station and Waitrose, O2 Centre with gym, cinema and array of Restaurants.

Primrose Hill, Belsize Village and Swiss Cottage are close by with South Hampstead overground taking you to Euston (6 minutes away).

With planning to add a large outhouse at the bottom of the 75ft garden this modern flat further benefits a bright L shaped reception/ dining room, a separate eat in fitted kitchen in the conservatory which has been custom made with ample storage, a very large master bedroom with storage throughout, 2 bathrooms (1 en-suite).

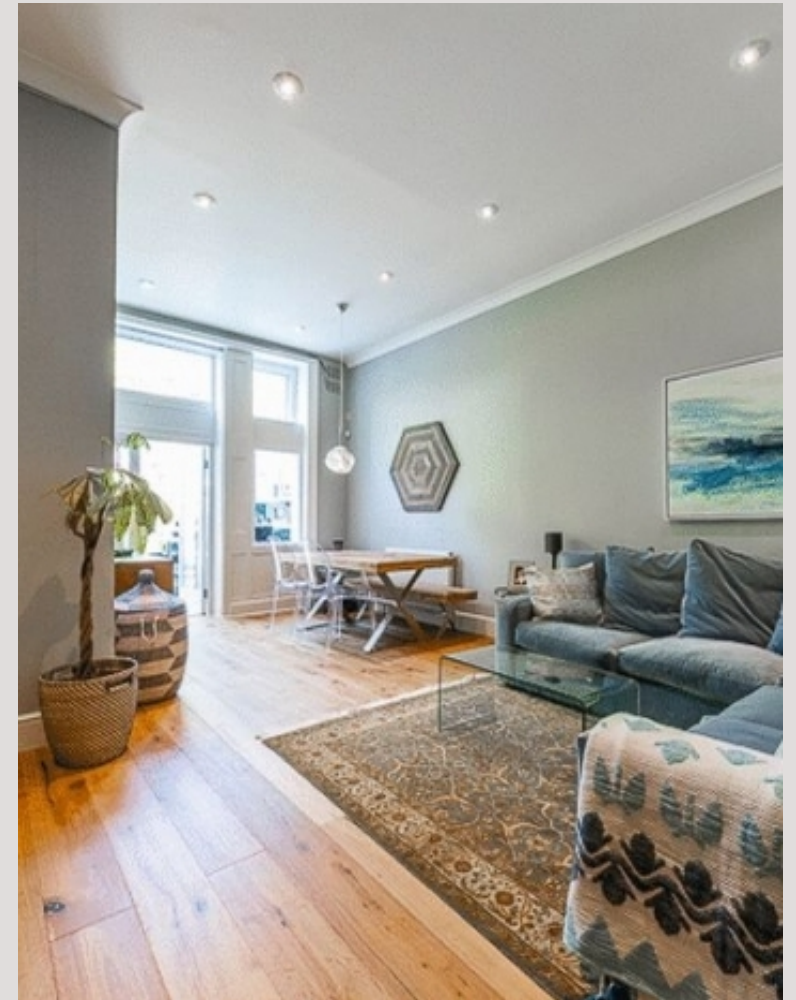
The flat is offered with the share of freehold.







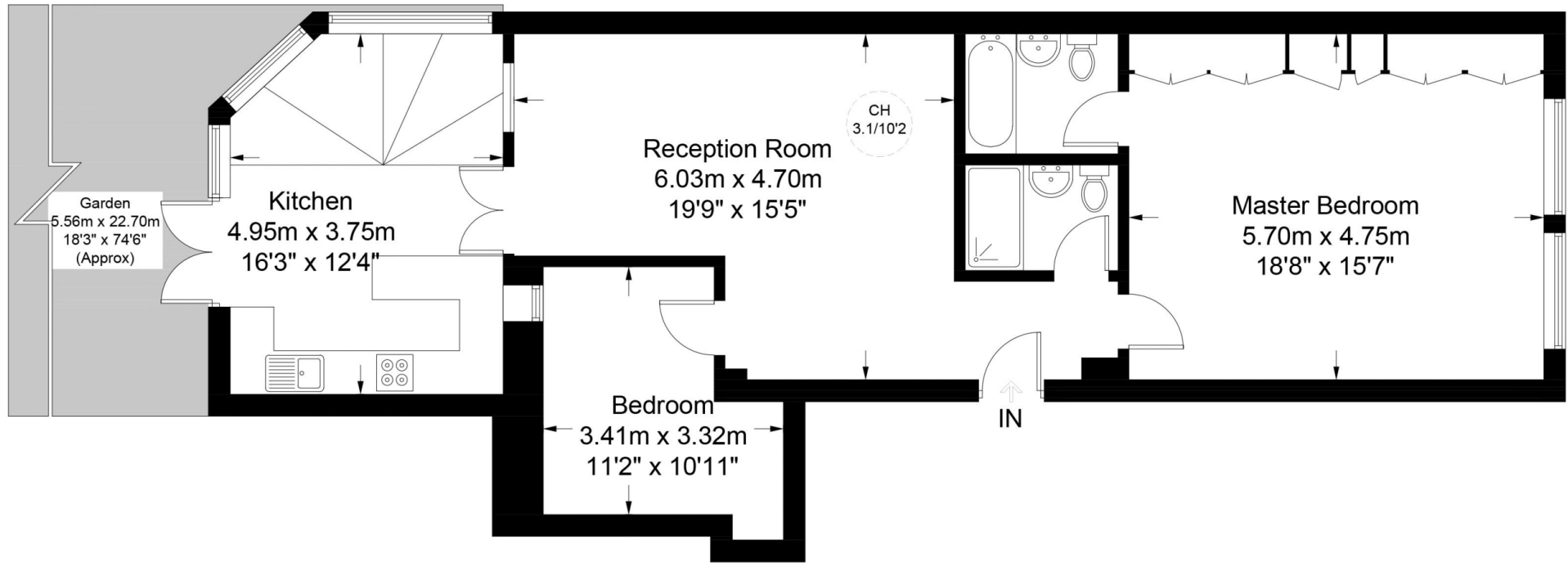
Scan for out video walkthrough



# Greencroft Gardens



Approximate Gross Internal Area = 996 sq ft / 92.6 sq m



## Ground Floor

This plan is for layout guidance only. Not drawn to scale unless stated. Windows and door openings are approximate. Whilst every care is taken in the preparation of this plan, please check all dimensions, shapes and compass bearings before making any decisions reliant upon them. (ID546530)

# Particulars

## Property

Greencroft Gardens, South Hampstead, NW6  
£1,000,000

## Rooms



1



2



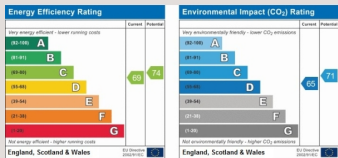
2

## Features

- Private garden with decked area
- Wooden floors throughout
- Large master bedroom
- Fitted storage

## Information

Council Tax



Oliver Kent

oliver.kent@vitaproperties.uk  
+4477 7274 0351



Scan for our website





T: +4420 7759 2199

E: [enquiries@vitaproperties.uk](mailto:enquiries@vitaproperties.uk)

Disclaimer: These particulars are prepared as a general guide for prospective purchasers or tenants and do not constitute, nor constitute part of, an offer or contract. All statements, descriptions, and measurements contained herein are given in good faith and are believed to be correct at the time of printing, but any intending purchaser or tenant should not rely on them as statements or representations of fact and must satisfy themselves by inspection or otherwise as to their correctness. Floor plans and photographs are for illustrative purposes only and may not be to scale. The position and size of doors, windows, appliances, and other features are approximate. Anti-Money Laundering (AML): In line with the Money Laundering, Terrorist Financing and Transfer of Funds Regulations 2017, we are required to carry out customer due diligence checks. Buyers/tenants will be asked to provide proof of identity, address, and source of funds before a sale or rental can be agreed. Data Protection (GDPR): Personal information supplied to Vita Properties will be processed in accordance with the General Data Protection Regulation (GDPR). Your details may be retained for legitimate business purposes relating to property services. Full details of our Privacy Policy are available on request.

All rights reserved.