



Sandwell Mansions

WEST END LANE, WEST HAMPSTEAD, LONDON, NW6

£1,300,000



Set in the most prominent part of West Hampstead is this fully modernised, interior designed exquisite 3 / 4 bed apartment - designed with families in mind and with excellent transport links (over ground, jubilee & Thameslink) as well as a vast array of local amenities on your doorstep. This 1350 sq ft versatile apartment can be used either as a 3 bed with 2 reception rooms, or a 4 bed with 1 reception room.

The main living room is beautifully presented with wood floors, gorgeous bay windows, original feature fireplace and decorative cornicing to the walls.

The second reception (or 4th bedroom) boasts stunning ceiling cornicing and bay windows.

The separate kitchen / diner is stylish in its rustic design (Schmitt German kitchen) - boasting a large island counter with breakfast bar, double oven, double stainless-steel fridge and freezer and a wealth of cupboard space.

There are two double bedrooms - both with built in wardrobes - and with the master boasting access to a trendy en-suite shower room with "his and her sinks".





The third bedroom is a large single bedroom also boasting built-in wardrobes.

Finally, you have the large family bathroom with walk-in shower.

This apartment boasts several unique benefits including acoustic soundproofed double glazed windows throughout, underfloor heating, impeccably high ceilings and some very cleverly implemented storage solutions.

The recent refurb and the flawless attention to detail really does set this gorgeous family home apart from the rest and it really does need to be seen to be truly appreciated.

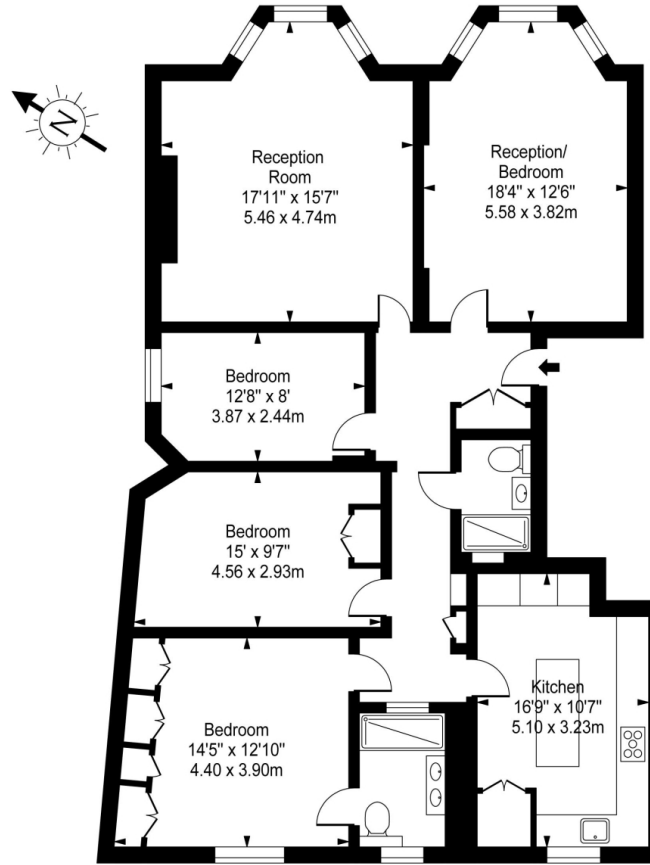








Sandwell Mansions, NW6



Ground Floor

Approx Gross Internal Area **1347 Sq Ft - 125.19 Sq M**

For Illustration Purposes Only - Not To Scale Floor Plan by www.nogaphotostudio.com Ref: No.38632

This floor plan should be used as a general outline for guidance only. Any intending purchaser or lessee should satisfy themselves by inspection, searches, enquiries and full survey as to the correctness of each statement. Any areas, measurements or distances quoted are approximate and should not be used to value a property or be the basis of any sale or let.



T: +4420 7759 2199

E: enquiries@vitaproperties.uk

Disclaimer: These particulars are prepared as a general guide for prospective purchasers or tenants and do not constitute, nor constitute part of, an offer or contract. All statements, descriptions, and measurements contained herein are given in good faith and are believed to be correct at the time of printing, but any intending purchaser or tenant should not rely on them as statements or representations of fact and must satisfy themselves by inspection or otherwise as to their correctness. Floor plans and photographs are for illustrative purposes only and may not be to scale. The position and size of doors, windows, appliances, and other features are approximate. Anti-Money Laundering (AML): In line with the Money Laundering, Terrorist Financing and Transfer of Funds Regulations 2017, we are required to carry out customer due diligence checks. Buyers/tenants will be asked to provide proof of identity, address, and source of funds before a sale or rental can be agreed. Data Protection (GDPR): Personal information supplied to Vita Properties will be processed in accordance with the General Data Protection Regulation (GDPR). Your details may be retained for legitimate business purposes relating to property services. Full details of our Privacy Policy are available on request.

All rights reserved.