



Eton Road

BELSIZE PARK, LONDON, NW3

£500



A lovely two bed apartment bursting with timeless original features such as high ceilings throughout, feature fireplace in the living room and a pleasing combination of large bay windows and sash windows.

Comprising of a large semi-open plan living room and kitchen, master bedroom with en-suite shower room, second bedroom and large family bathroom.

Set on the raised ground floor this apartment is set a 5 minute walk from Chalk Farm Underground (Northern Line) and the many amenities of Haverstock Hill.





A lovely two bed apartment bursting with timeless original features such as high ceilings throughout, feature fireplace in the living room and a pleasing combination of large bay windows and sash windows.

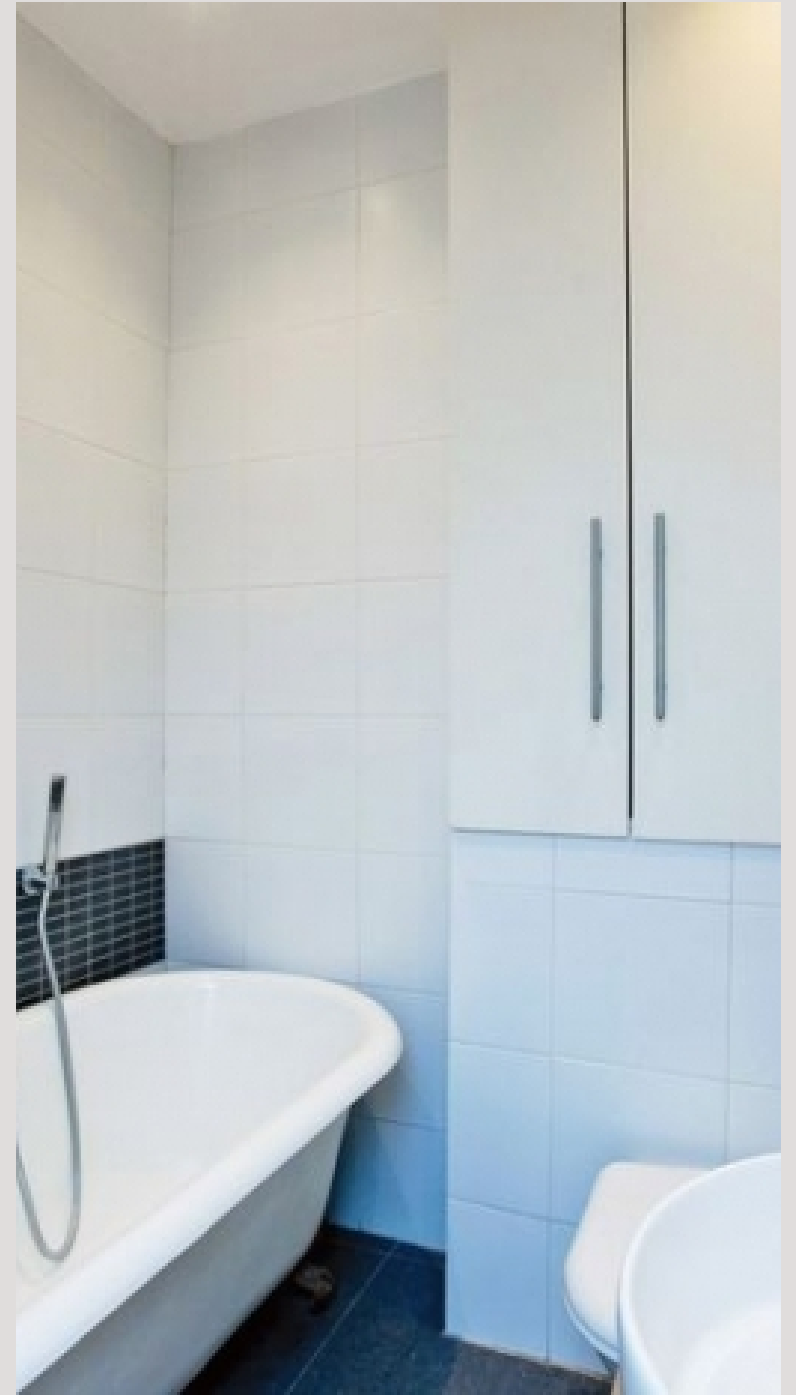
Comprising of a large semi-open plan living room and kitchen, master bedroom with en-suite shower room, second bedroom and large family bathroom.

Set on the raised ground floor this apartment is set a 5 minute walk from Chalk Farm Underground (Northern Line) and the many amenities of Haverstock Hill.

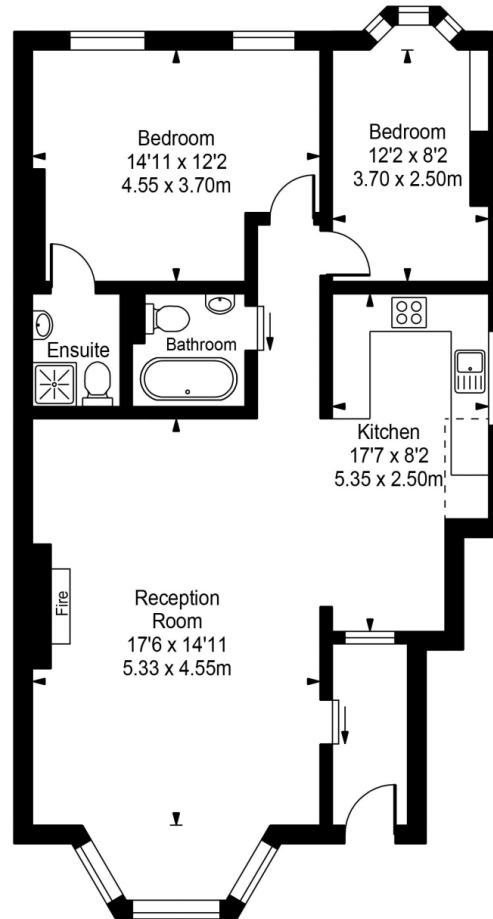
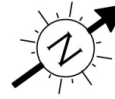








Eton Road



Approx Gross Internal Area **951 Sq Ft - 88.35 Sq M**

FOR ILLUSTRATIVE PURPOSES ONLY. NOT TO SCALE.

Whilst every attempt has been made to ensure the accuracy of the floorplan shown, all measurements, positioning, fixtures, fittings and any other data shown are an approximate interpretation for illustrative purposes only and are not to scale. No responsibility is taken for any error, omission, misstatement or use of data shown. Floor plan by www.bestangle.co.uk

Particulars

Property

Eton Road, Belsize Park, London, NW3
£500

Rooms

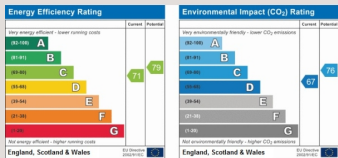


Features

- Two Bed, Two Bath
- Raised Ground Floor
- High Ceilings
- Great Location

Information

Council Tax



Oliver Kent

oliver.kent@vitaproperties.uk
+4477 7274 0351



Scan for our website





T: +4420 7759 2199

E: enquiries@vitaproperties.uk

Disclaimer: These particulars are prepared as a general guide for prospective purchasers or tenants and do not constitute, nor constitute part of, an offer or contract. All statements, descriptions, and measurements contained herein are given in good faith and are believed to be correct at the time of printing, but any intending purchaser or tenant should not rely on them as statements or representations of fact and must satisfy themselves by inspection or otherwise as to their correctness. Floor plans and photographs are for illustrative purposes only and may not be to scale. The position and size of doors, windows, appliances, and other features are approximate. Anti-Money Laundering (AML): In line with the Money Laundering, Terrorist Financing and Transfer of Funds Regulations 2017, we are required to carry out customer due diligence checks. Buyers/tenants will be asked to provide proof of identity, address, and source of funds before a sale or rental can be agreed. Data Protection (GDPR): Personal information supplied to Vita Properties will be processed in accordance with the General Data Protection Regulation (GDPR). Your details may be retained for legitimate business purposes relating to property services. Full details of our Privacy Policy are available on request.

All rights reserved.