



Dunrobin Court

FINCHLEY ROAD, HAMPSTEAD, LONDON, NW3

£1,750,000



Vita Properties are delighted to offer a rare opportunity to buy this stunning and exceptionally large first floor apartment situated within this sought-after mansion block.

This apartment has been completely renovated and remodelled throughout with the highest level of care and attention to detail. This property boasts an impressive 2132 sq ft of luxuriously appointed living space. Comprising of a large reception room with feature fireplace, large windows and wood flooring, brand new kitchen with island counter, breakfast bar and all modern appliances, dining area, three bedrooms & two with built in wardrobes and the master boasting an en-suite bathroom, guest WC and two separate shower rooms. This apartment also benefits from use of one allocated parking space for one car and residents also have access to well-manicured communal gardens. This flexible apartment can either be used as a 3 bed with 2 reception rooms, or a 4 bed with 1 reception room.

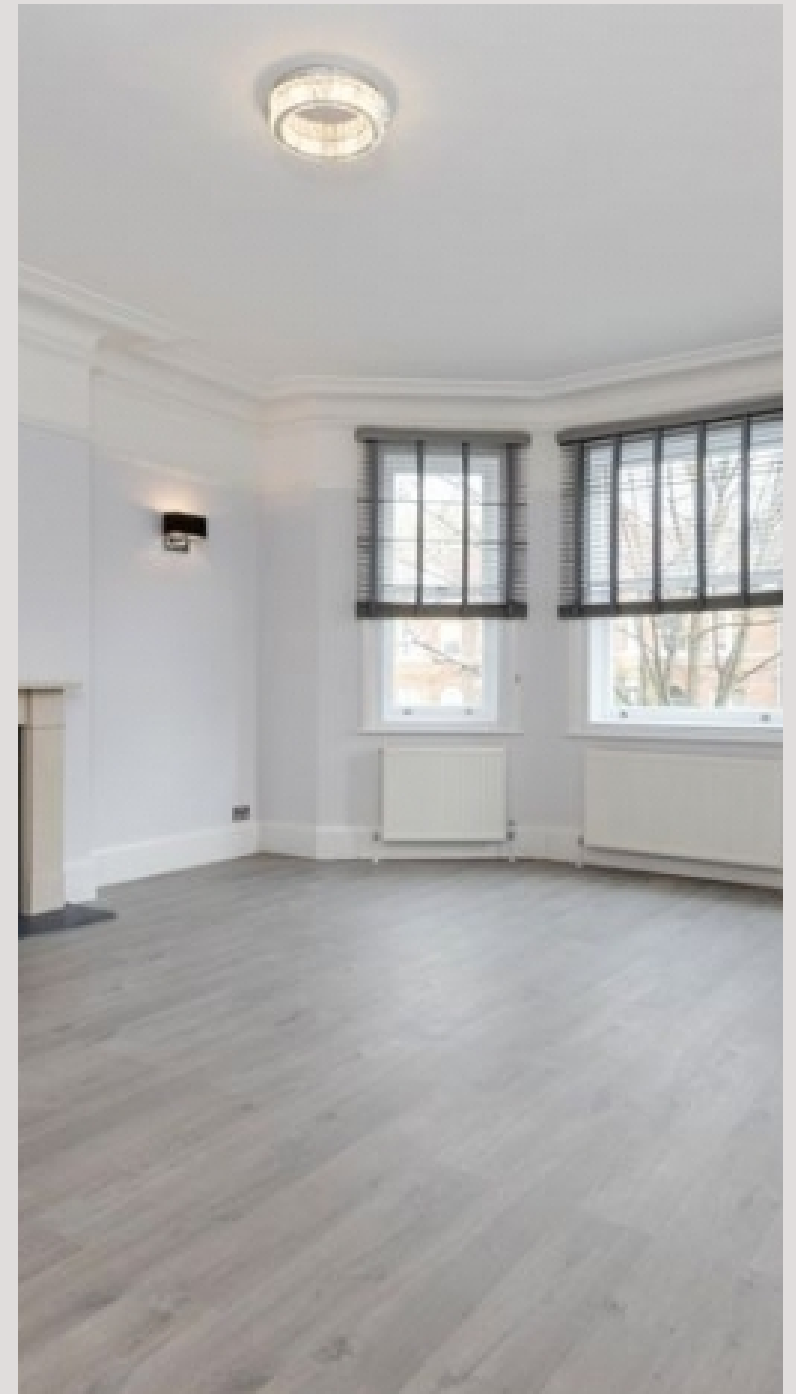
Dunrobin Court is conveniently located within a short walking distance to Swiss Cottage which offers a variety of amenities including shops, bars, restaurants and impressive transport links. The closest stations are Finchley Road (Metropolitan & Jubilee Line) & Swiss Cottage Station (Jubilee line)



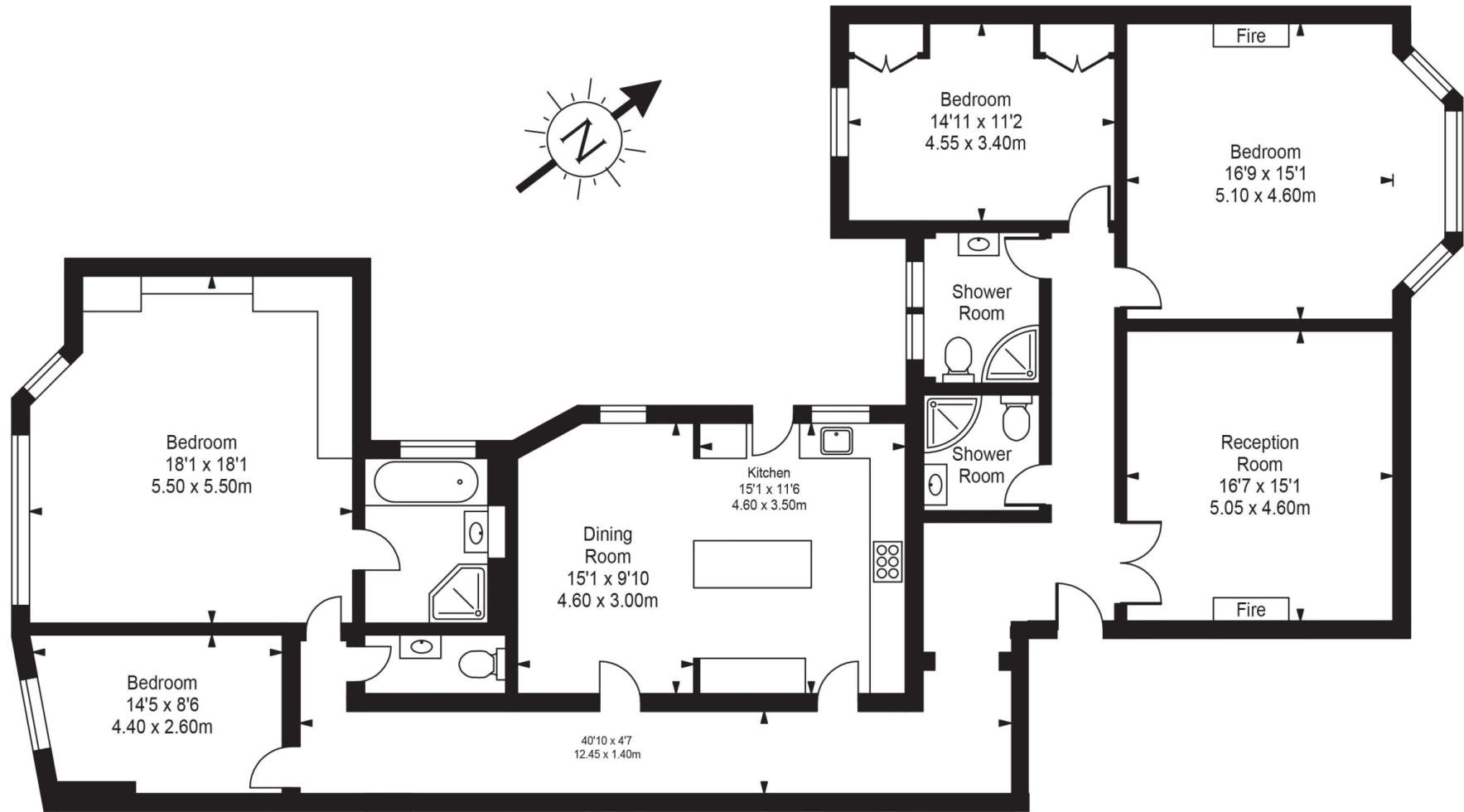








Dunrobin Court



Approx Gross Internal Area 2132 Sq Ft - 198 Sq M

FOR ILLUSTRATIVE PURPOSES ONLY. NOT TO SCALE.

Whilst every attempt has been made to ensure the accuracy of the floorplan shown, all measurements, positioning, fixtures, fittings and any other data shown are an approximate interpretation for illustrative purposes only and are not to scale. No responsibility is taken for any error, omission, misstatement or use of data shown.

Floor plan by www.bestangle.co.uk

Particulars

Property

Dunrobin Court, Finchley Road, Hampstead, London, NW3
£1,750,000

Rooms



2



3



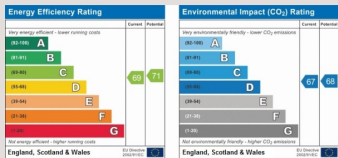
4

Features

- Renovated & Remodelled
- Beautifully Presented
- Parking for One Car
- Moments to Finchley Road tube

Information

Council Tax



Oliver Kent

oliver.kent@vitaproperties.uk
+4477 7274 0351



Scan for our website





T: +4420 7759 2199
E: enquiries@vitaproperties.uk

Disclaimer: These particulars are prepared as a general guide for prospective purchasers or tenants and do not constitute, nor constitute part of, an offer or contract. All statements, descriptions, and measurements contained herein are given in good faith and are believed to be correct at the time of printing, but any intending purchaser or tenant should not rely on them as statements or representations of fact and must satisfy themselves by inspection or otherwise as to their correctness. Floor plans and photographs are for illustrative purposes only and may not be to scale. The position and size of doors, windows, appliances, and other features are approximate. Anti-Money Laundering (AML): In line with the Money Laundering, Terrorist Financing and Transfer of Funds Regulations 2017, we are required to carry out customer due diligence checks. Buyers/tenants will be asked to provide proof of identity, address, and source of funds before a sale or rental can be agreed. Data Protection (GDPR): Personal information supplied to Vita Properties will be processed in accordance with the General Data Protection Regulation (GDPR). Your details may be retained for legitimate business purposes relating to property services. Full details of our Privacy Policy are available on request.

All rights reserved.