



Hamilton Terrace
ST JOHNS WOOD, LONDON, NW8

£750



Available immediately is this stunning three bedroom property in the heart of St Johns Wood A stunning three bedroom apartment situated on the fourth floor of this handsome period conversion on a very exclusive road in St. Johns Wood.

The property is in excellent condition throughout and offers two good sized double bedrooms, two modern bathrooms (one en-suite), a spacious open plan reception room and fully fitted kitchen.

The property has ample storage throughout and ideally located for access into Central London with St.

Johns Wood and Maida Vale Underground stations both a short walk away - The property also has access to a large communal terrace



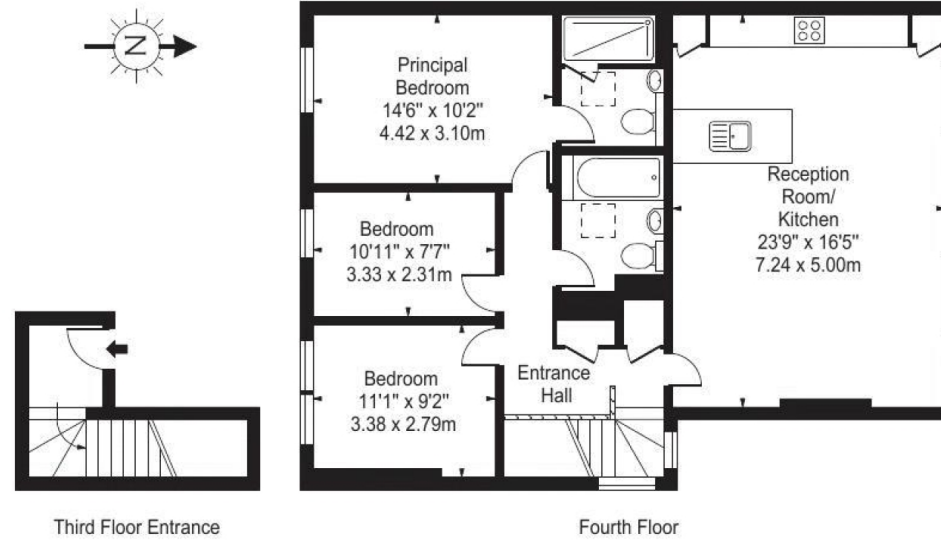








Hamilton Terrace, NW8



Approx Gross Internal Area 1027 Sq Ft - 95.53 Sq M

For Illustration Purposes Only - Not To Scale Floor Plan by www.nogaphotostudio.com Ref: No. 24645

This floor plan should be used as a general outline for guidance only. Any intending purchaser or lessee should satisfy themselves by inspection, searches, enquiries and full survey as to the correctness of each statement. Any areas, measurements or distances quoted are approximate and should not be used to value a property or be the basis of any sale or let.

Particulars

Property

Hamilton Terrace, St Johns Wood, London, NW8
£750

Rooms

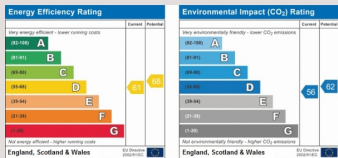


Features

- Modern and trendy
- Three bedrooms
- Two bathrooms
- Moments to Maida Vale tube

Information

Council Tax



Oliver Kent

oliver.kent@vitaproperties.uk
+4477 7274 0351



Scan for our website





T: +4420 7759 2199

E: enquiries@vitaproperties.uk

Disclaimer: These particulars are prepared as a general guide for prospective purchasers or tenants and do not constitute, nor constitute part of, an offer or contract. All statements, descriptions, and measurements contained herein are given in good faith and are believed to be correct at the time of printing, but any intending purchaser or tenant should not rely on them as statements or representations of fact and must satisfy themselves by inspection or otherwise as to their correctness. Floor plans and photographs are for illustrative purposes only and may not be to scale. The position and size of doors, windows, appliances, and other features are approximate. Anti-Money Laundering (AML): In line with the Money Laundering, Terrorist Financing and Transfer of Funds Regulations 2017, we are required to carry out customer due diligence checks. Buyers/tenants will be asked to provide proof of identity, address, and source of funds before a sale or rental can be agreed. Data Protection (GDPR): Personal information supplied to Vita Properties will be processed in accordance with the General Data Protection Regulation (GDPR). Your details may be retained for legitimate business purposes relating to property services. Full details of our Privacy Policy are available on request.

All rights reserved.