



Buckland Crescent
BELSIZE PARK, LONDON, NW3

£560

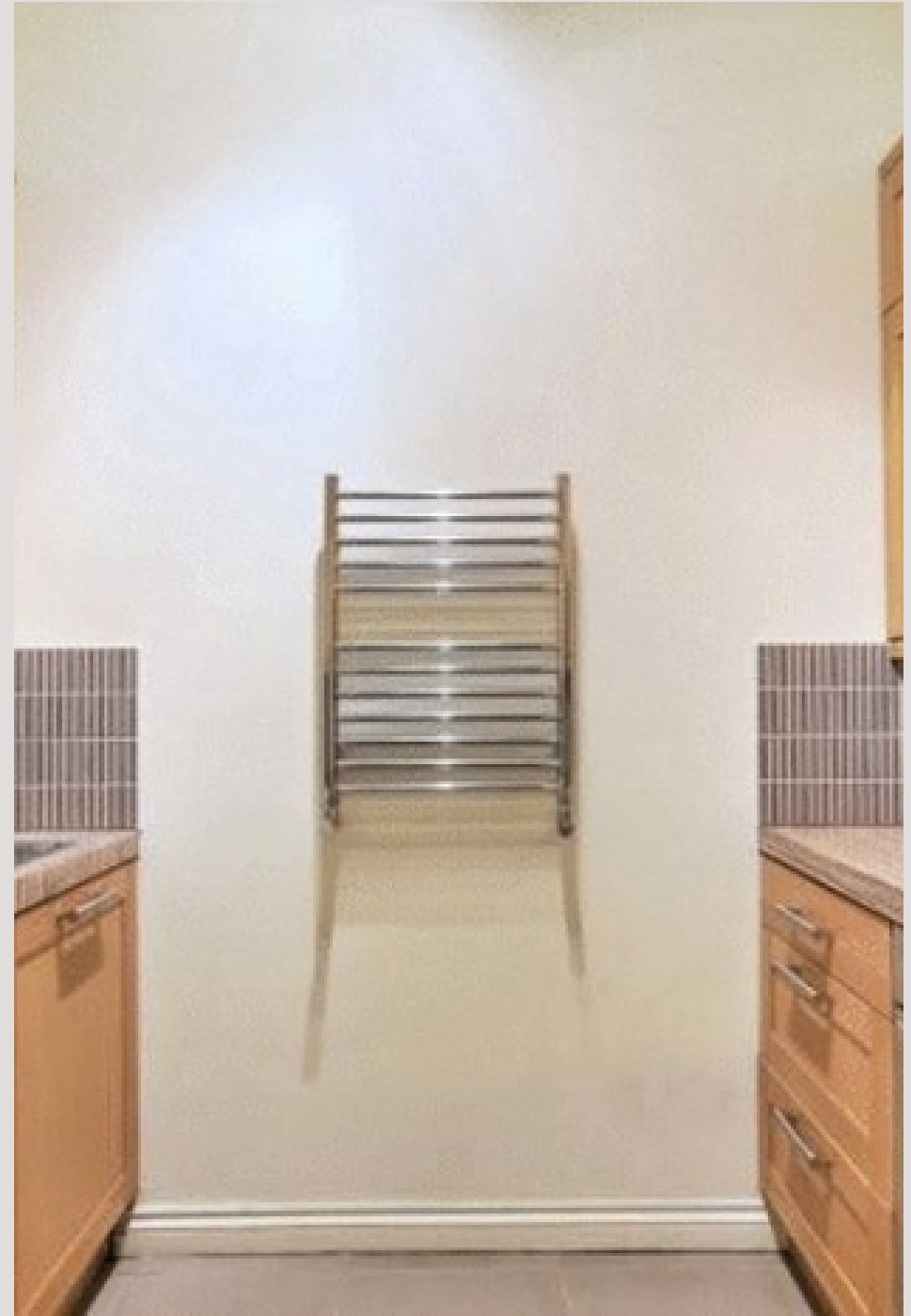


A stylish first floor, two bedroom apartment that has recently been refurbished to a high standard.

The flat consists of a spacious reception, two shower rooms, a separate kitchen and south facing decked balcony off the second bedroom as well as a third single room.

The flat is well positioned being only moments to Swiss Cottage tube and all the facilities, the apartment with neutral decor and cream carpeting.

Available from 24th Jan 2019

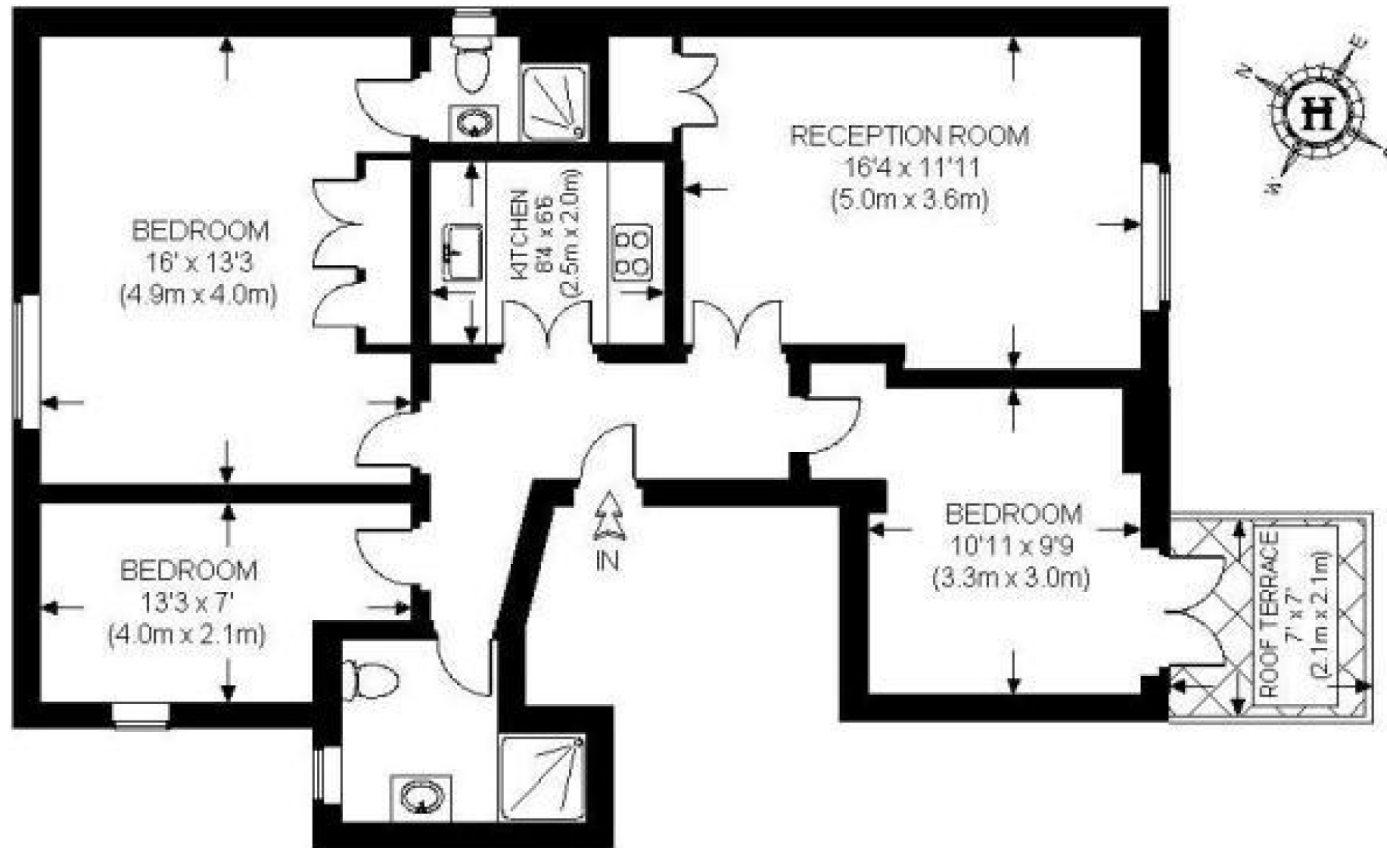








BUCKLAND CRESCENT



FIRST FLOOR

APPROXIMATE GROSS INTERNAL AREA = 873 SQ. FT. (81.1 SQ.M.)

This plan is for layout guidance only. Not drawn to scale unless stated. Windows & door openings are approximate. Whilst every care is taken in the preparation of this plan, please check all dimensions, shapes & compass bearings before making any decisions reliant upon them. Please be advised that Hamptons International / our agents have not seen or reviewed any building regulations or planning permission in relation to works carried out to the property.

Particulars

Property

Buckland Crescent, Belsize Park, London, NW3
£560

Rooms

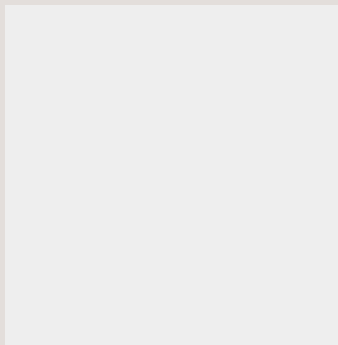


Features

- Spacious
- Well located
- Modern
- Balcony

Information

Council Tax



Oliver Kent

oliver.kent@vitaproperties.uk
+4477 7274 0351



Scan for our website





T: +4420 7759 2199
E: enquiries@vitaproperties.uk

Disclaimer: These particulars are prepared as a general guide for prospective purchasers or tenants and do not constitute, nor constitute part of, an offer or contract. All statements, descriptions, and measurements contained herein are given in good faith and are believed to be correct at the time of printing, but any intending purchaser or tenant should not rely on them as statements or representations of fact and must satisfy themselves by inspection or otherwise as to their correctness. Floor plans and photographs are for illustrative purposes only and may not be to scale. The position and size of doors, windows, appliances, and other features are approximate. Anti-Money Laundering (AML): In line with the Money Laundering, Terrorist Financing and Transfer of Funds Regulations 2017, we are required to carry out customer due diligence checks. Buyers/tenants will be asked to provide proof of identity, address, and source of funds before a sale or rental can be agreed. Data Protection (GDPR): Personal information supplied to Vita Properties will be processed in accordance with the General Data Protection Regulation (GDPR). Your details may be retained for legitimate business purposes relating to property services. Full details of our Privacy Policy are available on request.

All rights reserved.