



Glenmore Road
BELSIZE PARK, LONDON, NW3

£3,475,000



We are delighted to present as sole agents this stunning 5/6 bed Edwardian mid terraced house set in the heart of Belsize Park.

This incredible house is beautifully presented, bursting with timeless original features and boasts an abundance of natural light and high ceilings throughout. Comprising of two large reception rooms both with wood flooring, large windows and spot lighting, a private low-maintenance garden with custom BBQ pit, a fully fitted kitchen with all modern appliances including double oven and dishwasher, utility room with separate washer and dryer, five double bedrooms the master boasting en-suite bathroom access and walk-in wardrobe, further bedroom/ multi-use room in the loft with great views across London, two family bathrooms and guest WC.

Ideally located being less than a minute's walk to Belsize Park Station and all the amenities of Haverstock Hill.





We are delighted to present as sole agents this stunning 5/6 bed Edwardian mid terraced house set in the heart of Belsize Park.

This incredible house is beautifully presented, bursting with timeless original features and boasts an abundance of natural light and high ceilings throughout. Comprising of two large reception rooms both with wood flooring, large windows and spot lighting, a private low-maintenance garden with custom BBQ pit, a fully fitted kitchen with all modern appliances including double oven and dishwasher, utility room with separate washer and dryer, five double bedrooms the master boasting en-suite bathroom access and walk-in wardrobe, further bedroom/multi-use room in the loft with great views across London, two family bathrooms and guest WC.

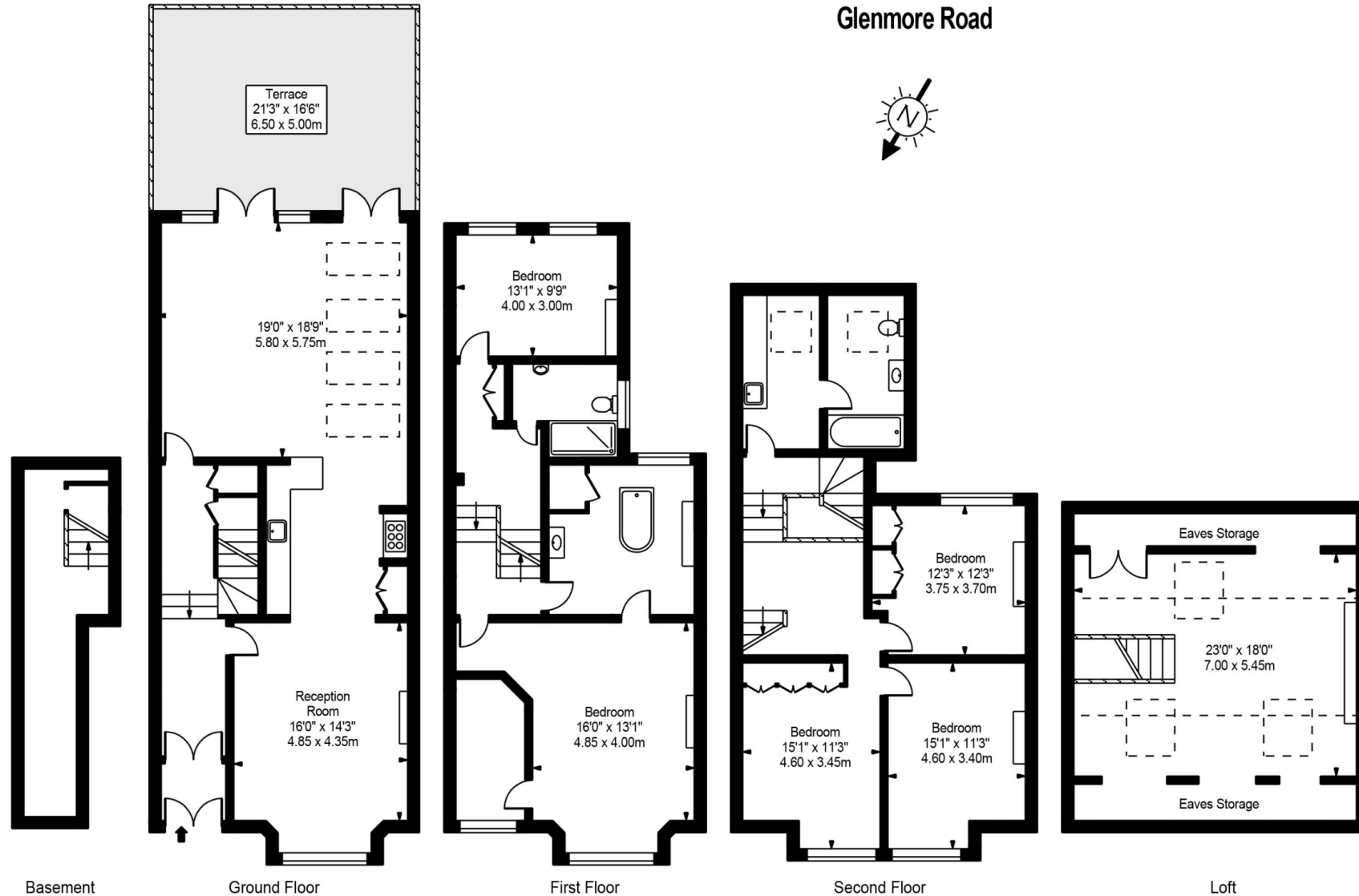
Ideally located being less than a minute's walk to Belsize Park Station and all the amenities of Haverstock Hill.







Glenmore Road



Approx Gross Internal Area **3370 Sq Ft - 313.05 Sq M**

FOR ILLUSTRATIVE PURPOSES ONLY. NOT TO SCALE.

Whilst every attempt has been made to ensure the accuracy of the floorplan shown, all measurements, positioning, fixtures, fittings and any other data shown are an approximate interpretation for illustrative purposes only and are not to scale. No responsibility is taken for any error, omission, misstatement or use of data shown.

Floor plan by www.bestangle.co.uk

Particulars

Property

Glenmore Road, Belsize Park, London, NW3
£3,475,000

Rooms

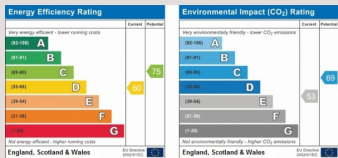
-  2
-  3
-  5+

Features

- Six Bed
- Three Bath
- Terraced House
- Utility Room

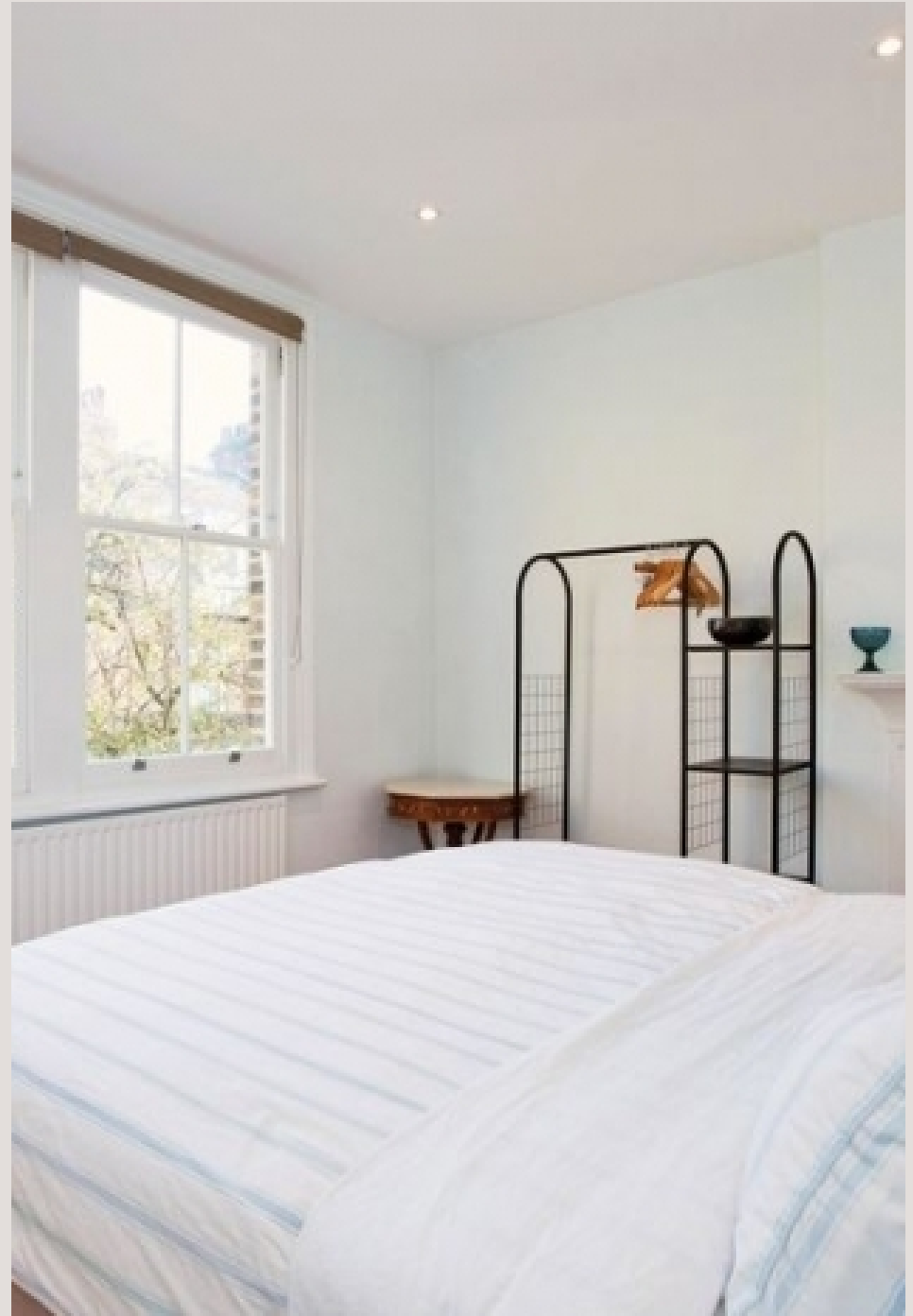
Information

Council Tax



Oliver Kent

oliver.kent@vitaproperties.uk
+4477 7274 0351



Scan for our website





T: +4420 7759 2199
E: enquiries@vitaproperties.uk

Disclaimer: These particulars are prepared as a general guide for prospective purchasers or tenants and do not constitute, nor constitute part of, an offer or contract. All statements, descriptions, and measurements contained herein are given in good faith and are believed to be correct at the time of printing, but any intending purchaser or tenant should not rely on them as statements or representations of fact and must satisfy themselves by inspection or otherwise as to their correctness. Floor plans and photographs are for illustrative purposes only and may not be to scale. The position and size of doors, windows, appliances, and other features are approximate. Anti-Money Laundering (AML): In line with the Money Laundering, Terrorist Financing and Transfer of Funds Regulations 2017, we are required to carry out customer due diligence checks. Buyers/tenants will be asked to provide proof of identity, address, and source of funds before a sale or rental can be agreed. Data Protection (GDPR): Personal information supplied to Vita Properties will be processed in accordance with the General Data Protection Regulation (GDPR). Your details may be retained for legitimate business purposes relating to property services. Full details of our Privacy Policy are available on request.

All rights reserved.