



## Chappell Lofts

BELMONT STREET, CHALK FARM, LONDON, NW1

£5,000



Set in the old Chappell Piano Factory built in 1866-67 and located on Belmont Street, off Chalk Farm Road, in the heart of London's vibrant Camden area, are a range of two and three bedroom loft apartments that form part of this stunning bespoke conversion.

Located across the upper floors the loft apartments have been finished to an extremely high specification and benefit from retained period features, voluminous interiors, 12 ft high ceilings and large sash windows.

The high specification includes custom designed Italian Scavolini kitchens with Bora and Miele integrated appliances, Duravit Philippe Starck bathroom suites with walk-in showers, Waterworks Taps, Devon & Devon freestanding bathtubs and underfloor heating.

Finishing touches include Oak parquet flooring throughout, air conditioned bedrooms, cast iron feature radiators and columns, exposed beams, bespoke doors and custom made wardrobes, shelving and joinery.

This unique penthouse apartment set over 4011 sq ft comprises of an incredible triple aspect reception room with balcony and views over London and opens into a kitchen dining area with direct access on to a further large terrace.





There is a master bedroom with en-suite bathroom and built-in storage and access to a third terrace, and three further double bedrooms all with en-suite bathrooms and built-in storage.

The property further benefits from a spectacular Club Lounge providing residents with a private VIP entertainment venue for relaxation and entertaining.

Facilities include a club lounge, bespoke cocktail bar/dj booth, party/club sound/lighting system; 183 inch cinema screen, swimming pool, spa pool and gymnasium.

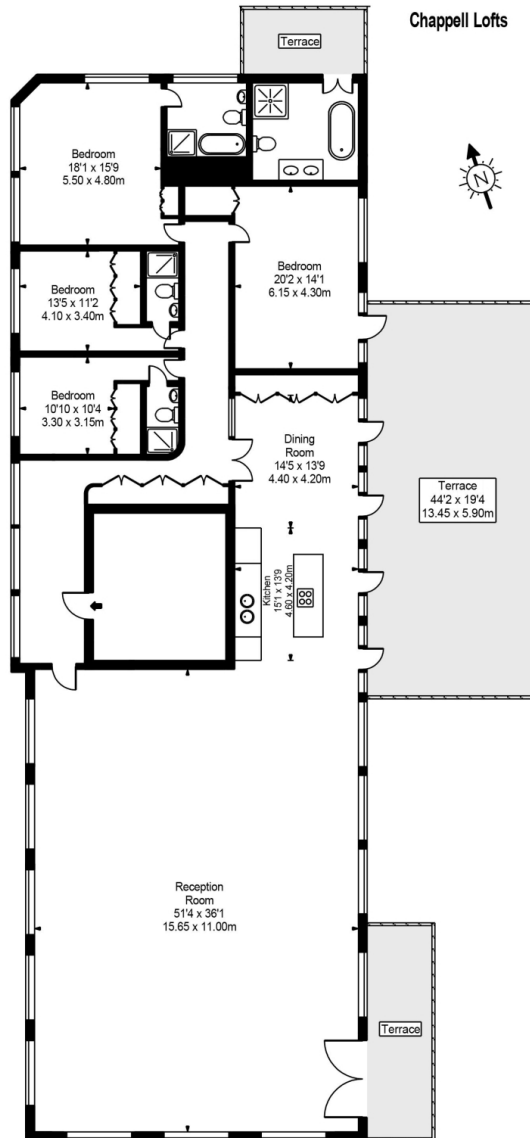
Residents will also benefit from a 24 hour concierge service.











Approx Gross Internal Area 4011 Sq Ft - 372.65 Sq M



FOR ILLUSTRATIVE PURPOSES ONLY. NOT TO SCALE.

Whilst every attempt has been made to ensure the accuracy of the floorplan shown, all measurements, positioning, fixtures, fittings and any other data shown are an approximate interpretation for illustrative purposes only and are not to scale. No responsibility is taken for any error, omission, misstatement or use of data shown. Floor plan by [www.bestangle.co.uk](http://www.bestangle.co.uk)

# Particulars

## Property

Chappell Lofts, Belmont Street, Chalk Farm, London, NW1  
£5,000

## Rooms



1



4



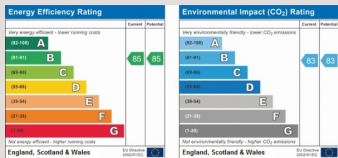
4

## Features

- Four Bedrooms
- Large Triple Aspect Reception Room
- Three Terraces
- Spectacular Club Lounge

## Information

Council Tax



Oliver Kent

oliver.kent@vitaproperties.uk  
+4477 7274 0351



Scan for our website





T: +4420 7759 2199  
E: [enquiries@vitaproperties.uk](mailto:enquiries@vitaproperties.uk)

Disclaimer: These particulars are prepared as a general guide for prospective purchasers or tenants and do not constitute, nor constitute part of, an offer or contract. All statements, descriptions, and measurements contained herein are given in good faith and are believed to be correct at the time of printing, but any intending purchaser or tenant should not rely on them as statements or representations of fact and must satisfy themselves by inspection or otherwise as to their correctness. Floor plans and photographs are for illustrative purposes only and may not be to scale. The position and size of doors, windows, appliances, and other features are approximate. Anti-Money Laundering (AML): In line with the Money Laundering, Terrorist Financing and Transfer of Funds Regulations 2017, we are required to carry out customer due diligence checks. Buyers/tenants will be asked to provide proof of identity, address, and source of funds before a sale or rental can be agreed. Data Protection (GDPR): Personal information supplied to Vita Properties will be processed in accordance with the General Data Protection Regulation (GDPR). Your details may be retained for legitimate business purposes relating to property services. Full details of our Privacy Policy are available on request.

All rights reserved.