



Marlborough Mansions

CANNON HILL, WEST HAMPSTEAD, LONDON, NW6

£1,695,500



Located in one of the most sought after mansion blocks in West Hampstead known as the BAM Estate and offering the ability to create the perfect home is this fantastic four bedroom apartment with two receptions rooms, two bathrooms, working fireplaces and access to an amazing communal garden.

Cannon Hill is superbly located between Hampstead and West Hampstead with a number of different options for public transport being the Jubilee, Metropolitan, Overground and Thameslink and Finchley Road & Frognal close by. Hampstead Heath is just over a mile away perfect to visit on your day off. Offered chain free with the Share of freehold





Located in one of the most sought after mansion blocks in West Hampstead known as the BAM Estate and offering the ability to create the perfect home is this fantastic four bedroom apartment with two reception rooms, two bathrooms, working fireplaces and access to an amazing communal garden.

Cannon Hill is superbly located between Hampstead and West Hampstead with a number of different options for public transport being the Jubilee, Metropolitan, Overground and Thameslink and Finchley Road & Frognal close by. Hampstead Heath is just over a mile away perfect to visit on your day off. Offered chain free with the Share of freehold

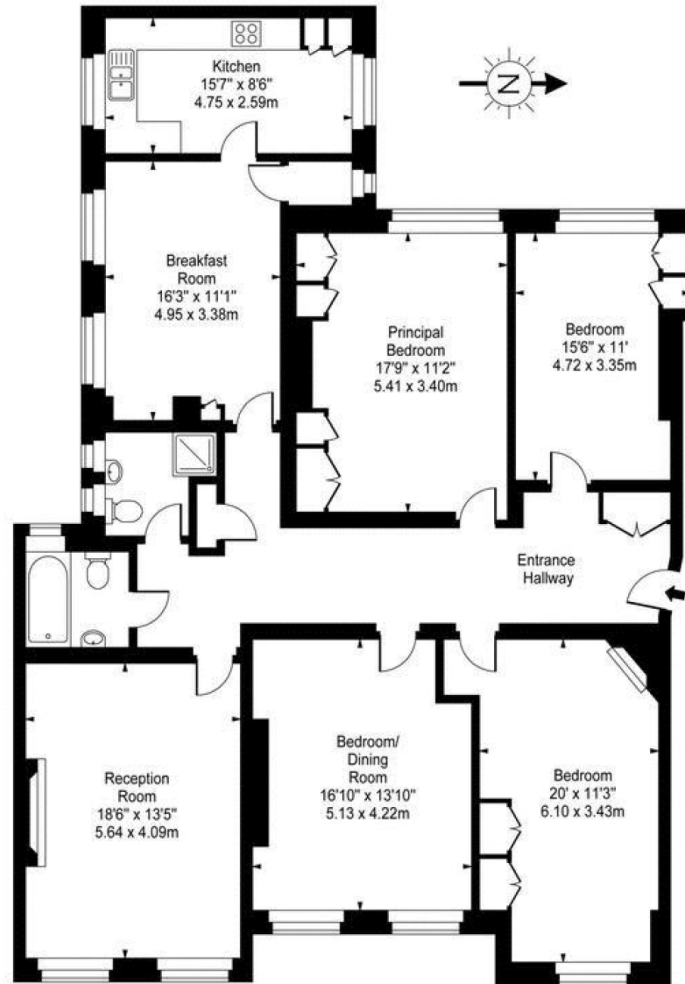








**Marlborough Mansions,
Cannon Hill,
West Hampstead, NW6**



Ground Floor

Approx Gross Internal Area 1894 Sq Ft - 175.95Sq M

For Illustration Purposes Only - Not To Scale

This floor plan should be used as a general outline for guidance only. Any intending purchaser or lessee should satisfy themselves by inspection, searches, enquiries and full survey as to the correctness of each statement. Any areas, measurements or distances quoted are approximate and should not be used to value a property or be the basis of any sale or let.

Particulars

Property

Marlborough Mansions, Cannon Hill, West Hampstead,
£6665,000W6

Rooms



2



2



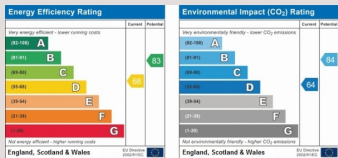
4

Features

- Extending to approx. 1894 sq ft/176 sq m
- On site management and portorage
- Separate storage in the basement
- Lateral living at its finest

Information

Council Tax



Oliver Kent

oliver.kent@vitaproperties.uk
+4477 7274 0351



Scan for our website





T: +4420 7759 2199
E: enquiries@vitaproperties.uk

Disclaimer: These particulars are prepared as a general guide for prospective purchasers or tenants and do not constitute, nor constitute part of, an offer or contract. All statements, descriptions, and measurements contained herein are given in good faith and are believed to be correct at the time of printing, but any intending purchaser or tenant should not rely on them as statements or representations of fact and must satisfy themselves by inspection or otherwise as to their correctness. Floor plans and photographs are for illustrative purposes only and may not be to scale. The position and size of doors, windows, appliances, and other features are approximate. Anti-Money Laundering (AML): In line with the Money Laundering, Terrorist Financing and Transfer of Funds Regulations 2017, we are required to carry out customer due diligence checks. Buyers/tenants will be asked to provide proof of identity, address, and source of funds before a sale or rental can be agreed. Data Protection (GDPR): Personal information supplied to Vita Properties will be processed in accordance with the General Data Protection Regulation (GDPR). Your details may be retained for legitimate business purposes relating to property services. Full details of our Privacy Policy are available on request.

All rights reserved.