



Greencroft Gardens
SOUTH HAMPSTEAD, LONDON, NW6

£1,225,000



Beautifully presented and extremely bright three double bedroom three bathroom upper maisonette set over the upper floors of this substantial period residence in the heart of South Hampstead.

This outstanding apartment offers in excess of 1300sq ft, and benefits from exceptional entertaining space with a magnificent 35ft kitchen/reception room having a feature fire place and high ceilings, principle bedroom with en-suite, two further double bedrooms (one with a further en-suite), family bathroom. Further benefits include: Amazing internal staircase, hardwood oak flooring, large sash windows, Share of Freehold.

Greencroft Gardens is superbly situated for access to many fashionable cafes and local amenities of West End Lane and Finchley road.





Beautifully presented and extremely bright three double bedroom three bathroom upper maisonette set over the upper floors of this substantial period residence in the heart of South Hampstead.

This outstanding apartment offers in excess of 1300sq ft, and benefits from exceptional entertaining space with a magnificent 35ft kitchen/reception room having a feature fire place and high ceilings, principle bedroom with en-suite, two further double bedrooms (one with a further en-suite), family bathroom. Further benefits include: Amazing internal staircase, hardwood oak flooring, large sash windows, Share of Freehold.

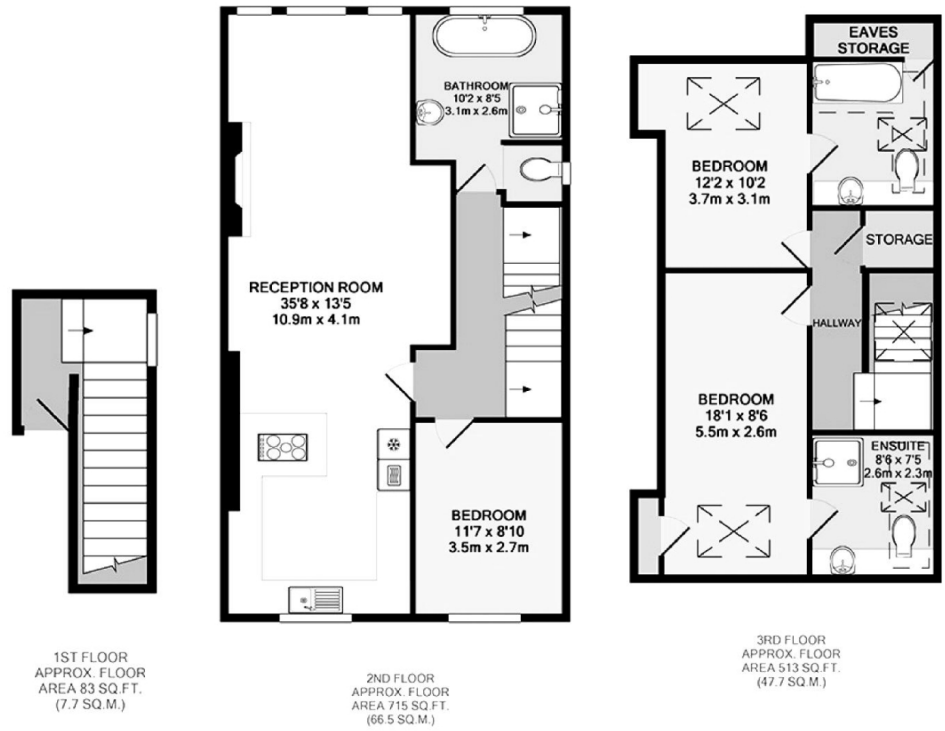
Greencroft Gardens is superbly situated for access to many fashionable cafes and local amenities of West End Lane and Finchley road.











GREENCROFT GARDENS NW6
TOTAL APPROX. FLOOR AREA 1311 SQ.FT. (121.8 SQ.M.)

Whilst every attempt has been made to ensure the accuracy of the floor plan contained here, measurements of doors, windows, rooms and any other items are approximate and no responsibility is taken for any error, omission, or mis-statement. This plan is for illustrative purposes only and should be used as such by any prospective purchaser. The services, systems and appliances shown have not been tested and no guarantee as to their operability or efficiency can be given

Particulars

Property

Greencroft Gardens, South Hampstead, London, NW6
£1,225,000

Rooms



1



3



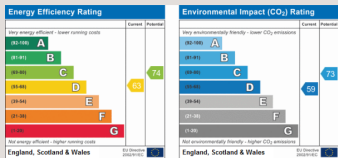
3

Features

- Three Double bedrooms
- Three Bathrooms
- Kitchen & Island
- Amazing Entertaining space

Information

Council Tax



Oliver Kent

oliver.kent@vitaproperties.uk
+4477 7274 0351



Scan for our website





T: +4420 7759 2199

E: enquiries@vitaproperties.uk

Disclaimer: These particulars are prepared as a general guide for prospective purchasers or tenants and do not constitute, nor constitute part of, an offer or contract. All statements, descriptions, and measurements contained herein are given in good faith and are believed to be correct at the time of printing, but any intending purchaser or tenant should not rely on them as statements or representations of fact and must satisfy themselves by inspection or otherwise as to their correctness. Floor plans and photographs are for illustrative purposes only and may not be to scale. The position and size of doors, windows, appliances, and other features are approximate. Anti-Money Laundering (AML): In line with the Money Laundering, Terrorist Financing and Transfer of Funds Regulations 2017, we are required to carry out customer due diligence checks. Buyers/tenants will be asked to provide proof of identity, address, and source of funds before a sale or rental can be agreed. Data Protection (GDPR): Personal information supplied to Vita Properties will be processed in accordance with the General Data Protection Regulation (GDPR). Your details may be retained for legitimate business purposes relating to property services. Full details of our Privacy Policy are available on request.

All rights reserved.