



Queens Terrace

ST JOHN'S WOOD, LONDON, NW8

£1,250



MOVE IN WITH NO TENANT FEE'S - A naturally bright 2 bed, 2 bath property presented in excellent decorative condition and boasting a number of additional benefits such as one secure underground parking space, lift access and porter. Briefly comprising of an exceptionally large living room, a fully integrated kitchen with double dishwasher, two large bedrooms - both with en-suite bathroom access and the master also offering extensive built in wardrobes as well as a separate guest WC and additional living space which can be used in a number of ways such as a dining room, winter garden or study. Well located for local amenities and transport links with St Johns Wood Underground station being a mere stones throw away and with easy access to both South Hampstead and Swiss Cottage Stations.





MOVE IN WITH NO TENANT FEE'S - A naturally bright 2 bed, 2 bath property presented in excellent decorative condition and boasting a number of additional benefits such as one secure underground parking space, lift access and porter.

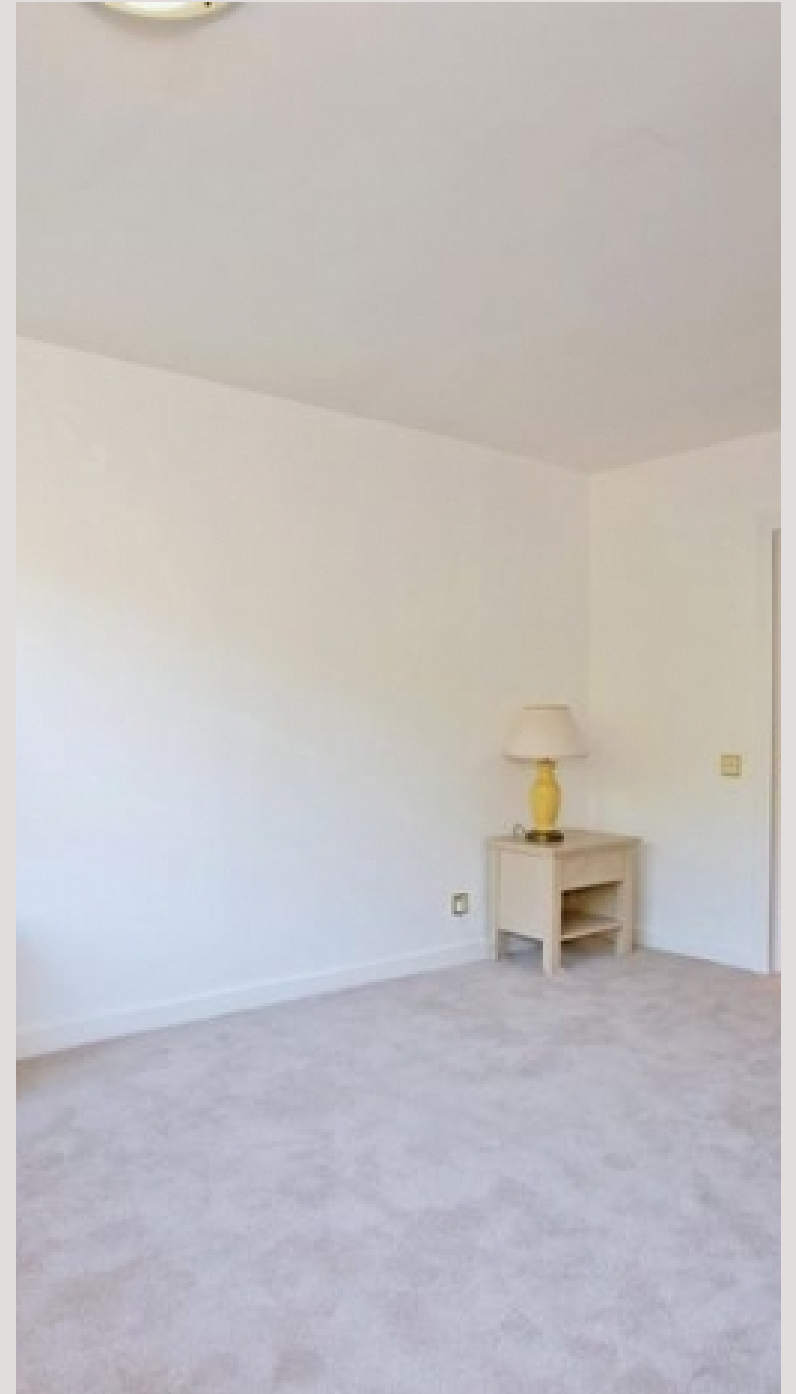
Briefly comprising of an exceptionally large living room, a fully integrated kitchen with double dishwasher, two large bedrooms - both with ensuite bathroom access and the master also offering extensive built in wardrobes as well as a separate guest WC and additional living space which can be used in a number of ways such as a dining room, winter garden or study.

Well located for local amenities and transport links with St Johns Wood Underground station being a mere stones throw away and with easy access to both South Hampstead and Swiss Cottage Stations.

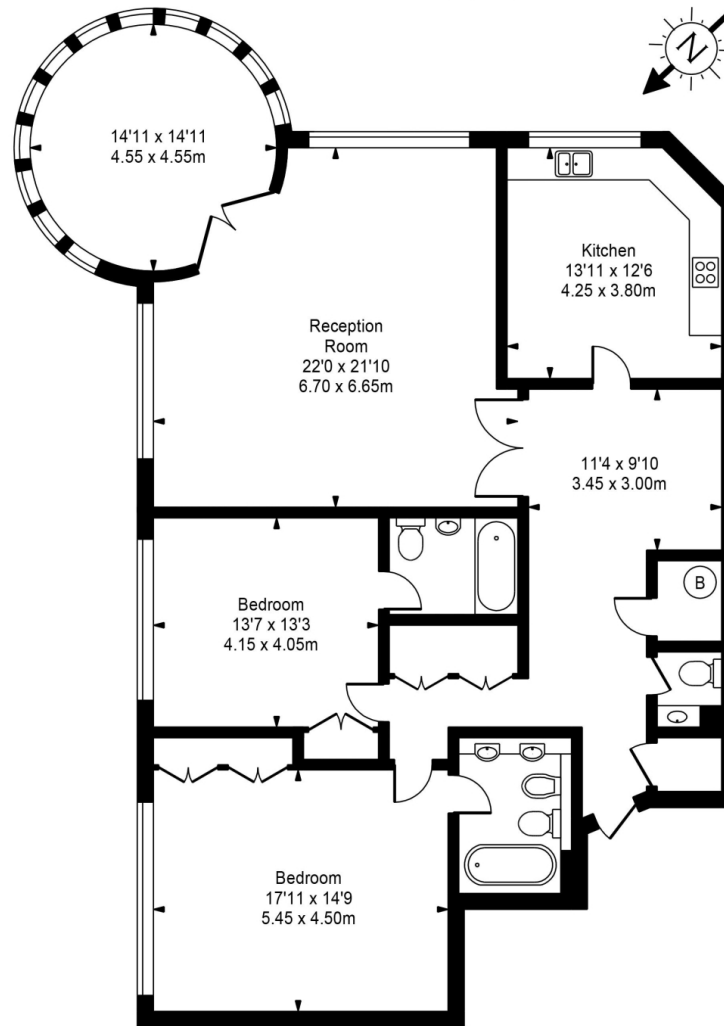








The Terraces



Approx Gross Internal Area 1791 Sq Ft - 166.38 Sq M



FOR ILLUSTRATIVE PURPOSES ONLY. NOT TO SCALE.

Whilst every attempt has been made to ensure the accuracy of the floorplan shown, all measurements, positioning, fixtures, fittings and any other data shown are an approximate interpretation for illustrative purposes only and are not to scale. No responsibility is taken for any error, omission, misstatement or use of data shown. Floor plan by www.bestangle.co.uk

Particulars

Property

Queens Terrace, St John's Wood, London, NW8
£1,250

Rooms

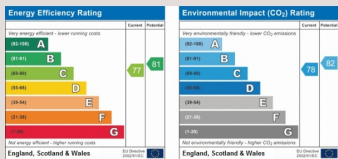


Features

- Less than a One Minute Walk from St John's Wood Underground
- First Floor with Lift Access
- Porter
- Available for Immediate Occupation

Information

Council Tax



Oliver Kent

oliver.kent@vitaproperties.uk
+4477 7274 0351



Scan for our website





T: +4420 7759 2199

E: enquiries@vitaproperties.uk

Disclaimer: These particulars are prepared as a general guide for prospective purchasers or tenants and do not constitute, nor constitute part of, an offer or contract. All statements, descriptions, and measurements contained herein are given in good faith and are believed to be correct at the time of printing, but any intending purchaser or tenant should not rely on them as statements or representations of fact and must satisfy themselves by inspection or otherwise as to their correctness. Floor plans and photographs are for illustrative purposes only and may not be to scale. The position and size of doors, windows, appliances, and other features are approximate. Anti-Money Laundering (AML): In line with the Money Laundering, Terrorist Financing and Transfer of Funds Regulations 2017, we are required to carry out customer due diligence checks. Buyers/tenants will be asked to provide proof of identity, address, and source of funds before a sale or rental can be agreed. Data Protection (GDPR): Personal information supplied to Vita Properties will be processed in accordance with the General Data Protection Regulation (GDPR). Your details may be retained for legitimate business purposes relating to property services. Full details of our Privacy Policy are available on request.

All rights reserved.