



Crossfield Road  
BELSIZE PARK, LONDON, NW3

£500



Available 06 March 2021 - Presenting this lovely two bedroom, two bathroom property in the heart of Swiss Cottage NW3!

Comprising of a well presented open-plan kitchen and living room with modern feature fireplace and a large bay window, master bedroom with an en-suite shower room and built in wardrobes, second single bedroom, family bathroom and small Juliette balcony off the master bedroom.

This property is ideally located for Swiss Cottage Station (Jubilee Line) and less than a 10 minute walk to Belsize Park Station (Northern Line).



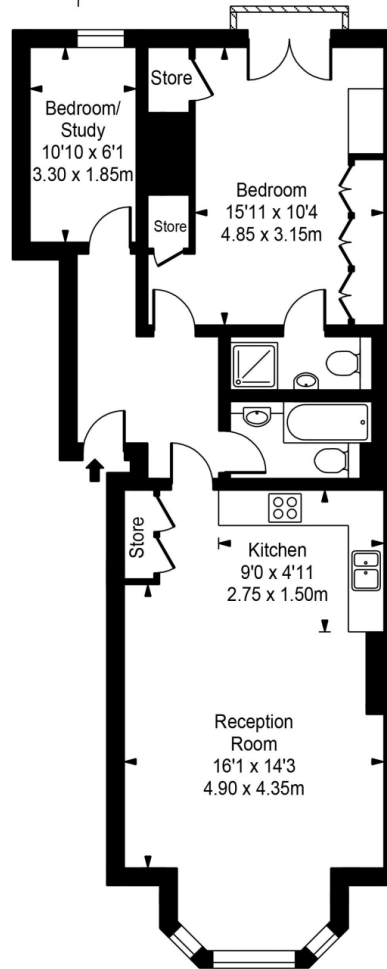
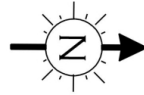








Crossfield Road



Approx Gross Internal Area 777 Sq Ft - 72.18 Sq M



FOR ILLUSTRATIVE PURPOSES ONLY. NOT TO SCALE.

Whilst every attempt has been made to ensure the accuracy of the floorplan shown, all measurements, positioning, fixtures, fittings and any other data shown are an approximate interpretation for illustrative purposes only and are not to scale. No responsibility is taken for any error, omission, misstatement or use of data shown. Floor plan by [www.bestangle.co.uk](http://www.bestangle.co.uk)

# Particulars

## Property

Crossfield Road, Belsize Park, London, NW3  
£500

## Rooms



1



2



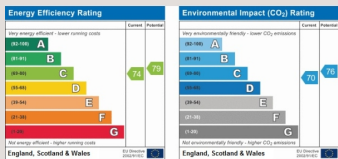
2

## Features

- Two Bed Apartment
- Raised Ground Floor
- Excellent Transport Links
- Open-Plan Living

## Information

Council Tax



Oliver Kent

oliver.kent@vitaproperties.uk  
+4477 7274 0351



Scan for our website





T: +4420 7759 2199

E: [enquiries@vitaproperties.uk](mailto:enquiries@vitaproperties.uk)

Disclaimer: These particulars are prepared as a general guide for prospective purchasers or tenants and do not constitute, nor constitute part of, an offer or contract. All statements, descriptions, and measurements contained herein are given in good faith and are believed to be correct at the time of printing, but any intending purchaser or tenant should not rely on them as statements or representations of fact and must satisfy themselves by inspection or otherwise as to their correctness. Floor plans and photographs are for illustrative purposes only and may not be to scale. The position and size of doors, windows, appliances, and other features are approximate. Anti-Money Laundering (AML): In line with the Money Laundering, Terrorist Financing and Transfer of Funds Regulations 2017, we are required to carry out customer due diligence checks. Buyers/tenants will be asked to provide proof of identity, address, and source of funds before a sale or rental can be agreed. Data Protection (GDPR): Personal information supplied to Vita Properties will be processed in accordance with the General Data Protection Regulation (GDPR). Your details may be retained for legitimate business purposes relating to property services. Full details of our Privacy Policy are available on request.

All rights reserved.