



Hamilton Terrace  
ST JOHNS WOOD, LONDON, NW8  
£1,400,000



We are delighted to offer this 1155 sq ft two bedroom apartment set on the first floor of this handsome red brick semi-detached Victorian house. This charming property exudes delightful traditional style, but also offers an incoming purchaser a great opportunity to create a fantastic modern apartment. The property benefits from bright and spacious accommodation, high ceilings, french windows, lots of light, a private balcony off the living room with views over the sweeping gardens to the rear and a further terrace overlooking Hamilton Terrace. Hamilton Terrace is one of North West London's most sought after locations, and a celebrated London address. The apartment is wonderfully positioned for the shopping facilities, cafes and restaurants of both St Johns Wood and Little Venice.

Closest stations are St Johns Wood (Jubilee line) and Maida Vale (Bakerloo line) and the superb open spaces of Regents Park (0.9 miles) and Hyde Park (1.8 miles)



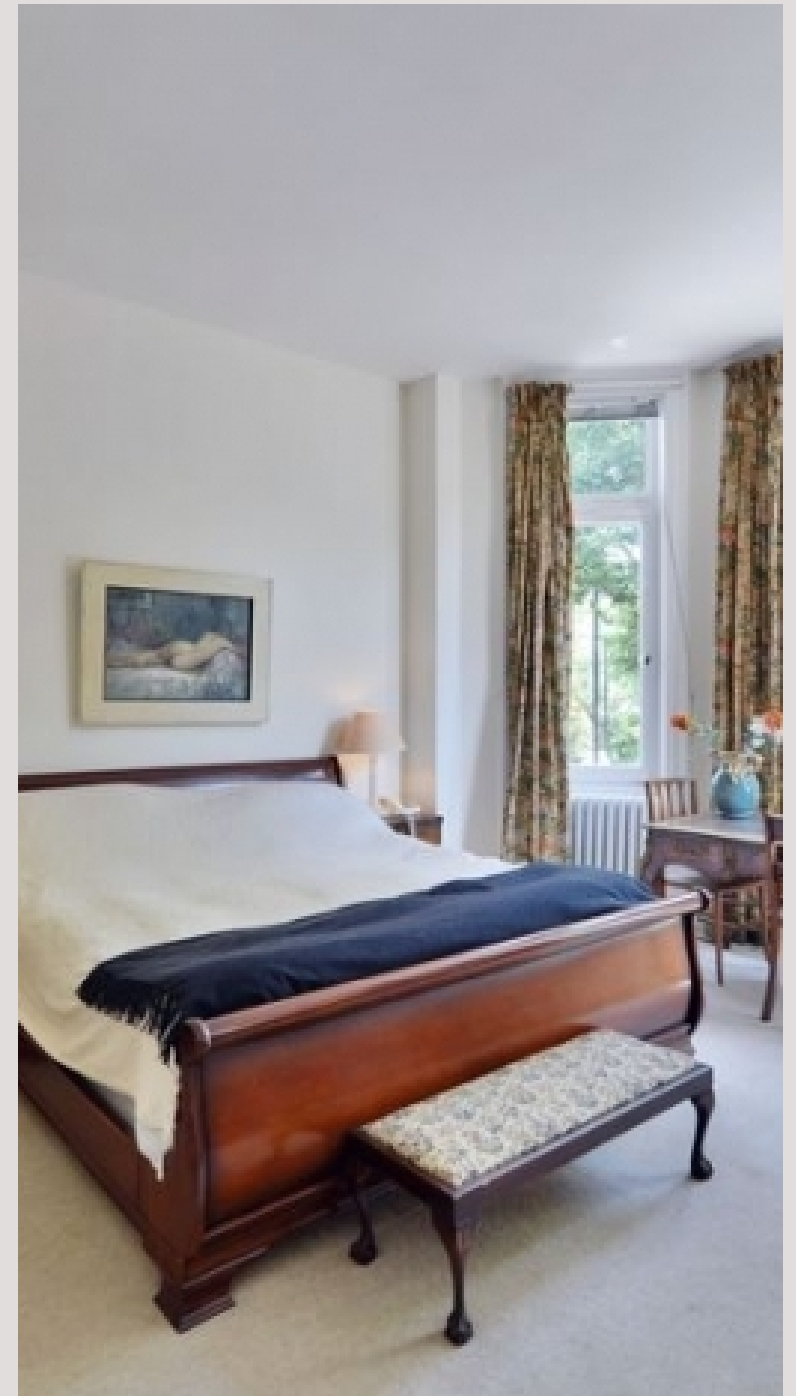


We are delighted to offer this 1155 sq ft two bedroom apartment set on the first floor of this handsome red brick semi-detached Victorian house. This charming property exudes delightful traditional style, but also offers an incoming purchaser a great opportunity to create a fantastic modern apartment. The property benefits from bright and spacious accommodation, high ceilings, french windows, lots of light, a private balcony off the living room with views over the sweeping gardens to the rear and a further terrace overlooking Hamilton Terrace. Hamilton Terrace is one of North West London's most sought after locations, and a celebrated London address. The apartment is wonderfully positioned for the shopping facilities, cafes and restaurants of both St Johns Wood and Little Venice.

Closest stations are St Johns Wood (Jubilee line) and Maida Vale (Bakerloo line) and the superb open spaces of Regents Park (0.9 miles) and Hyde Park (1.8 miles)







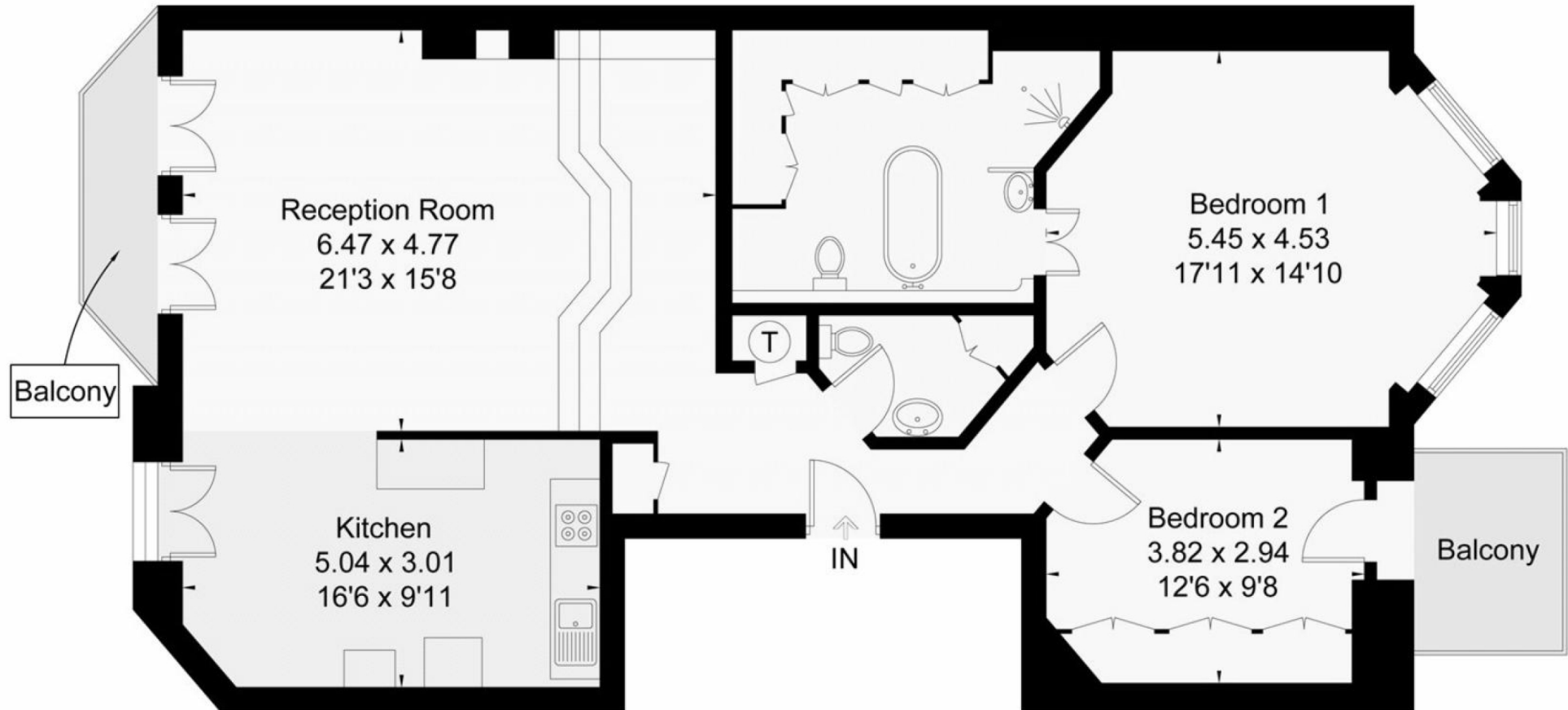
# Hamilton Terrace, NW8

Gross Internal Area (approx) = 107.3 sq m / 1155 sq ft

Balconies Areas = 7.5 sq m / 81 sq ft

For identification only. Not to scale.

© Floorplanz Ltd



First Floor

# Particulars

## Property

Hamilton Terrace, St Johns Wood, London, NW8  
£1,400,000

## Rooms



1



1



2

## Features

- Guest WC
- South facing balcony
- Open plan living
- Long lease

## Information

Council Tax



Oliver Kent

[oliver.kent@vitaproperties.uk](mailto:oliver.kent@vitaproperties.uk)  
+4477 7274 0351



Scan for our website





T: +4420 7759 2199  
E: [enquiries@vitaproperties.uk](mailto:enquiries@vitaproperties.uk)

Disclaimer: These particulars are prepared as a general guide for prospective purchasers or tenants and do not constitute, nor constitute part of, an offer or contract. All statements, descriptions, and measurements contained herein are given in good faith and are believed to be correct at the time of printing, but any intending purchaser or tenant should not rely on them as statements or representations of fact and must satisfy themselves by inspection or otherwise as to their correctness. Floor plans and photographs are for illustrative purposes only and may not be to scale. The position and size of doors, windows, appliances, and other features are approximate. Anti-Money Laundering (AML): In line with the Money Laundering, Terrorist Financing and Transfer of Funds Regulations 2017, we are required to carry out customer due diligence checks. Buyers/tenants will be asked to provide proof of identity, address, and source of funds before a sale or rental can be agreed. Data Protection (GDPR): Personal information supplied to Vita Properties will be processed in accordance with the General Data Protection Regulation (GDPR). Your details may be retained for legitimate business purposes relating to property services. Full details of our Privacy Policy are available on request.

All rights reserved.