



Hampstead Manor  
KIDDERPORE AVENUE, LONDON, NW3  
£975,000



A selection of one bed apartments in Hampstead newest development 'Hampstead Manor'.

Occupying a historic site just minutes from the heart of Hampstead Village and within easy reach of central London.

Consisting of part new build and part careful restoration project these beautiful apartments have been built with relaxation and tranquillity in mind.

Residents at Hampstead manor will get full use of the private spa, fully equipped private gym and swimming pool and also comes with the added security of a 24-hour concierge service.

A selection of one beds available starting from £950,000 - £1,275,000.

Photos are for example purposes only.





A selection of one bed apartments in Hampstead newest development 'Hampstead Manor'.

Occupying a historic site just minutes from the heart of Hampstead Village and within easy reach of central London.

Consisting of part new build and part careful restoration project these beautiful apartments have been built with relaxation and tranquillity in mind.

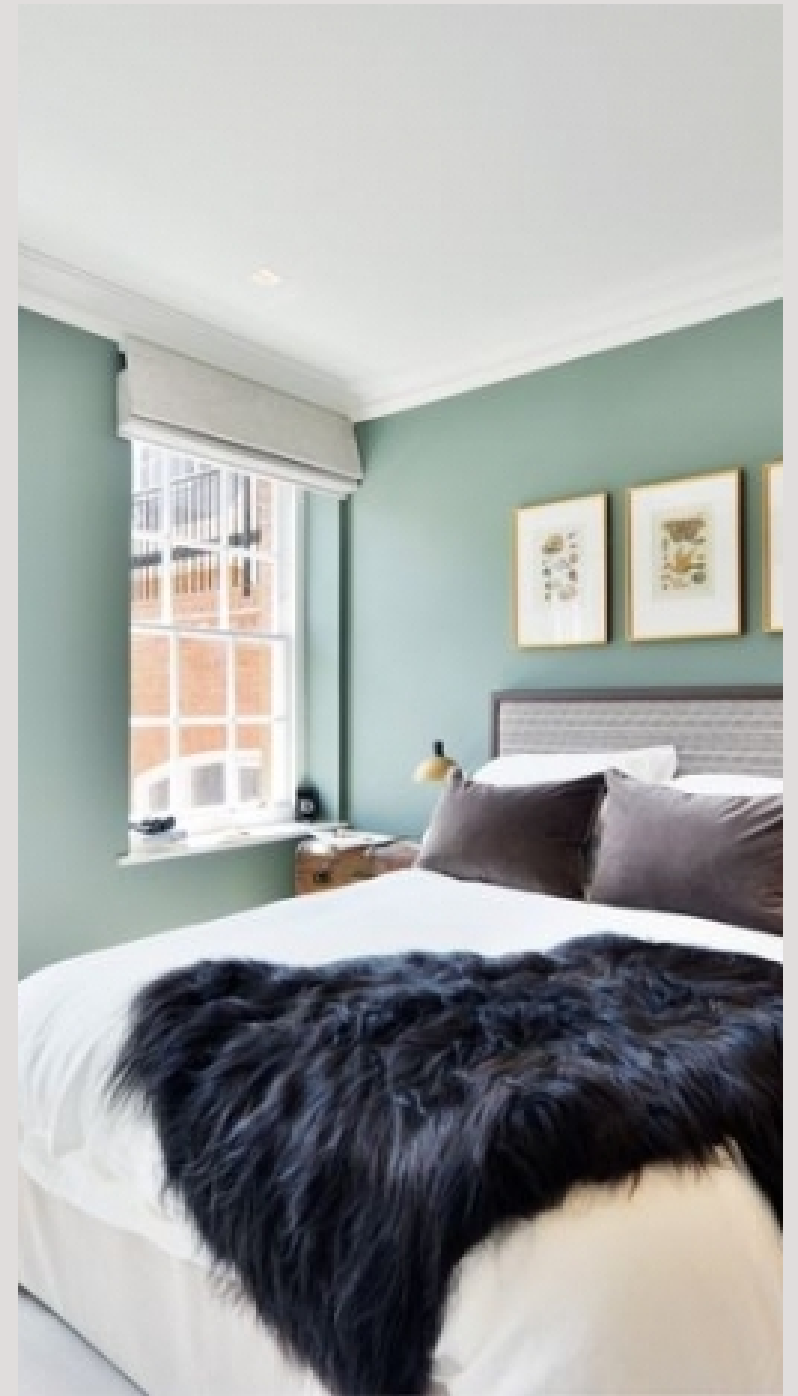
Residents at Hampstead manor will get full use of the private spa, fully equipped private gym and swimming pool and also comes with the added security of a 24-hour concierge service.

A selection of one beds available starting from £950,000 - £1,275,000.

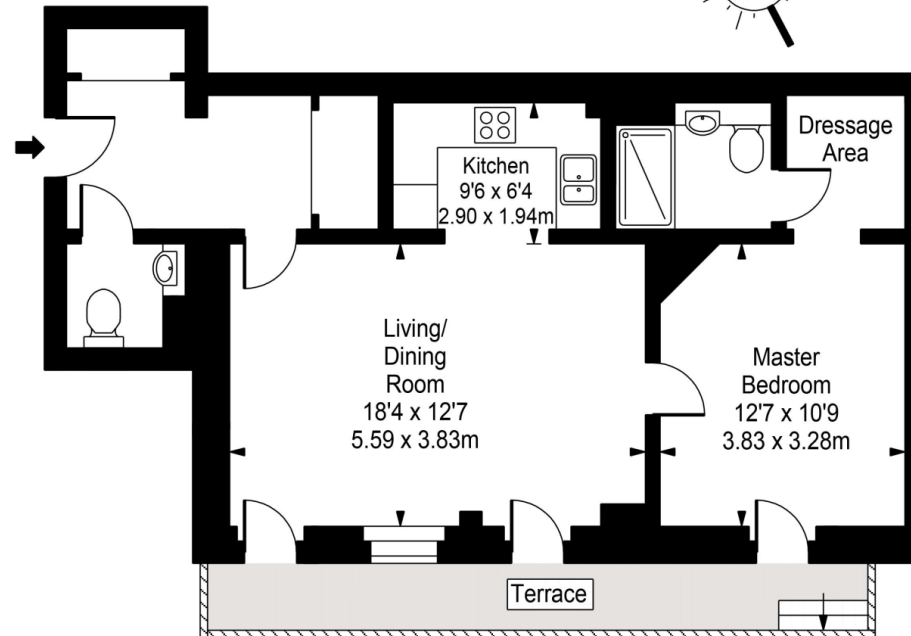
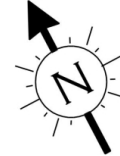
Photos are for example purposes only.







# Hampstead Manor



Ground Floor

Approx Gross Internal Area **664 Sq Ft - 61.69 Sq M**

FOR ILLUSTRATIVE PURPOSES ONLY. NOT TO SCALE.

Whilst every attempt has been made to ensure the accuracy of the floorplan shown, all measurements, positioning, fixtures, fittings and any other data shown are an approximate interpretation for illustrative purposes only and are not to scale. No responsibility is taken for any error, omission, misstatement or use of data shown.

Floor plan by [www.bestangle.co.uk](http://www.bestangle.co.uk)

# Particulars

## Property

Hampstead Manor, Kidderpore Avenue, London, NW3  
£975,000

## Rooms



## Features

- New Build
- Heart of Hampstead
- One Bed Apartments
- Many with Outside Space

## Information

Council Tax

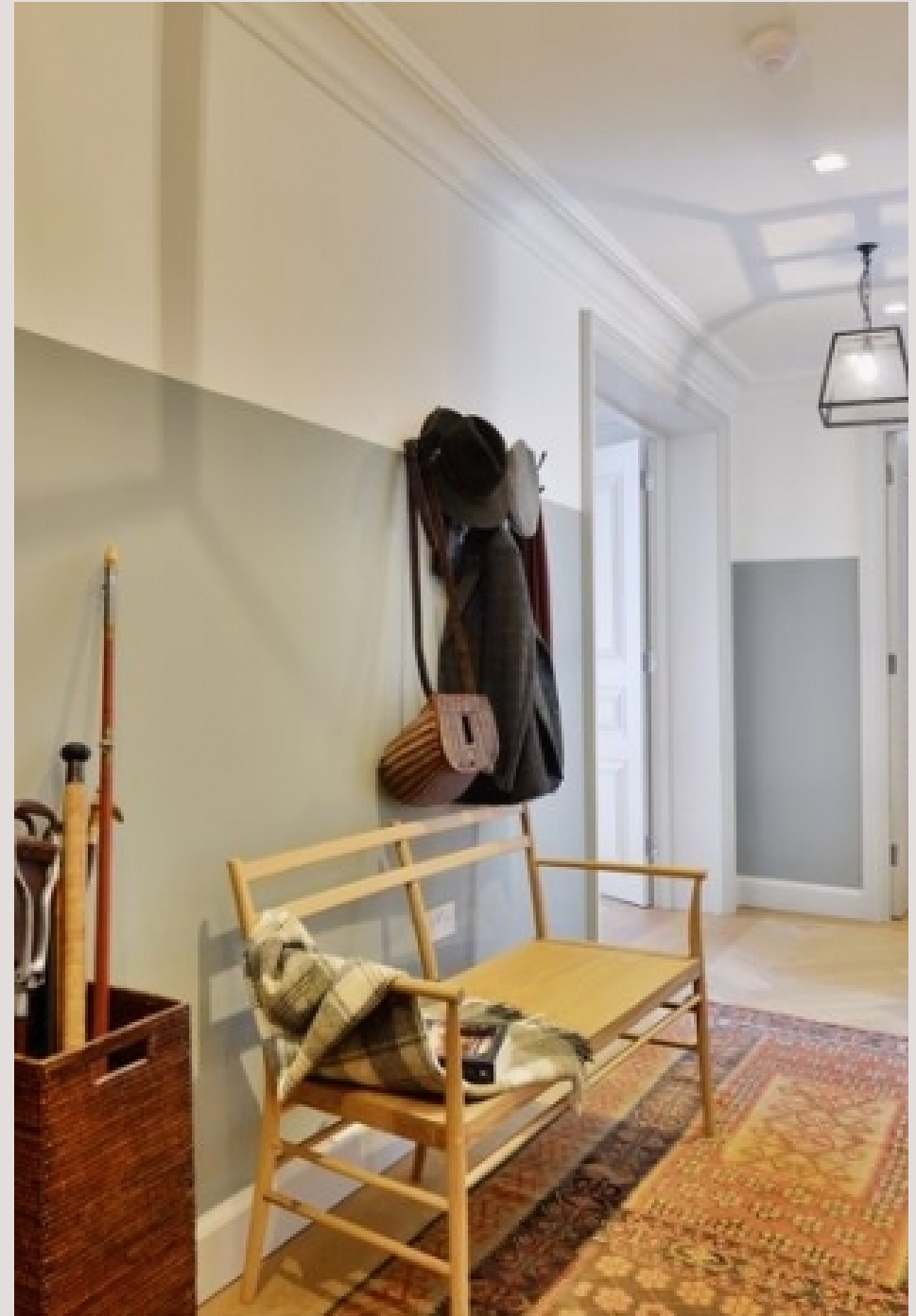


Oliver Kent

[oliver.kent@vitaproperties.uk](mailto:oliver.kent@vitaproperties.uk)  
+4477 7274 0351



Scan for our website





T: +4420 7759 2199

E: [enquiries@vitaproperties.uk](mailto:enquiries@vitaproperties.uk)

Disclaimer: These particulars are prepared as a general guide for prospective purchasers or tenants and do not constitute, nor constitute part of, an offer or contract. All statements, descriptions, and measurements contained herein are given in good faith and are believed to be correct at the time of printing, but any intending purchaser or tenant should not rely on them as statements or representations of fact and must satisfy themselves by inspection or otherwise as to their correctness. Floor plans and photographs are for illustrative purposes only and may not be to scale. The position and size of doors, windows, appliances, and other features are approximate. Anti-Money Laundering (AML): In line with the Money Laundering, Terrorist Financing and Transfer of Funds Regulations 2017, we are required to carry out customer due diligence checks. Buyers/tenants will be asked to provide proof of identity, address, and source of funds before a sale or rental can be agreed. Data Protection (GDPR): Personal information supplied to Vita Properties will be processed in accordance with the General Data Protection Regulation (GDPR). Your details may be retained for legitimate business purposes relating to property services. Full details of our Privacy Policy are available on request.

All rights reserved.