



## Fellows Road

BELSIZE PARK, LONDON, NW3

£1,100,000



Vita Properties are delighted to present this stunning two bed, garden flat.

This property has been completely renovated with the utmost care and attention.

A pure delight to the eyes this refurb perfectly blends contemporary, modern lines with timeless original character features.

Walking into the property you would never believe it was on the ground floor; clever architectural implements keep the property bright and airy throughout.

You enter into the spacious hallway, there is a small utility cupboard to your left and to your right you will find the master bedroom.

The master bedroom is of a lovely size with gorgeous large windows and spot lighting as well as an en-suite shower room.

Back down the hallway you come to the family bathroom which has been completely modernised with a stylish design.





Enter into the living space and this is where this clever refurb all comes together.

A sleek, crisp white, fully equipped kitchen meets exposed brickwork, original stone feature fireplace, sky lighting and whitewood floor creating this truly chic and eclectic living space.

Further through the house you have a good sized room currently being used as a client-facing office which connects onto the spectacular second bedroom which is constructed almost entirely of glass and offers access onto the garden.

This property offers both a front and back garden.

The front garden has a small private seating area and the back garden offers an large, well-manicured lawn and decking area.

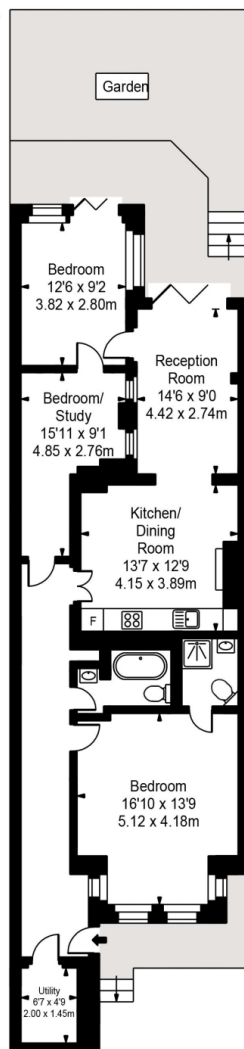








# Fellows Road



Approx Gross Internal Area 1115 Sq Ft - 103.59 Sq M



FOR ILLUSTRATIVE PURPOSES ONLY. NOT TO SCALE.  
Whilst every attempt has been made to ensure the accuracy of the floorplan shown, all measurements, positioning, fixtures, fittings and any other data shown are an approximate interpretation for illustrative purposes only and are not to scale. No responsibility is taken for any error, omission, misstatement or use of data shown.  
Floor plan by [www.bestangle.co.uk](http://www.bestangle.co.uk)

# Particulars

## Property

Fellows Road, Belsize Park, London, NW3  
£1,100,000

## Rooms



1



2



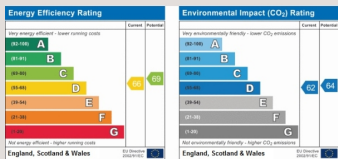
2

## Features

- Private garden
- Private entrance
- Refurbished to an excellent standard
- Two double bedrooms

## Information

Council Tax

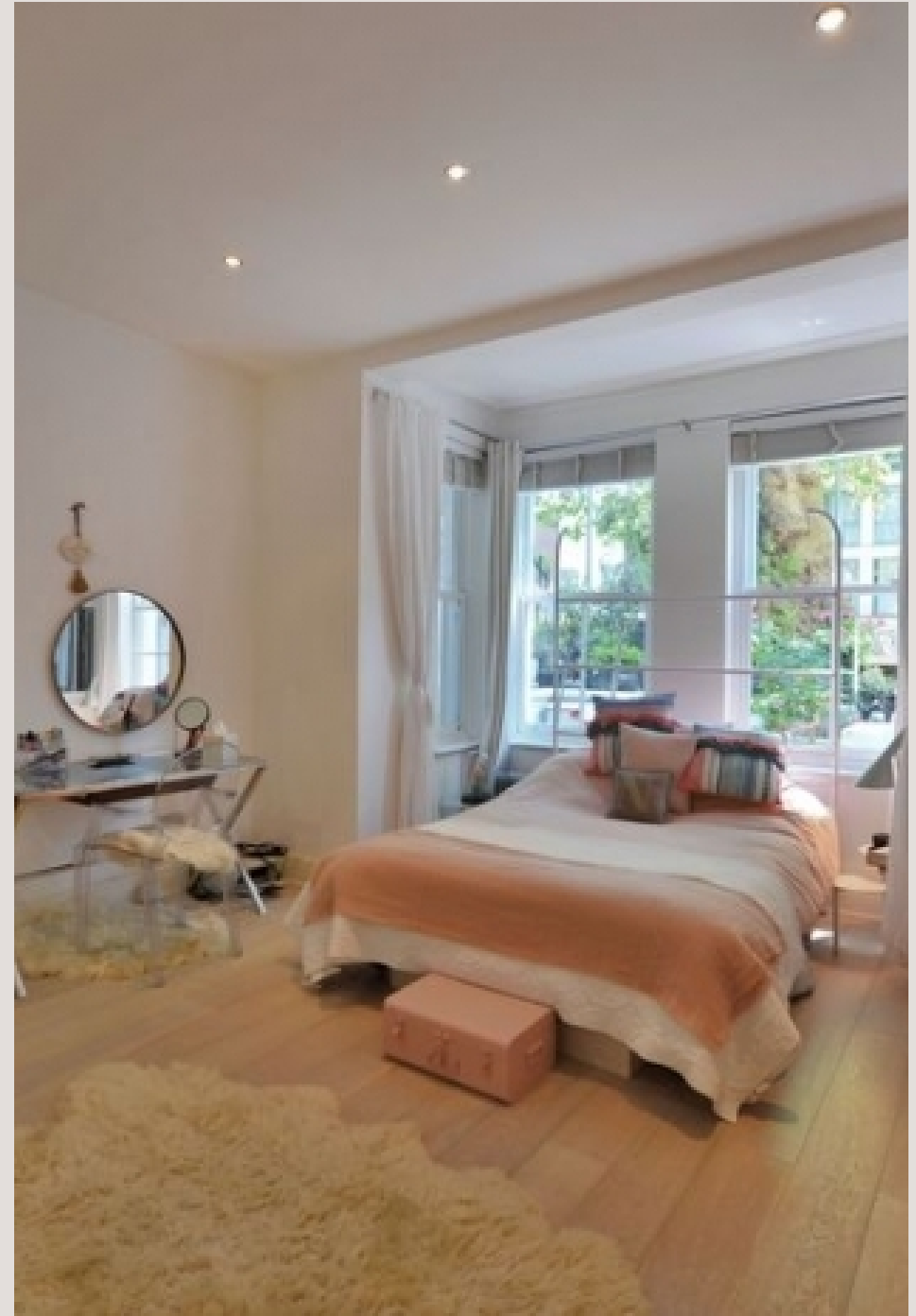


Oliver Kent

oliver.kent@vitaproperties.uk  
+4477 7274 0351



Scan for our website





T: +4420 7759 2199  
E: [enquiries@vitaproperties.uk](mailto:enquiries@vitaproperties.uk)

Disclaimer: These particulars are prepared as a general guide for prospective purchasers or tenants and do not constitute, nor constitute part of, an offer or contract. All statements, descriptions, and measurements contained herein are given in good faith and are believed to be correct at the time of printing, but any intending purchaser or tenant should not rely on them as statements or representations of fact and must satisfy themselves by inspection or otherwise as to their correctness. Floor plans and photographs are for illustrative purposes only and may not be to scale. The position and size of doors, windows, appliances, and other features are approximate. Anti-Money Laundering (AML): In line with the Money Laundering, Terrorist Financing and Transfer of Funds Regulations 2017, we are required to carry out customer due diligence checks. Buyers/tenants will be asked to provide proof of identity, address, and source of funds before a sale or rental can be agreed. Data Protection (GDPR): Personal information supplied to Vita Properties will be processed in accordance with the General Data Protection Regulation (GDPR). Your details may be retained for legitimate business purposes relating to property services. Full details of our Privacy Policy are available on request.

All rights reserved.