



Templewood Avenue
HAMPSTEAD, LONDON, NW3

£810



Available Now - A beautifully presented 2 bedroomed detached coach house set over 2 floors and located in one of Hampstead's premier thoroughfares.

The property comprises: spacious reception room with wooden floors, galleried study area/play area overlooking the reception room, kitchen/breakfast area, double bedroom with fitted wardrobes, single bedroom, luxury bathroom, small patio area & use of beautiful communal gardens.

Furthermore, the house benefits from an off street parking space



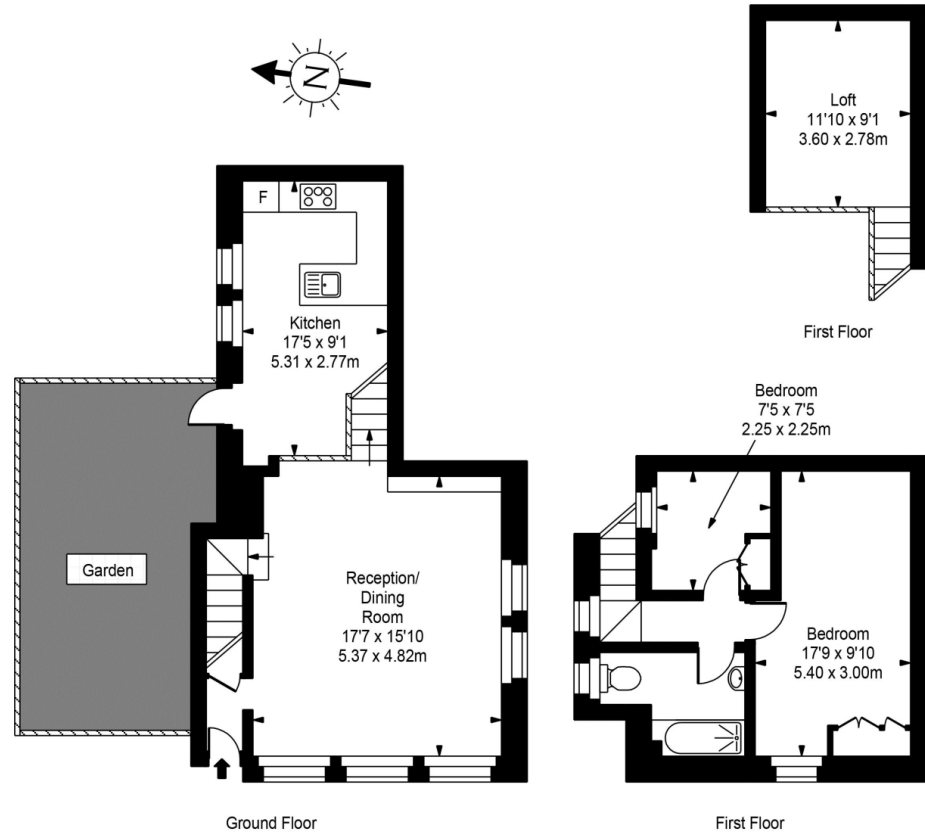








Coach House



Approx Gross Internal Area **938 Sq Ft - 87.14 Sq M**

For Illustration Purposes Only - Not To Scale
Floor plan by www.bestangle.co.uk

Particulars

Property

Templewood Avenue, Hampstead, London, NW3
£810

Rooms

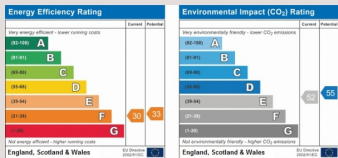


Features

- Use of beautiful communal gardens
- Modern
- Coach house
- Fully fitted eat in kitchen plus a study area

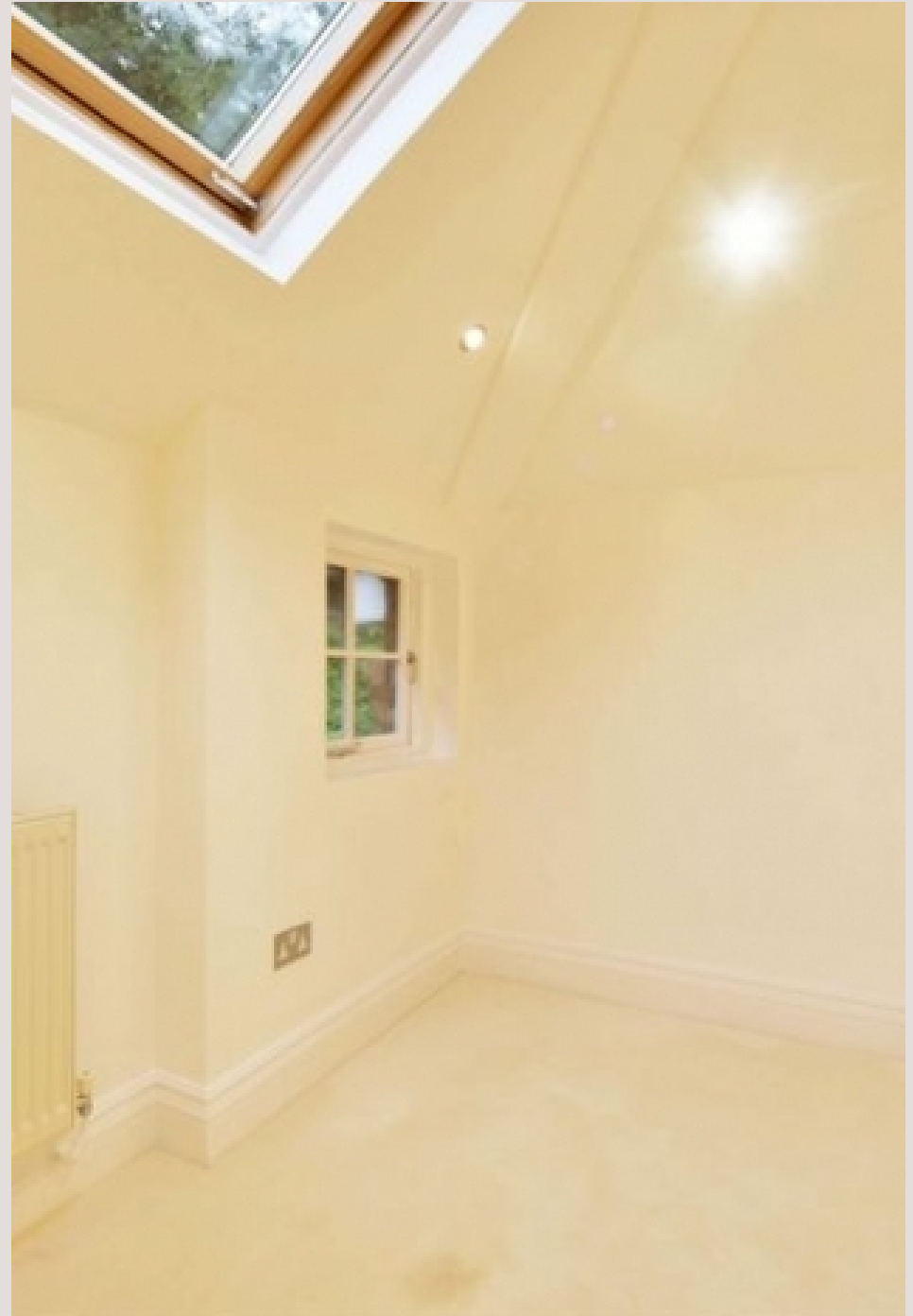
Information

Council Tax



Oliver Kent

oliver.kent@vitaproperties.uk
+4477 7274 0351



Scan for our website





T: +4420 7759 2199

E: enquiries@vitaproperties.uk

Disclaimer: These particulars are prepared as a general guide for prospective purchasers or tenants and do not constitute, nor constitute part of, an offer or contract. All statements, descriptions, and measurements contained herein are given in good faith and are believed to be correct at the time of printing, but any intending purchaser or tenant should not rely on them as statements or representations of fact and must satisfy themselves by inspection or otherwise as to their correctness. Floor plans and photographs are for illustrative purposes only and may not be to scale. The position and size of doors, windows, appliances, and other features are approximate. Anti-Money Laundering (AML): In line with the Money Laundering, Terrorist Financing and Transfer of Funds Regulations 2017, we are required to carry out customer due diligence checks. Buyers/tenants will be asked to provide proof of identity, address, and source of funds before a sale or rental can be agreed. Data Protection (GDPR): Personal information supplied to Vita Properties will be processed in accordance with the General Data Protection Regulation (GDPR). Your details may be retained for legitimate business purposes relating to property services. Full details of our Privacy Policy are available on request.

All rights reserved.