



## Westfield Lodge

302 FINCHLEY ROAD, HAMPSTEAD, LONDON, NW3

£450



Available July 19th - Set within this gated development with 24hr portorage is this larger than average 1 bedroom 1 bathroom apartment on the top floor of this prestigious apartment block in Hampstead.

Accommodation comprising master bedroom with fitted wardrobes, a spacious reception room, a fully fitted kitchen and access to communal gardens.

Property benefits from being secondary glazed throughout, leisure facilities including swimming pool and gym and an allocated under ground parking space.

Offered on a part furnished basis





Available July 19th - Set within this gated development with 24hr portage is this larger than average 1 bedroom 1 bathroom apartment on the top floor of this prestigious apartment block in Hampstead.

Accommodation comprising master bedroom with fitted wardrobes, a spacious reception room, a fully fitted kitchen and access to communal gardens.

Property benefits from being secondary glazed throughout, leisure facilities including swimming pool and gym and an allocated under ground parking space.

Offered on a part furnished basis

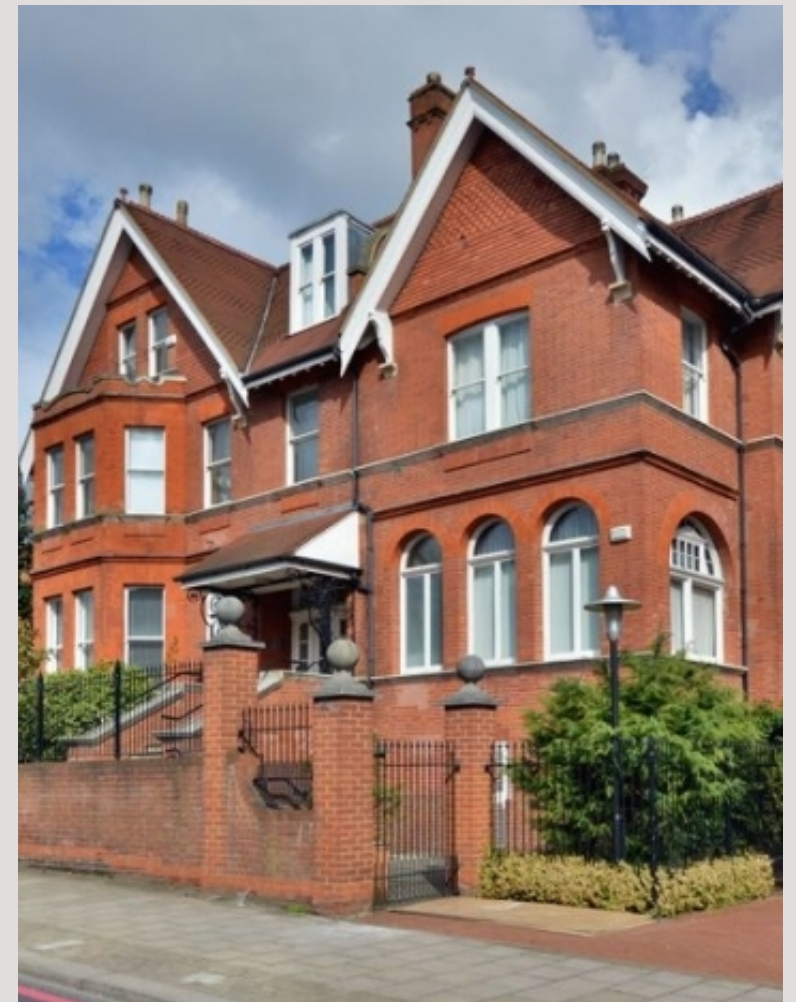




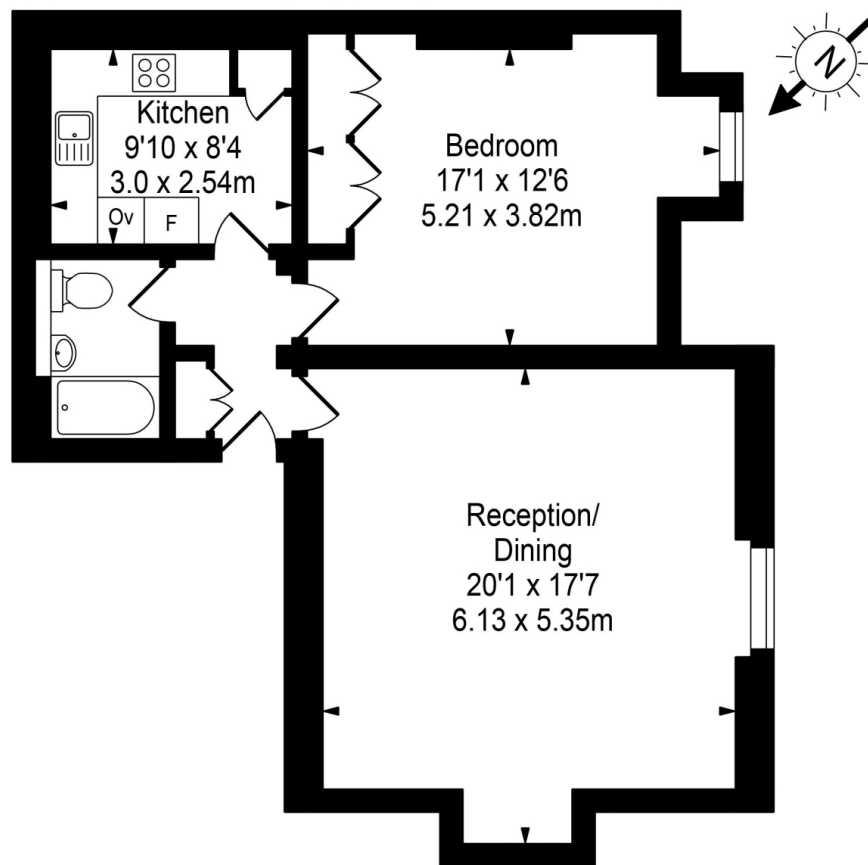




Scan for out video walkthrough



# Westfield Lodge



Second Floor



Approx Gross Internal Area 717 Sq Ft - 66.67 Sq M

FOR ILLUSTRATIVE PURPOSES ONLY. NOT TO SCALE.

Whilst every attempt has been made to ensure the accuracy of the floorplan shown, all measurements, positioning, fixtures, fittings and any other data shown are an approximate interpretation for illustrative purposes only and are not to scale. No responsibility is taken for any error, omission, miss-statement or use of data shown.

Floor plan by [www.bestangle.co.uk](http://www.bestangle.co.uk)

# Particulars

## Property

Westfield Lodge, 302 Finchley Road, Hampstead, London,  
~~£450~~

## Rooms



## Features

- 24 hr portorage
- Allocated underground parking
- Access to the onsite gym, swimming pool, jacuzzi and sauna
- Secondary glazed throughout

## Information

Council Tax



Oliver Kent

[oliver.kent@vitaproperties.uk](mailto:oliver.kent@vitaproperties.uk)  
+4477 7274 0351



Scan for our website





T: +4420 7759 2199

E: [enquiries@vitaproperties.uk](mailto:enquiries@vitaproperties.uk)

Disclaimer: These particulars are prepared as a general guide for prospective purchasers or tenants and do not constitute, nor constitute part of, an offer or contract. All statements, descriptions, and measurements contained herein are given in good faith and are believed to be correct at the time of printing, but any intending purchaser or tenant should not rely on them as statements or representations of fact and must satisfy themselves by inspection or otherwise as to their correctness. Floor plans and photographs are for illustrative purposes only and may not be to scale. The position and size of doors, windows, appliances, and other features are approximate. Anti-Money Laundering (AML): In line with the Money Laundering, Terrorist Financing and Transfer of Funds Regulations 2017, we are required to carry out customer due diligence checks. Buyers/tenants will be asked to provide proof of identity, address, and source of funds before a sale or rental can be agreed. Data Protection (GDPR): Personal information supplied to Vita Properties will be processed in accordance with the General Data Protection Regulation (GDPR). Your details may be retained for legitimate business purposes relating to property services. Full details of our Privacy Policy are available on request.

All rights reserved.