



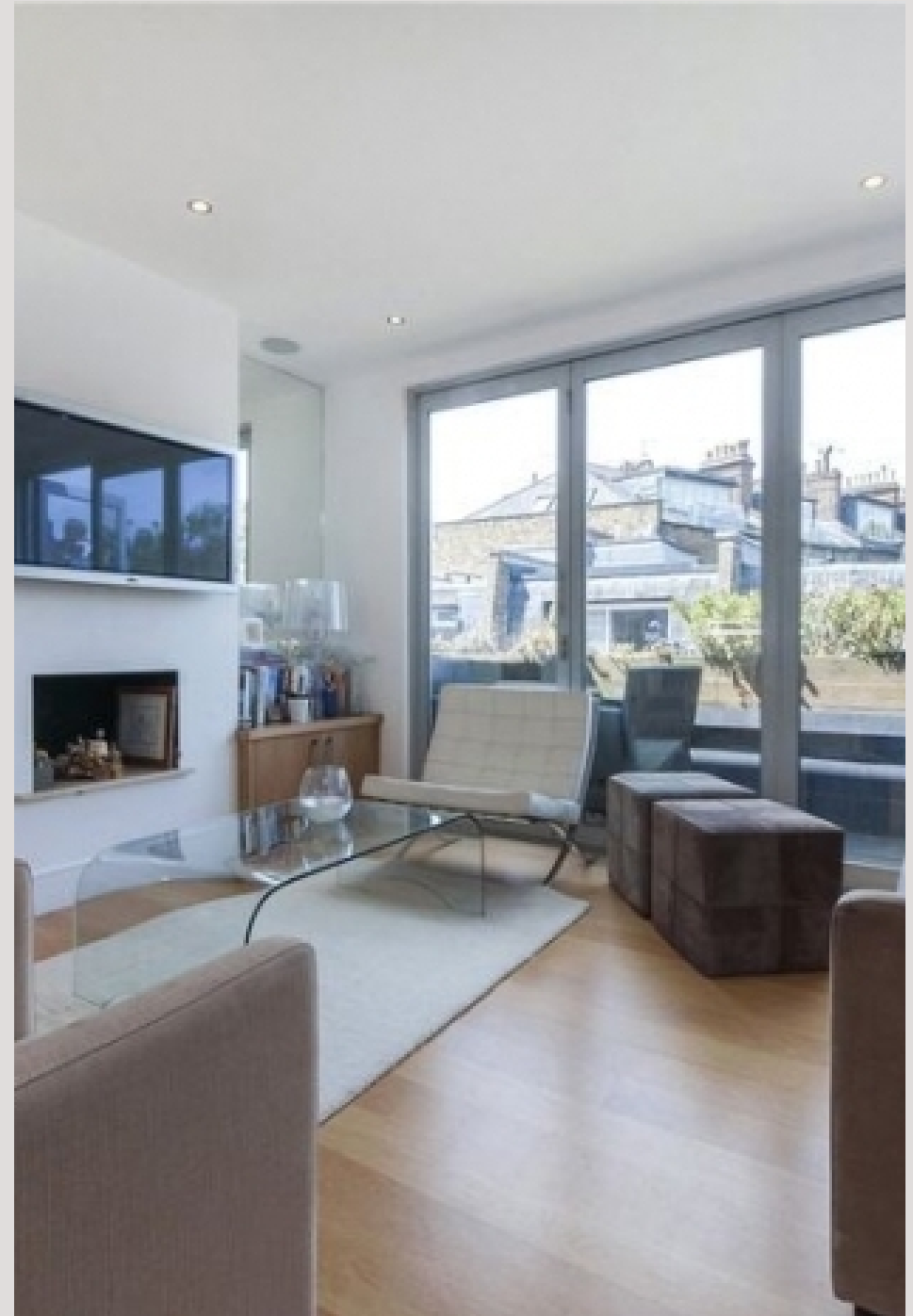
Elizabeth Mews  
BELSIZE PARK, LONDON, NW3

£795



A charming three bedroom mews house set on an idyllic cobbled stone street. This property has been lovingly refurbished to the highest of standards and boasts gorgeous wooden floors in living spaces, carpets in bedrooms, a private balcony, and an abundance of cleverly implemented storage solutions.

Within a few minutes walking distance of Belsize Park Underground Station & Chalk Farm Underground Station and all the local amenities.





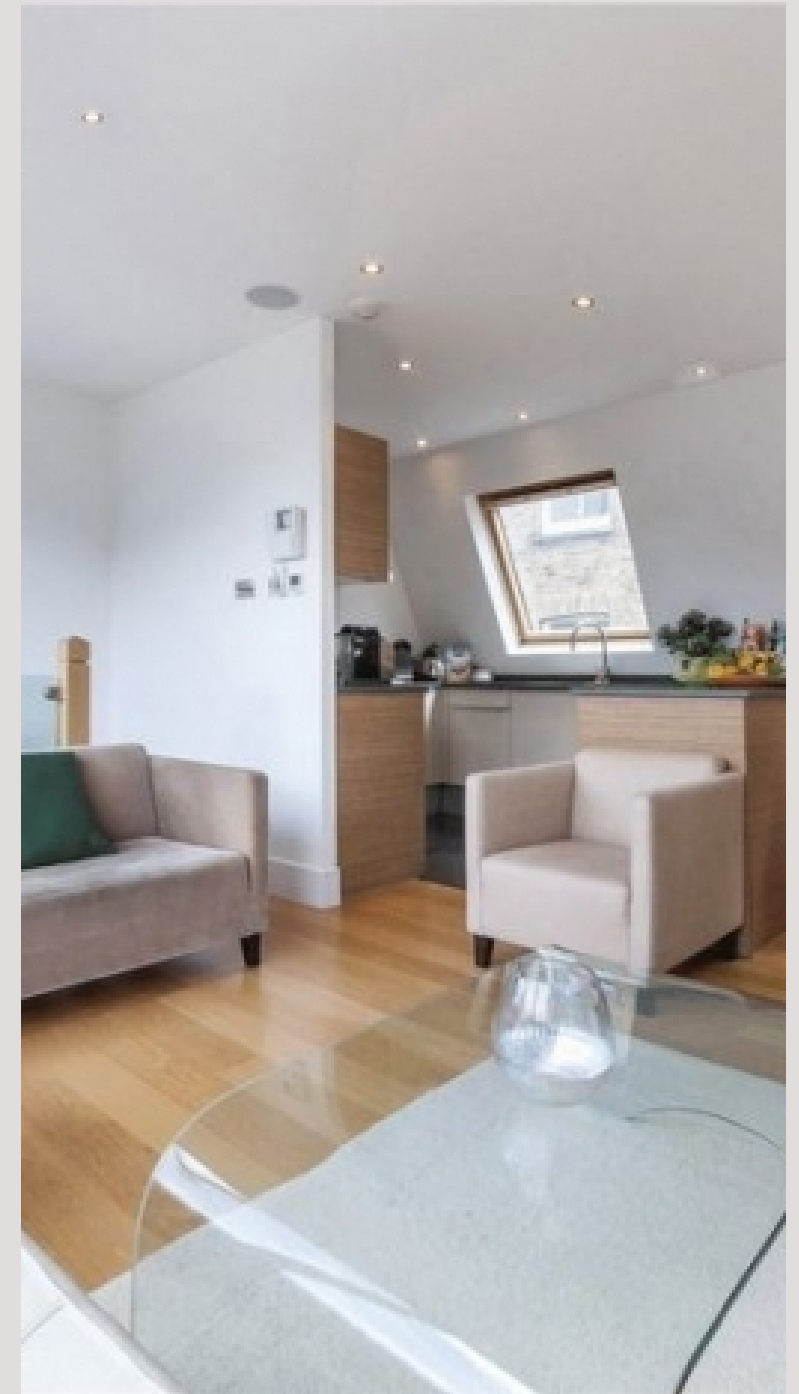
A charming three bedroom mews house set on an idyllic cobbled stone street. This property has been lovingly refurbished to the highest of standards and boasts gorgeous wooden floors in living spaces, carpets in bedrooms, a private balcony, and an abundance of cleverly implemented storage solutions.

Within a few minutes walking distance of Belsize Park Underground Station & Chalk Farm Underground Station and all the local amenities.

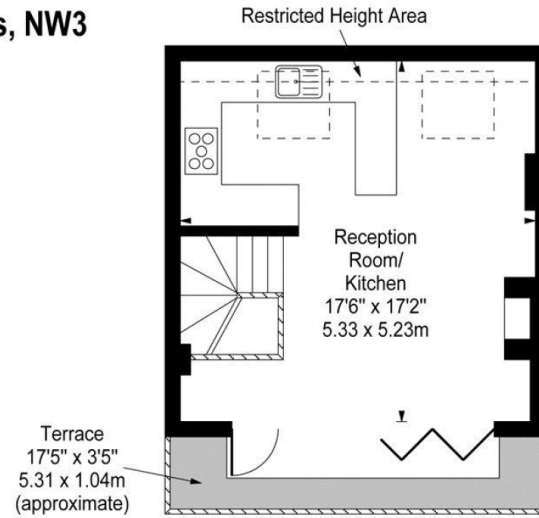




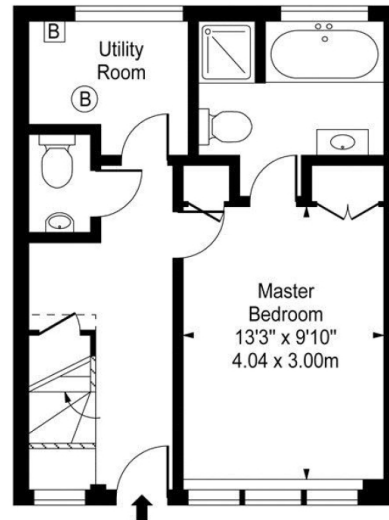




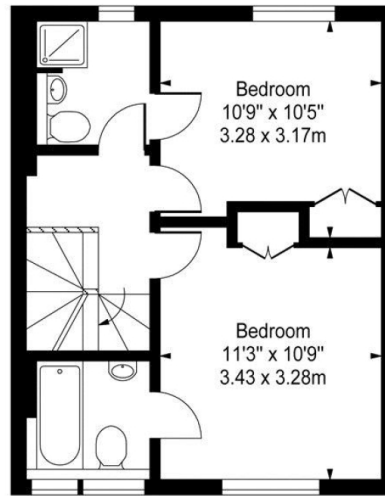
# Elizabeth Mews, NW3



Second Floor



Ground Floor



First Floor

Approx Gross Internal Area **1070 Sq Ft - 99.40 Sq M**  
(Including Restricted Height Area)

For Illustration Purposes Only - Not To Scale

[www.goldlens.co.uk](http://www.goldlens.co.uk)

Prepared for Chestertons

Ref. No. 005508J

# Particulars

## Property

Elizabeth Mews, Belsize Park, London, NW3  
£795

## Rooms



1



2



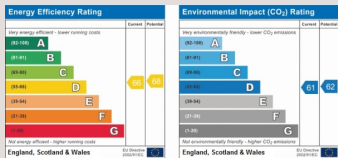
3

## Features

- Charming Mews House
- Private Balcony
- Ideally Situated
- Recently Refurbished

## Information

Council Tax



Oliver Kent

oliver.kent@vitaproperties.uk  
+4477 7274 0351



Scan for our website





T: +4420 7759 2199

E: [enquiries@vitaproperties.uk](mailto:enquiries@vitaproperties.uk)

Disclaimer: These particulars are prepared as a general guide for prospective purchasers or tenants and do not constitute, nor constitute part of, an offer or contract. All statements, descriptions, and measurements contained herein are given in good faith and are believed to be correct at the time of printing, but any intending purchaser or tenant should not rely on them as statements or representations of fact and must satisfy themselves by inspection or otherwise as to their correctness. Floor plans and photographs are for illustrative purposes only and may not be to scale. The position and size of doors, windows, appliances, and other features are approximate. Anti-Money Laundering (AML): In line with the Money Laundering, Terrorist Financing and Transfer of Funds Regulations 2017, we are required to carry out customer due diligence checks. Buyers/tenants will be asked to provide proof of identity, address, and source of funds before a sale or rental can be agreed. Data Protection (GDPR): Personal information supplied to Vita Properties will be processed in accordance with the General Data Protection Regulation (GDPR). Your details may be retained for legitimate business purposes relating to property services. Full details of our Privacy Policy are available on request.

All rights reserved.