



Westfield

KIDDERPORE AVENUE, LONDON, NW3

£975,000



Situated on the second floor of this highly sought-after Hampstead development is this spacious two/three double bedroom, two bathroom apartment featuring a private terrace spanning the width of the apartment, overlooking fountains and immaculately landscaped communal gardens.

The apartment also enjoys the use of a private secure underground parking space.

Benefits include a 24 hour concierge, vast communal gardens, communal gymnasium and swimming pool facilities and lift access.

Accommodation & Amenities:





Master Bedroom With Ensuite Bathroom, Two Further Double Bedrooms, Family Bathroom, Kitchen, Reception Room, Private Terrace, Secure Parking Space, Lift, Concierge, Communal Gymnasium & Swimming Pool, Communal Gardens.

Westfield is a sought after contemporary development with outstanding resident's facilities including indoor swimming pool, gymnasium, extensive communal gardens, lift, 24 hour uniformed porterage and underground parking. Located on Kidderpore Avenue all local facilities are within easy access including Hampstead High Street, Hampstead Heath and the O2 Centre on Finchley Road



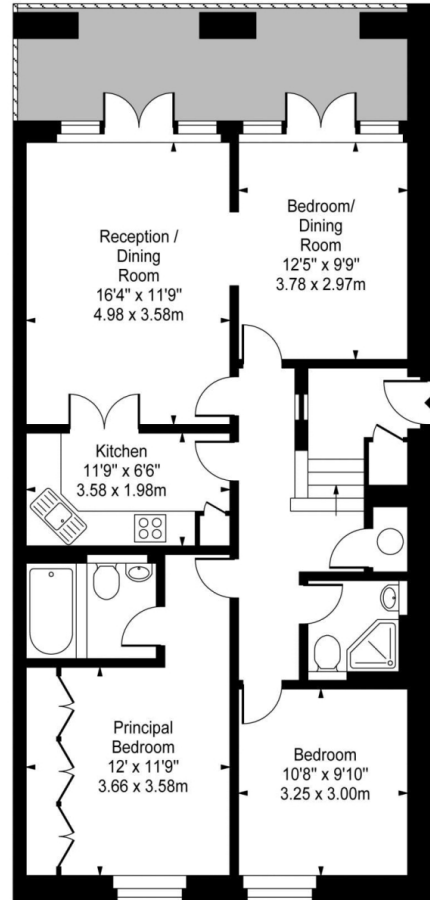








**Westfield,
Kidderpore Avenue, NW3**



Second Floor

Approx Gross Internal Area 941 Sq Ft - 87.42 Sq M

For Illustration Purposes Only - Not To Scale Floor Plan by www.nogaphotostudio.com Ref: No.35851

This floor plan should be used as a general outline for guidance only. Any intending purchaser or lessee should satisfy themselves by inspection, searches, enquiries and full survey as to the correctness of each statement. Any areas, measurements or distances quoted are approximate and should not be used to value a property or be the basis of any sale or let.

Particulars

Property

Westfield, Kidderpore Avenue, London, NW3
£975,000

Rooms



2



2



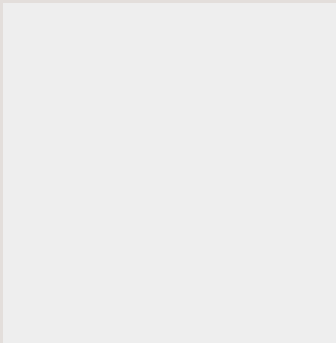
2

Features

- 24 Hour Porter
- Two Receptions
- Two Balconies
- Swimming Pool

Information

Council Tax



Oliver Kent

oliver.kent@vitaproperties.uk
+4477 7274 0351



Scan for our website





T: +4420 7759 2199

E: enquiries@vitaproperties.uk

Disclaimer: These particulars are prepared as a general guide for prospective purchasers or tenants and do not constitute, nor constitute part of, an offer or contract. All statements, descriptions, and measurements contained herein are given in good faith and are believed to be correct at the time of printing, but any intending purchaser or tenant should not rely on them as statements or representations of fact and must satisfy themselves by inspection or otherwise as to their correctness. Floor plans and photographs are for illustrative purposes only and may not be to scale. The position and size of doors, windows, appliances, and other features are approximate. Anti-Money Laundering (AML): In line with the Money Laundering, Terrorist Financing and Transfer of Funds Regulations 2017, we are required to carry out customer due diligence checks. Buyers/tenants will be asked to provide proof of identity, address, and source of funds before a sale or rental can be agreed. Data Protection (GDPR): Personal information supplied to Vita Properties will be processed in accordance with the General Data Protection Regulation (GDPR). Your details may be retained for legitimate business purposes relating to property services. Full details of our Privacy Policy are available on request.

All rights reserved.