



Maresfield Gardens  
HAMPSTEAD, LONDON, NW3

£1,150,000



An extraordinary two-bedroom apartment, found in a impressive period building, on a charming residential road.

The property is centrally located for the vast array of amenities and transport links of Finchley Road (Jubilee & MET Line).

Added benefits include, a well-manicured communal gardens and garage with an allocated parking space.

The apartment has undergone a complete renovation including architecturally designed kitchen, bathrooms and floors throughout.

Comprising of a large open-plan living and dining space; boasting beautifully high ceilings, large bay windows, private balcony and uninterrupted views across the communal gardens.

The master bedroom is a great size and offers a walk-in wardrobe and en-suite shower room.

The second bedroom faces West and is lovely and bright.

It is near equal in size to the master and also offers garden views

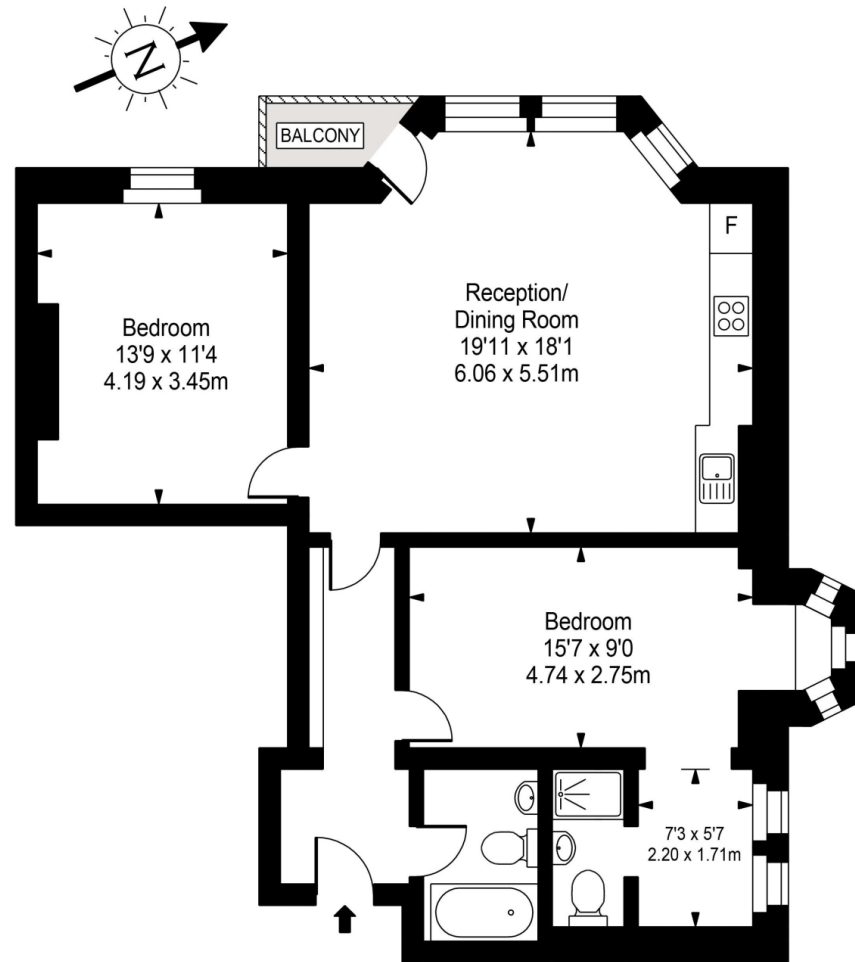












### Raised Ground Floor



Approx Gross Internal Area **948 Sq Ft - 88.07 Sq M**

FOR ILLUSTRATIVE PURPOSES ONLY. NOT TO SCALE.

Whilst every attempt has been made to ensure the accuracy of the floorplan shown, all measurements, positioning, fixtures, fittings and any other data shown are an approximate interpretation for illustrative purposes only and are not to scale. No responsibility is taken for any error, omission, miss-statement or use of data shown. Floor plan by [www.bestangle.co.uk](http://www.bestangle.co.uk)

# Particulars

## Property

Maresfield Gardens, Hampstead, London, NW3  
£1,150,000

## Rooms

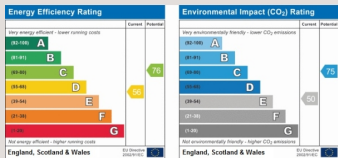


## Features

- Communal gardens
- An allocated garage
- Service charge Includes heating and hot water
- Brand new lease

## Information

Council Tax

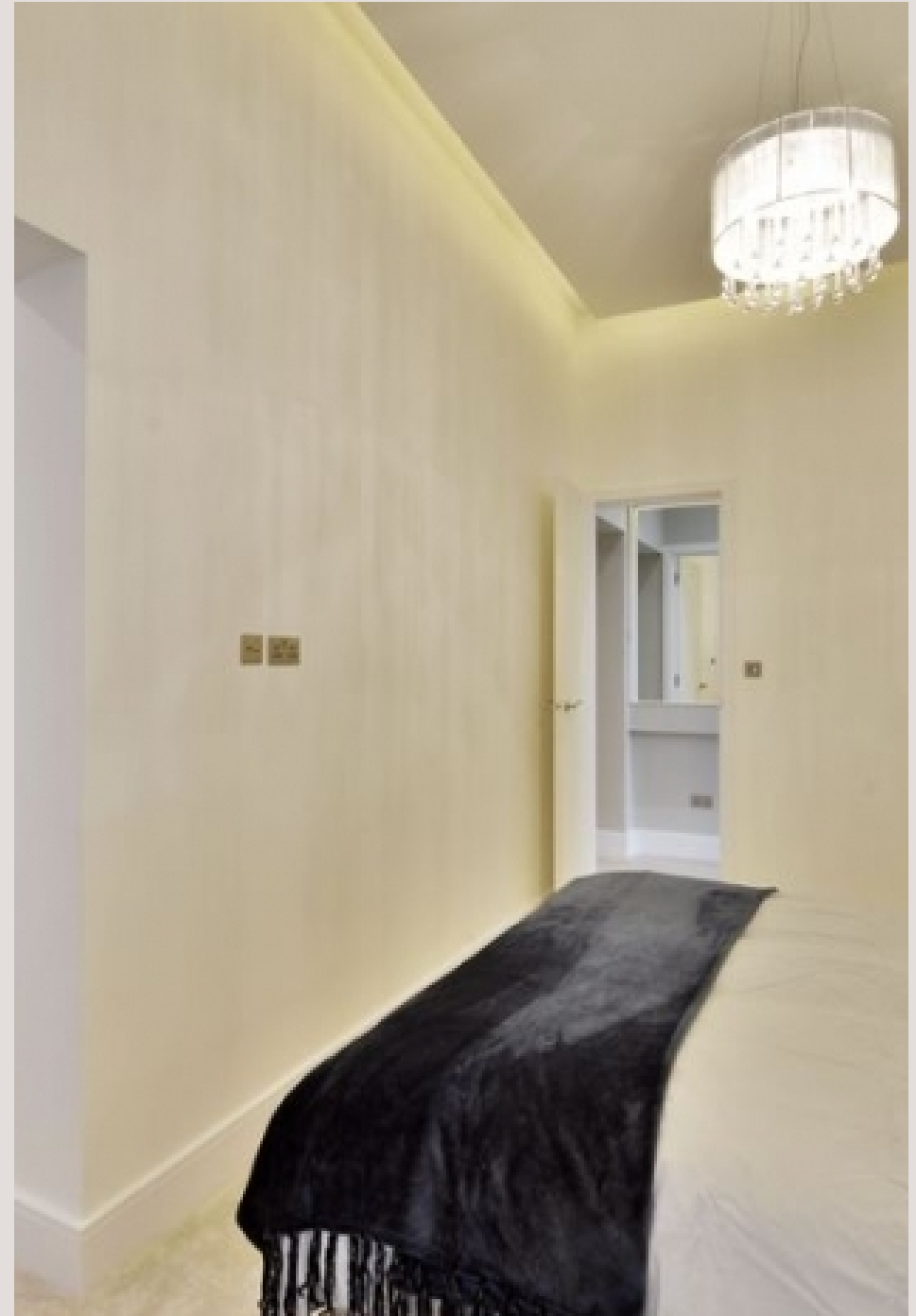


Oliver Kent

oliver.kent@vitaproperties.uk  
+4477 7274 0351



Scan for our website





T: +4420 7759 2199  
E: [enquiries@vitaproperties.uk](mailto:enquiries@vitaproperties.uk)

Disclaimer: These particulars are prepared as a general guide for prospective purchasers or tenants and do not constitute, nor constitute part of, an offer or contract. All statements, descriptions, and measurements contained herein are given in good faith and are believed to be correct at the time of printing, but any intending purchaser or tenant should not rely on them as statements or representations of fact and must satisfy themselves by inspection or otherwise as to their correctness. Floor plans and photographs are for illustrative purposes only and may not be to scale. The position and size of doors, windows, appliances, and other features are approximate. Anti-Money Laundering (AML): In line with the Money Laundering, Terrorist Financing and Transfer of Funds Regulations 2017, we are required to carry out customer due diligence checks. Buyers/tenants will be asked to provide proof of identity, address, and source of funds before a sale or rental can be agreed. Data Protection (GDPR): Personal information supplied to Vita Properties will be processed in accordance with the General Data Protection Regulation (GDPR). Your details may be retained for legitimate business purposes relating to property services. Full details of our Privacy Policy are available on request.

All rights reserved.