



Whittlebury Mews East

PRIMROSE HILL, LONDON, NW1

£1,850,000



Introducing an exquisite three-bedroom mews house with underground parking, located within a boutique collection of modern residences in the highly sought-after Primrose Hill area. This stylish home presents a contemporary design, offering spacious open-plan living within a secure gated community.

As you step into the house on the ground floor, you are welcomed by a generously sized entrance hallway featuring a convenient guest cloakroom. The ground floor also encompasses a spacious double lounge, providing a comfortable and inviting space for relaxation and entertainment.

Descending to the lower ground floor, you'll discover an attractive study area that opens up to a private terrace, creating a tranquil outdoor retreat. The modern open-plan kitchen and dining room on this level provide a perfect setting for culinary delights and social gatherings. Additionally, this floor benefits from a separate entrance directly accessible from the underground parking space, ensuring convenience and ease of access.





The first floor of this remarkable residence offers two sizable double bedrooms, each accompanied by its own en-suite bathroom. The presence of en-suite facilities enhances privacy and luxury. Another double bedroom, a guest cloakroom, and access to the roof terrace can be found on the top floor, allowing residents to enjoy al fresco moments and panoramic views.

Conveniently positioned, this property benefits from excellent transport links, with Chalk Farm Underground Station (Northern Line) in close proximity. The vibrant Primrose Hill Park and the stunning Regents Park are just a short walk away, providing ample opportunities for leisurely strolls and enjoying the beauty of nature.







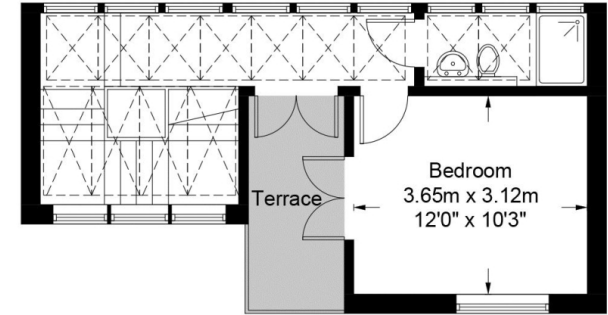


Scan for out video walkthrough

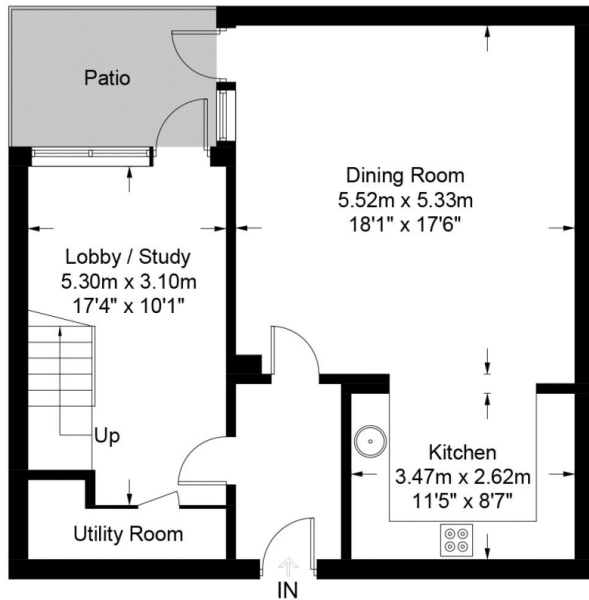


Whittlebury Mews, NW1

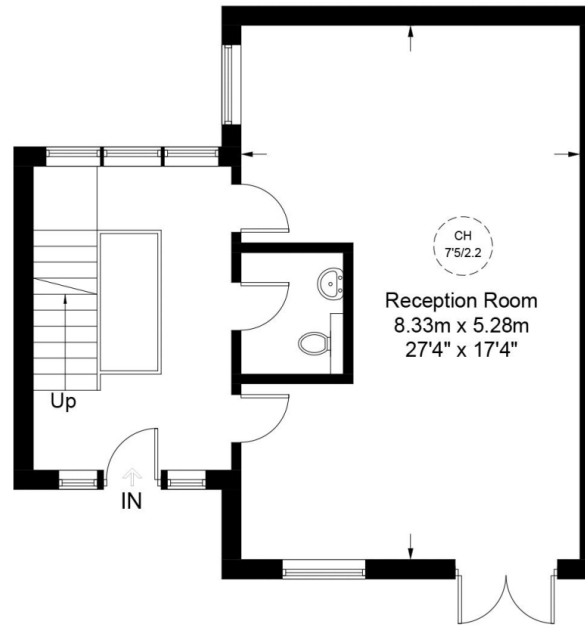
Approximate Gross Internal Area = 2300 sq ft / 213.7 sq m



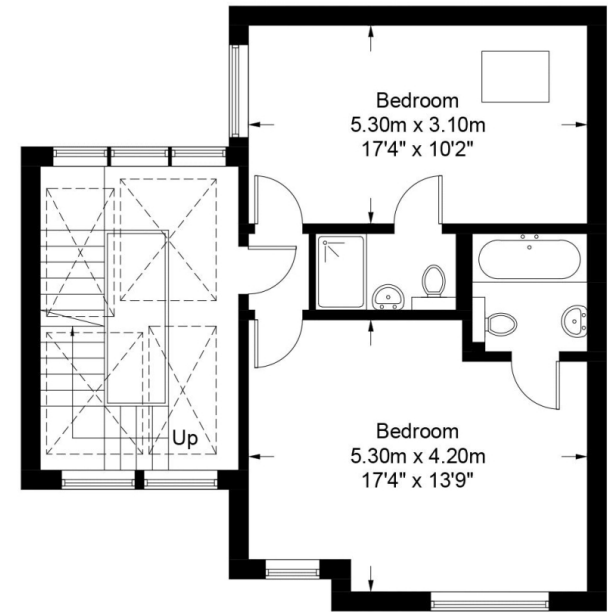
Second Floor



Lower Ground Floor



Ground Floor



First Floor



**Certified
Property
Measurer**

This plan is for layout guidance only. Not drawn to scale unless stated. Windows and door openings are approximate. Whilst every care is taken in the preparation of this plan, please check all dimensions, shapes and compass bearings before making any decisions reliant upon them. (ID915625)

Particulars

Property

Whittlebury Mews East, Primrose Hill, London, NW1
£1,850,000

Rooms



2



3



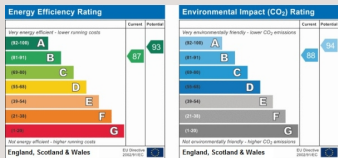
3

Features

- Private underground parking with direct access to property
- Located moments from Primrose Hill park and high street
- Three Double Bedrooms
- Benefits from all bedrooms having gorgeous en-suites

Information

Council Tax



Jonathan Singer

jonathan.singer@vitaproperties.uk
+4478 8428 6414



Scan for our website





T: +4420 7759 2199

E: enquiries@vitaproperties.uk

Disclaimer: These particulars are prepared as a general guide for prospective purchasers or tenants and do not constitute, nor constitute part of, an offer or contract. All statements, descriptions, and measurements contained herein are given in good faith and are believed to be correct at the time of printing, but any intending purchaser or tenant should not rely on them as statements or representations of fact and must satisfy themselves by inspection or otherwise as to their correctness. Floor plans and photographs are for illustrative purposes only and may not be to scale. The position and size of doors, windows, appliances, and other features are approximate. Anti-Money Laundering (AML): In line with the Money Laundering, Terrorist Financing and Transfer of Funds Regulations 2017, we are required to carry out customer due diligence checks. Buyers/tenants will be asked to provide proof of identity, address, and source of funds before a sale or rental can be agreed. Data Protection (GDPR): Personal information supplied to Vita Properties will be processed in accordance with the General Data Protection Regulation (GDPR). Your details may be retained for legitimate business purposes relating to property services. Full details of our Privacy Policy are available on request.

All rights reserved.