



Westfield

15 KIDDERPORE AVENUE, HAMPSTEAD, LONDON, NW3

£895



A beautiful three-bedroom apartment in one of Hampstead's most popular developments.

Comprising of a large imposing living/ dining room with gorgeous feature bay windows, flooding the property with light, a fully equipped kitchen/ breakfast room with access onto the massive wrap around balcony.

The master bedroom also offers access onto the balcony and has its own en-suite and the further two bedrooms (currently being used as TV room and study) are of a very nice size.

Overall this whole property oozes decadence and old-style luxury.

The living room makes a very grand statement and the style is beautifully echoed throughout the property.

Residents of Westfield Lodge have the privilege of access to the private on-site gym, swimming pool, health spa, extensive communal gardens and a dedicated 24-hour concierge.

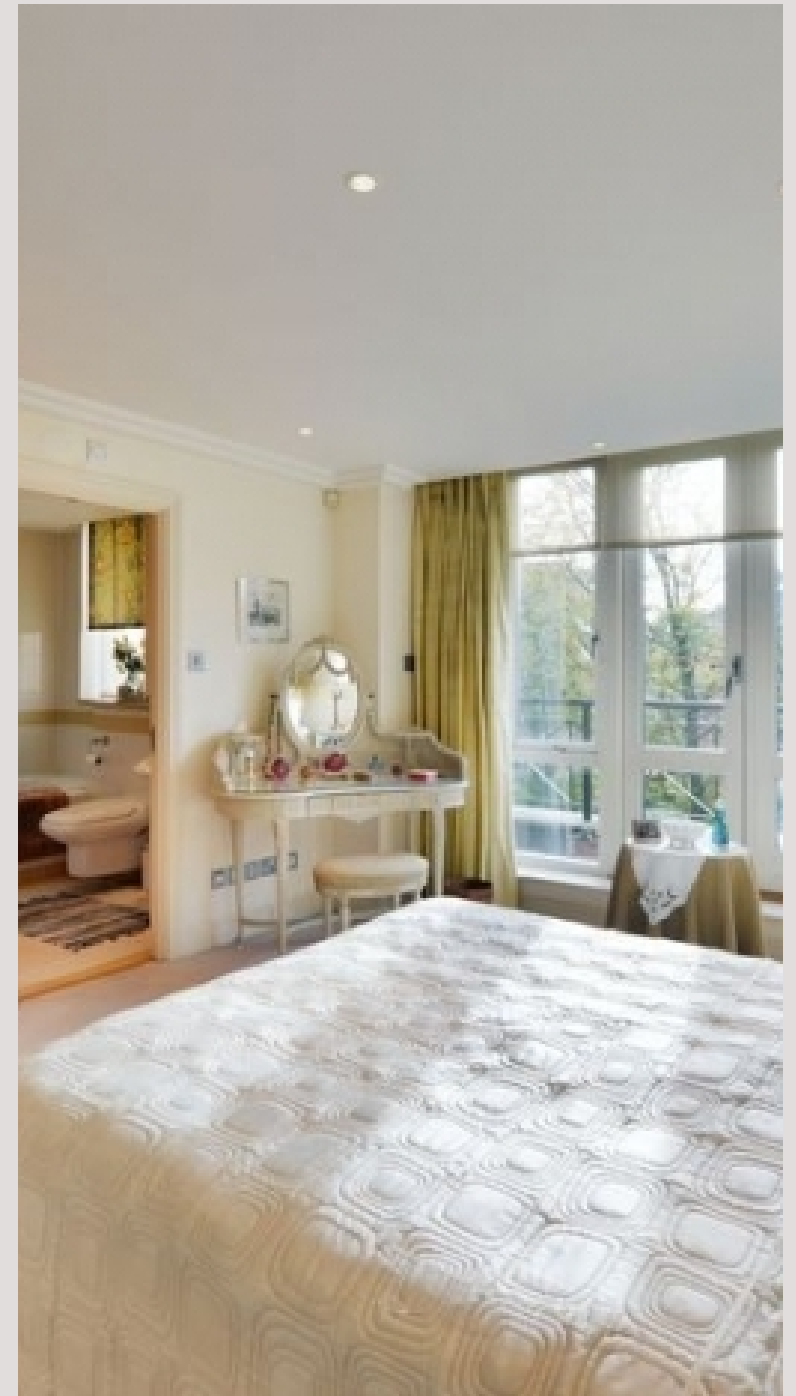
This property comes with one allocated parking space.



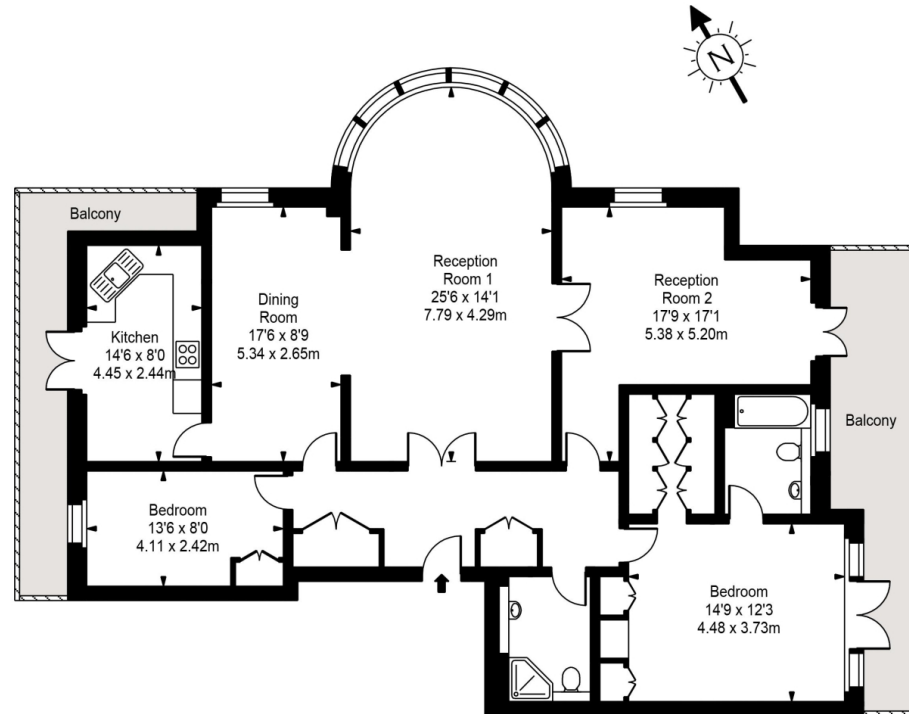








Westfield



First Floor



Approx Gross Internal Area **1514 Sq Ft - 140.64 Sq M**

FOR ILLUSTRATIVE PURPOSES ONLY. NOT TO SCALE.

Whilst every attempt has been made to ensure the accuracy of the floorplan shown, all measurements, positioning, fixtures, fittings and any other data shown are an approximate interpretation for illustrative purposes only and are not to scale. No responsibility is taken for any error, omission, miss-statement or use of data shown.

Floor plan by www.bestangle.co.uk

Particulars

Property

Westfield, 15 Kidderpore Avenue, Hampstead, London, NW3
£895

Rooms



2



2



3

Features

- Three Bed, Two Bath
- Stunning Interior
- Wrap Around Terrace
- 24 Hour Concierge, Gym and Pool

Information

Council Tax

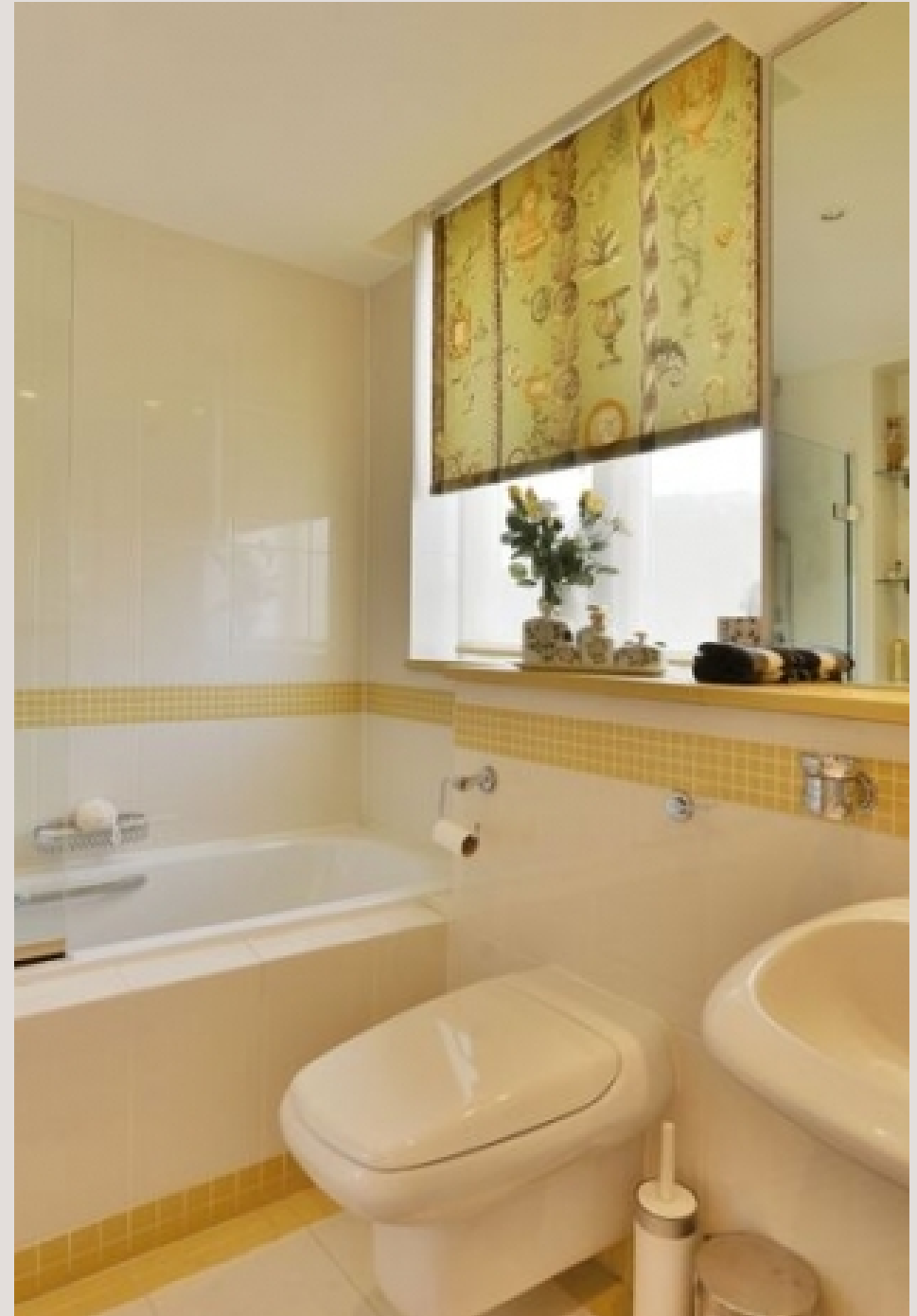


Oliver Kent

oliver.kent@vitaproperties.uk
+4477 7274 0351



Scan for our website





T: +4420 7759 2199
E: enquiries@vitaproperties.uk

Disclaimer: These particulars are prepared as a general guide for prospective purchasers or tenants and do not constitute, nor constitute part of, an offer or contract. All statements, descriptions, and measurements contained herein are given in good faith and are believed to be correct at the time of printing, but any intending purchaser or tenant should not rely on them as statements or representations of fact and must satisfy themselves by inspection or otherwise as to their correctness. Floor plans and photographs are for illustrative purposes only and may not be to scale. The position and size of doors, windows, appliances, and other features are approximate. Anti-Money Laundering (AML): In line with the Money Laundering, Terrorist Financing and Transfer of Funds Regulations 2017, we are required to carry out customer due diligence checks. Buyers/tenants will be asked to provide proof of identity, address, and source of funds before a sale or rental can be agreed. Data Protection (GDPR): Personal information supplied to Vita Properties will be processed in accordance with the General Data Protection Regulation (GDPR). Your details may be retained for legitimate business purposes relating to property services. Full details of our Privacy Policy are available on request.

All rights reserved.