



Fairhazel Gardens  
SOUTH HAMPSTEAD, LONDON, NW6  
£800,000



We are delighted to offer this fully refurbished two bedroom duplex apartment set within a period conversion moments from West Hampstead and Finchley Road's tube and shops.

The property has been beautifully laid out and benefits from an off street parking and a private patio garden leading to extensive communal gardens.

The property further comprises two double bedrooms a separate allocated study area, a fully tiled bathroom and a large fully fitted kitchen.





We are delighted to offer this fully refurbished two bedroom duplex apartment set within a period conversion moments from West Hampstead and Finchley Road's tube and shops. The property has been beautifully laid out and benefits from an off street parking and a private patio garden leading to extensive communal gardens.

The property further comprises two double bedrooms a separate allocated study area, a fully tiled bathroom and a large fully fitted kitchen.



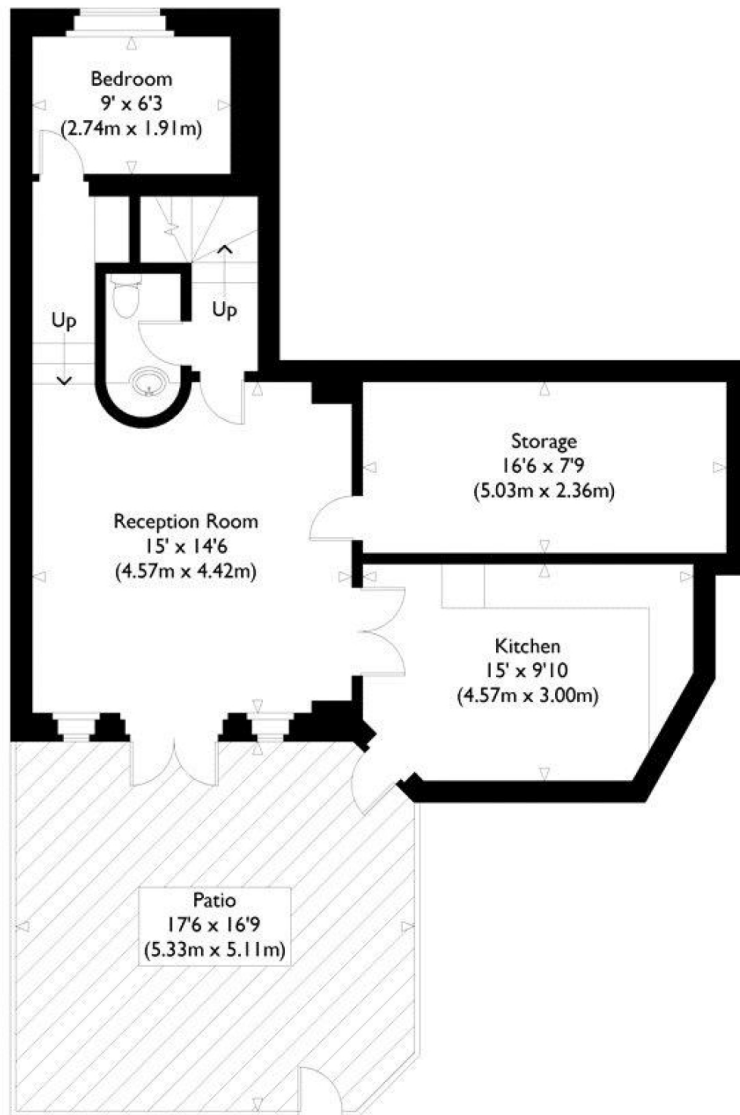




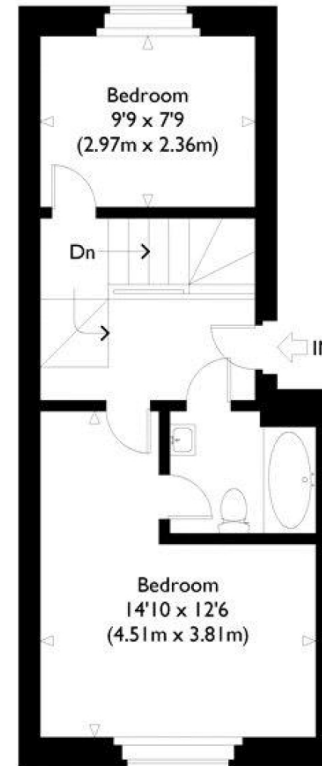


# Fairhazel Gardens, NW6

Approximate Gross Internal Floor Area : 1002 sq ft / 93.1 sq m



Lower Ground Floor



Ground Floor



Ground Floor

Illustration for identification purposes only, measurements are approximate, not to scale.

# Particulars

## Property

Fairhazel Gardens, South Hampstead, London, NW6  
£800,000

## Rooms

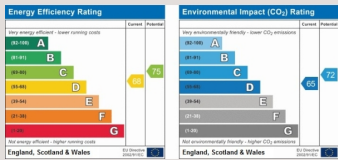


## Features

- Newly refurbished throughout
- Private patio leading onto extensive communal gardens
- An allocated off street parking space
- Moments from West Hampstead and Finchley Road tube

## Information

Council Tax



Oliver Kent

[oliver.kent@vitaproperties.uk](mailto:oliver.kent@vitaproperties.uk)  
+4477 7274 0351



Scan for our website





T: +4420 7759 2199

E: [enquiries@vitaproperties.uk](mailto:enquiries@vitaproperties.uk)

Disclaimer: These particulars are prepared as a general guide for prospective purchasers or tenants and do not constitute, nor constitute part of, an offer or contract. All statements, descriptions, and measurements contained herein are given in good faith and are believed to be correct at the time of printing, but any intending purchaser or tenant should not rely on them as statements or representations of fact and must satisfy themselves by inspection or otherwise as to their correctness. Floor plans and photographs are for illustrative purposes only and may not be to scale. The position and size of doors, windows, appliances, and other features are approximate. Anti-Money Laundering (AML): In line with the Money Laundering, Terrorist Financing and Transfer of Funds Regulations 2017, we are required to carry out customer due diligence checks. Buyers/tenants will be asked to provide proof of identity, address, and source of funds before a sale or rental can be agreed. Data Protection (GDPR): Personal information supplied to Vita Properties will be processed in accordance with the General Data Protection Regulation (GDPR). Your details may be retained for legitimate business purposes relating to property services. Full details of our Privacy Policy are available on request.

All rights reserved.