



Fleet Road

HAMPSTEAD HEATH, LONDON, NW3

£400

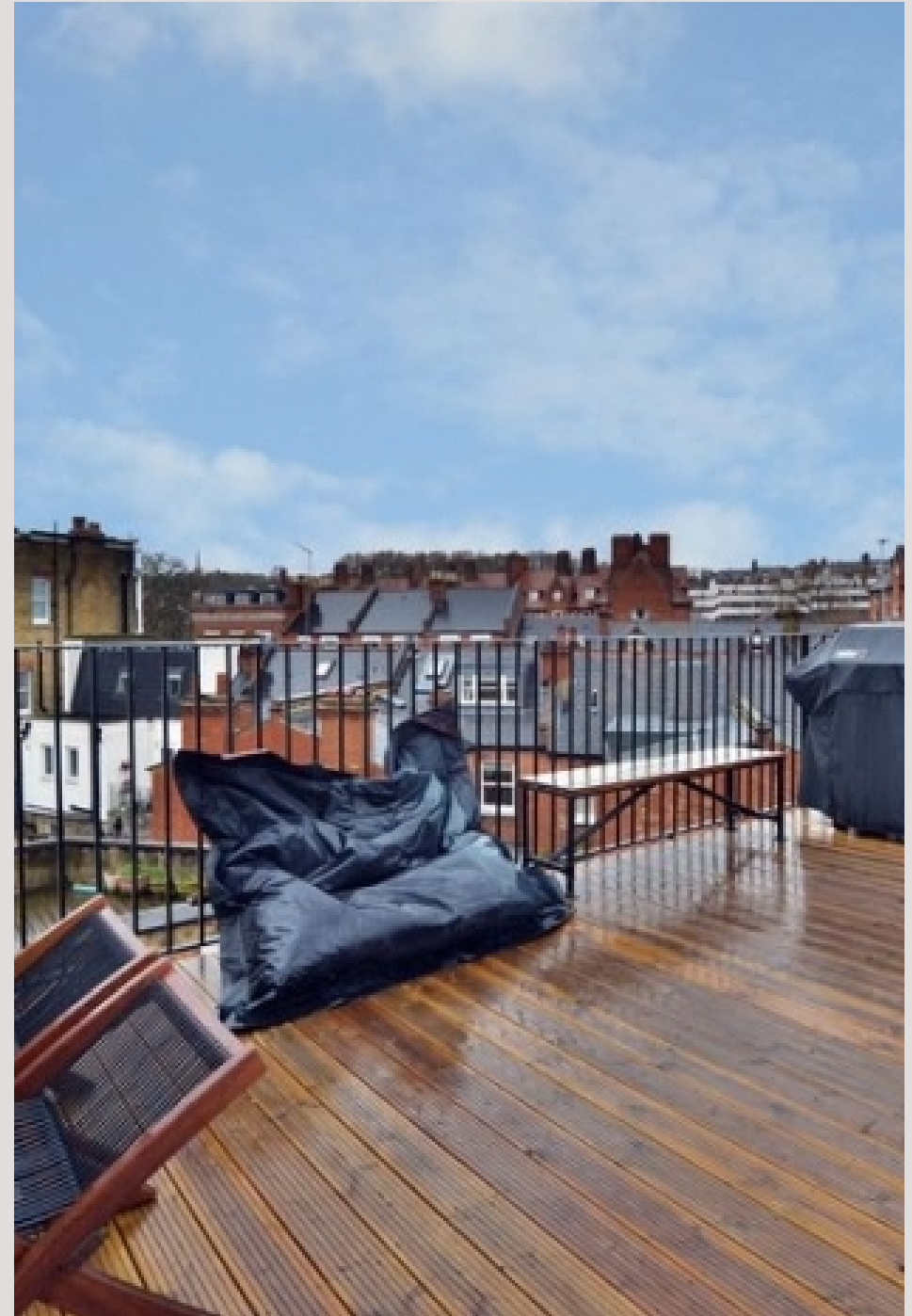


Available 14 July - Situated in the heart of South End Green, ideally located for the amenities and transport links of both South End Green and Haverstock Hill is this superb one bedroom top floor flat.

The property comprises a beautiful roof terrace perfect for a summer BBQ, a bright reception room with a newly modern fitted kitchen and a fully tiled shower room.

Fleet Road is well located for the extensive open spaces of Hampstead Heath and the closest stations are Hampstead Heath Overground station and Belsize Park Underground station (Northern Line).

Viewings are highly recommended

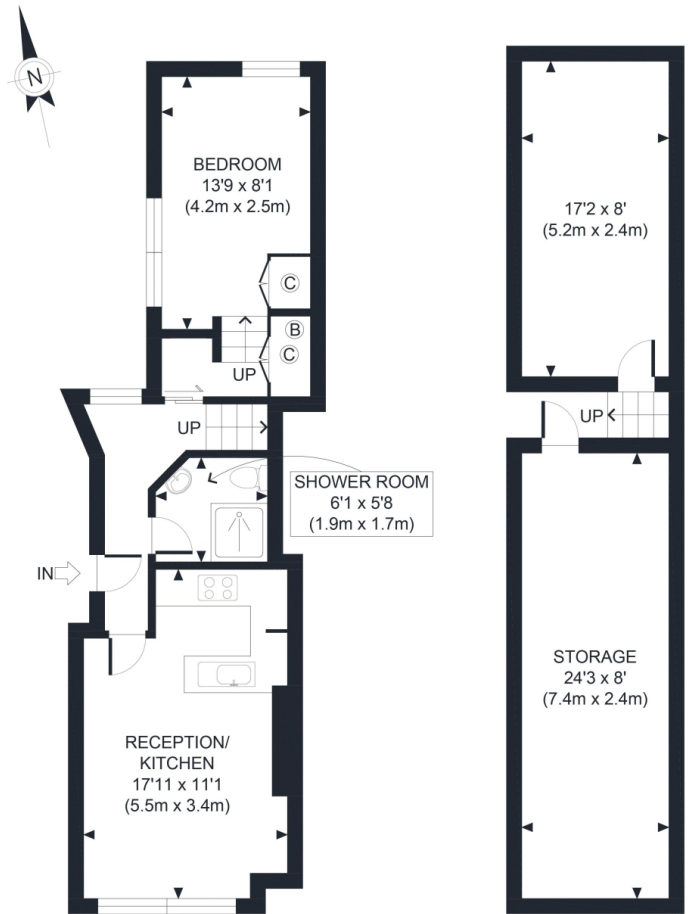













TOP FLOOR

STORAGE  
GROSS INTERNAL  
FLOOR AREA 331 SQ FT

APPROX. GROSS INTERNAL FLOOR AREA WITH STORAGE 747 SQ FT / 69 SQM  
 APPROX. GROSS INTERNAL FLOOR AREA WITHOUT STORAGE 416 SQ FT / 39 SQM  
 Ref: Copyright **photoplan** 

Disclaimer: Floor plan measurements are approximate and are for illustrative purposes only. While we do not doubt the floor plan accuracy and completeness, you or your advisors should conduct a careful, independent investigation of the property in respect of monetary valuation

# Particulars

## Property

Fleet Road, Hampstead Heath, London, NW3  
£400

## Rooms

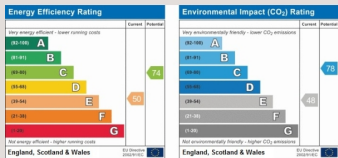


## Features

- An abundance of storage
- A large, refurbished private roof terrace
- Available 14 July
- Quooker Fusion Kitchen Tap (Filtered drinking water, instant Boiling water)

## Information

Council Tax



Oliver Kent

oliver.kent@vitaproperties.uk  
+4477 7274 0351



Scan for our website





T: +4420 7759 2199  
E: [enquiries@vitaproperties.uk](mailto:enquiries@vitaproperties.uk)

Disclaimer: These particulars are prepared as a general guide for prospective purchasers or tenants and do not constitute, nor constitute part of, an offer or contract. All statements, descriptions, and measurements contained herein are given in good faith and are believed to be correct at the time of printing, but any intending purchaser or tenant should not rely on them as statements or representations of fact and must satisfy themselves by inspection or otherwise as to their correctness. Floor plans and photographs are for illustrative purposes only and may not be to scale. The position and size of doors, windows, appliances, and other features are approximate. Anti-Money Laundering (AML): In line with the Money Laundering, Terrorist Financing and Transfer of Funds Regulations 2017, we are required to carry out customer due diligence checks. Buyers/tenants will be asked to provide proof of identity, address, and source of funds before a sale or rental can be agreed. Data Protection (GDPR): Personal information supplied to Vita Properties will be processed in accordance with the General Data Protection Regulation (GDPR). Your details may be retained for legitimate business purposes relating to property services. Full details of our Privacy Policy are available on request.

All rights reserved.