



Brondesbury Villas
QUEENS PARK, LONDON, NW6

£950,000



As main agents we are delighted to bring this beautifully interior designed two bed, two bath to the market. When you enter this apartment you are welcomed by a large hallway with high ceilings, instantly giving a fantastic sense of space. Straight ahead is the stunning open-plan kitchen diner with fabulous floor to ceiling windows flooding the room with natural light, this offers access onto the impressive south facing garden area. Follow the garden to the back and you will find a further surprise; your very own outhouse which is an ideal space to be used as an office, for summer entertaining or useful storage space. This beautiful apartment offers two generously proportioned bedrooms both offering large built in wardrobes, the master bedroom also benefits further from a built-in dressing table and en-suite. Further benefits include under floor heating, concrete flooring, feature walls and plenty of storage.

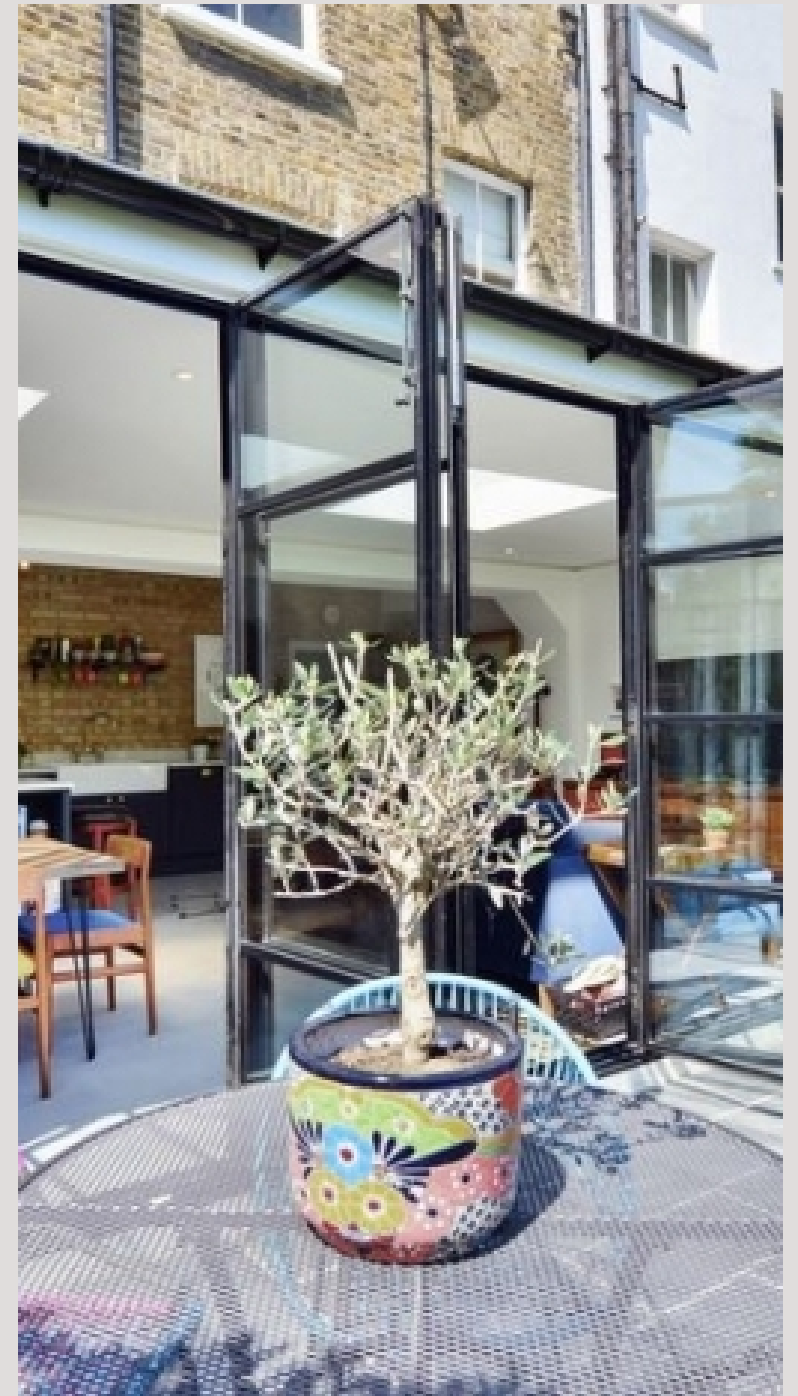
This property is well situated being within walking distance of Queens Park Station & High Street, Kilburn High Road Station (Overground) and Kilburn Park Station (Bakerloo Line). Offered chain free with the share of freehold



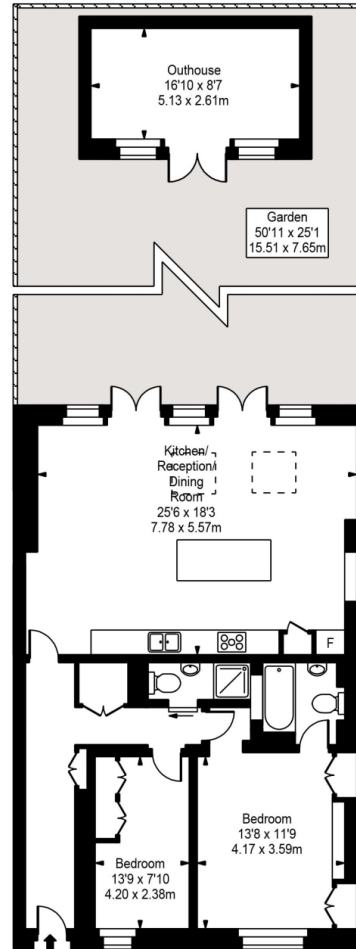








Brondesbury Villas



Lower Ground Floor



Approx Gross Internal Area 1229 Sq Ft - 114.16 Sq M
(Including Outhouse)

FOR ILLUSTRATIVE PURPOSES ONLY. NOT TO SCALE.

Whilst every attempt has been made to ensure the accuracy of the floorplan shown, all measurements, positioning, fixtures, fittings and any other data shown are an approximate interpretation for illustrative purposes only and are not to scale. No responsibility is taken for any error, omission, mis-statement or use of data shown. Floor plan by www.bestangle.co.uk

Particulars

Property

Brondesbury Villas, Queens Park, London, NW6
£950,000

Rooms



1



2



2

Features

- An interior designed 2 bedroom south facing garden apartment
- Private entrance
- Soft cement flooring with under floor heating throughout
- Beautiful entertaining space

Information

Council Tax

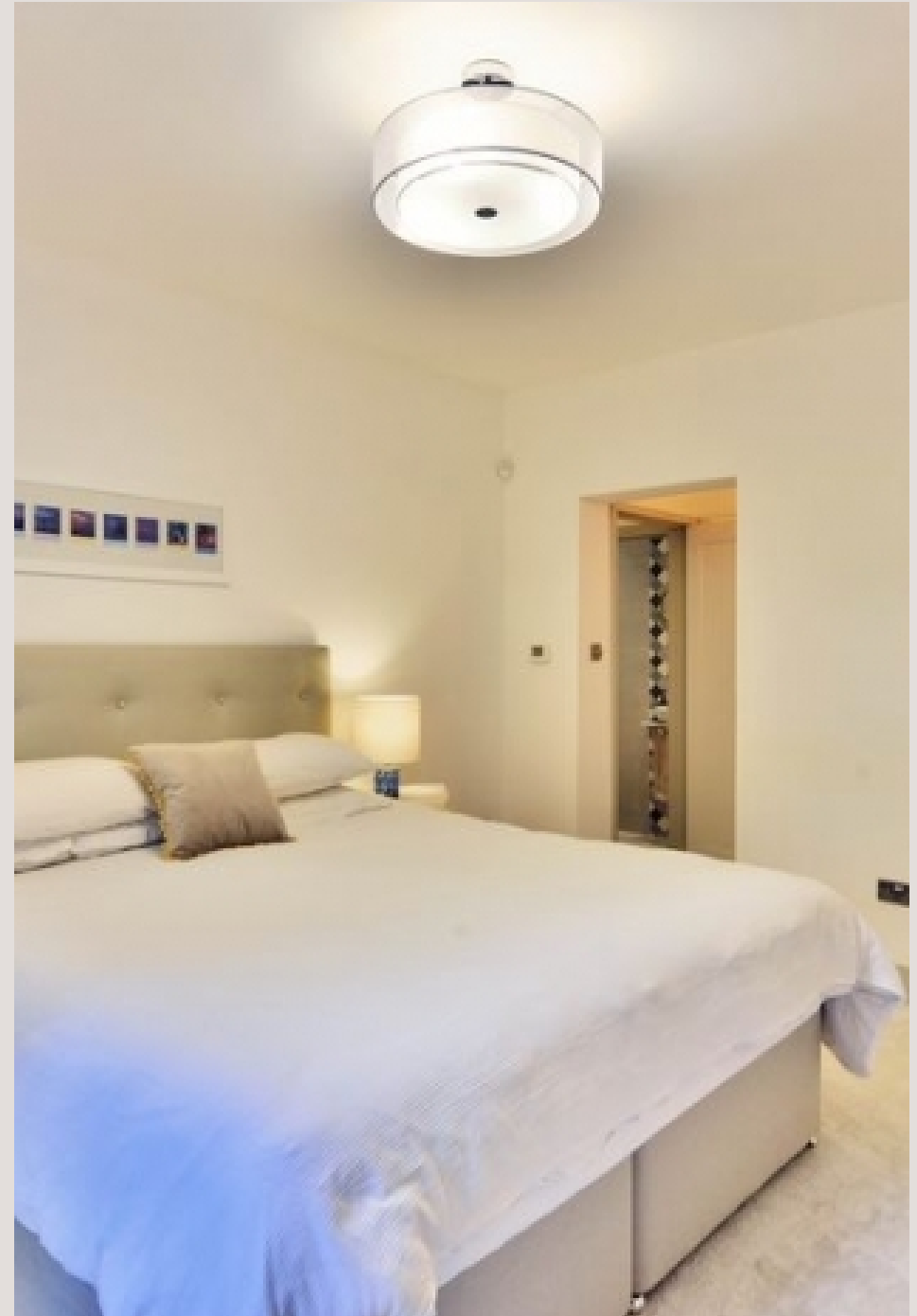


Oliver Kent

oliver.kent@vitaproperties.uk
+4477 7274 0351



Scan for our website





T: +4420 7759 2199

E: enquiries@vitaproperties.uk

Disclaimer: These particulars are prepared as a general guide for prospective purchasers or tenants and do not constitute, nor constitute part of, an offer or contract. All statements, descriptions, and measurements contained herein are given in good faith and are believed to be correct at the time of printing, but any intending purchaser or tenant should not rely on them as statements or representations of fact and must satisfy themselves by inspection or otherwise as to their correctness. Floor plans and photographs are for illustrative purposes only and may not be to scale. The position and size of doors, windows, appliances, and other features are approximate. Anti-Money Laundering (AML): In line with the Money Laundering, Terrorist Financing and Transfer of Funds Regulations 2017, we are required to carry out customer due diligence checks. Buyers/tenants will be asked to provide proof of identity, address, and source of funds before a sale or rental can be agreed. Data Protection (GDPR): Personal information supplied to Vita Properties will be processed in accordance with the General Data Protection Regulation (GDPR). Your details may be retained for legitimate business purposes relating to property services. Full details of our Privacy Policy are available on request.

All rights reserved.