



Marlborough Hill
ST JOHNS WOOD, LONDON, NW8

£1,650



Available 03 April 2021 is this recently modernised and moments from the American School is this 5 Bedrooms; 3 Bathrooms (1 en Suite); town house comprising of, a guest cloakroom; open plan Dining/Family Room leading onto a private rear garden. Loudoun Road is with 10 minutes to walk to St Johns Wood tube and shops and 8 mins walk to Swiss Cottage Tube (Both on the Jubilee line) St John's Wood has a distinctly English village feel yet enjoys a cosmopolitan population and mix of restaurants and shops. Local attractions include the Abbey Road Studios, Lord's Cricket Ground and the green surrounds of Regent's Park and Primrose Hill. The American School in Loudoun Road is very popular with many executives relocating to London with their families, and St. John's Wood underground station (Jubilee line) is just two stops from Bond Street in the heart of the West End.



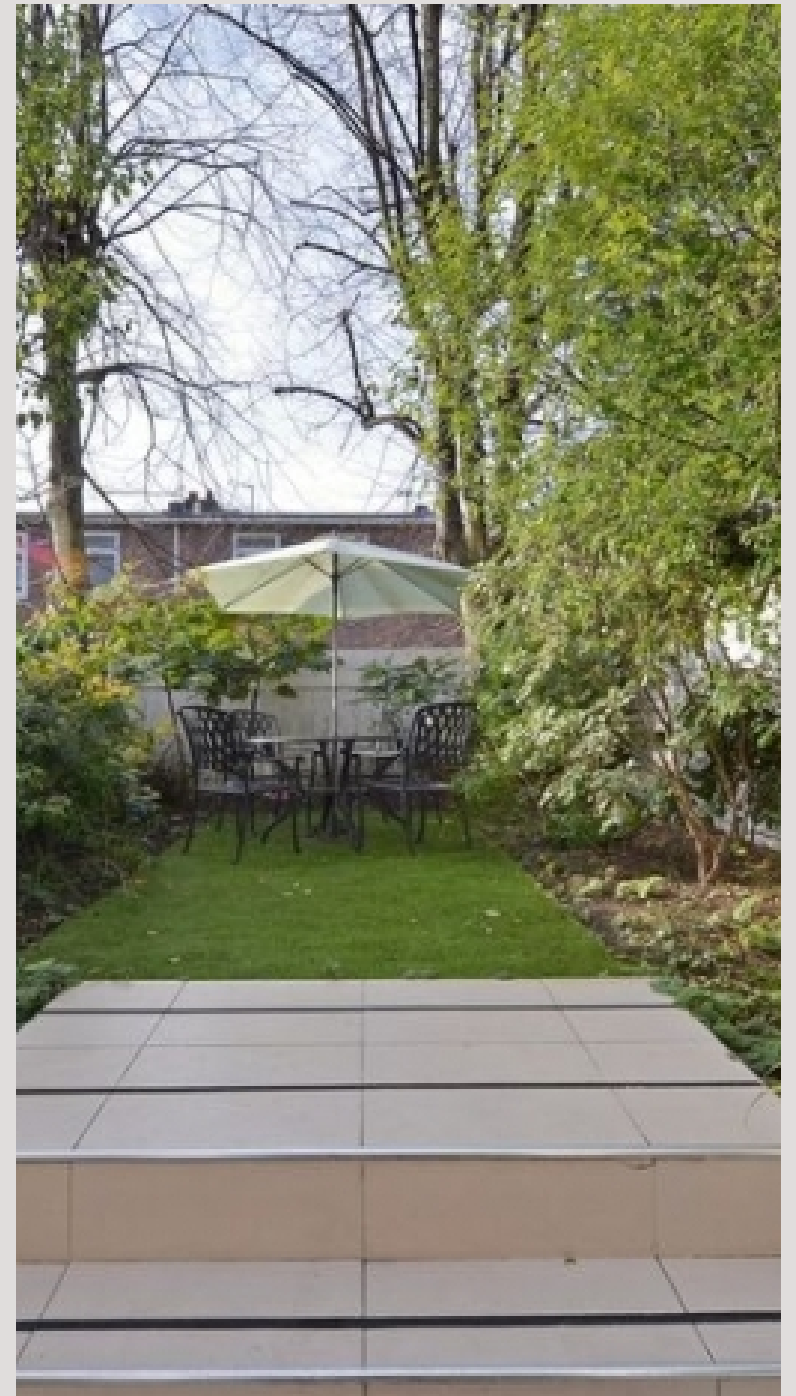


St John's Wood in Zone 2, is situated on the Jubilee Line which is one stop from Baker Street underground making it easy to reach central London. Oxford Circus and the West End are just 10 minutes away. Regent's Park and Great Portland underground stations are situated in Zone 1 with access to various lines



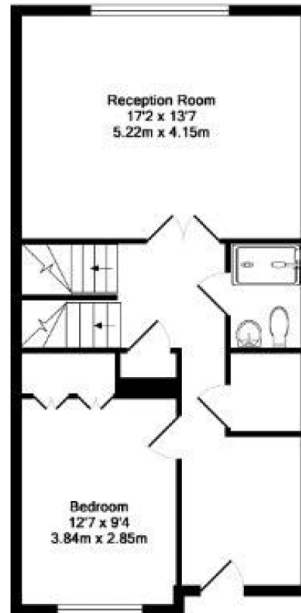




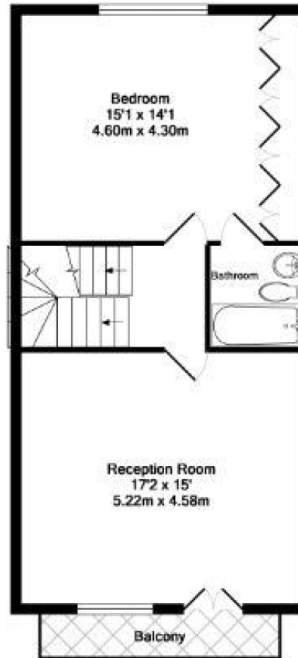




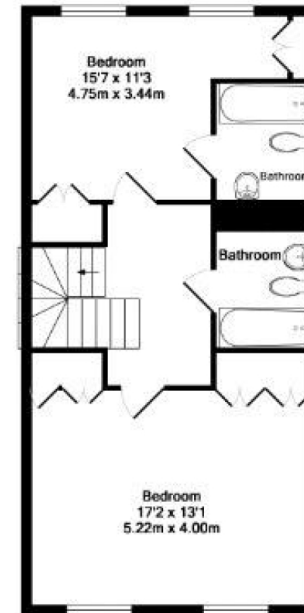
Lower Ground Floor
Approx. Floor
Area 796 Sq.Ft.
(74.0 Sq.M.)



Ground Floor
Approx. Floor
Area 593 Sq.Ft.
(55.1 Sq.M.)



1st Floor
Approx. Floor
Area 606 Sq.Ft.
(56.3 Sq.M.)



2nd Floor
Approx. Floor
Area 597 Sq.Ft.
(55.4 Sq.M.)

Total Approx. Floor Area 2592 Sq.Ft. (240.8 Sq.M.)

PLANNING LTD has prepared a preliminary floor plan for illustration purposes only. It is not intended to be used for construction purposes. Measurements of plots, sections and areas are approximate and may vary by a small amount. All dimensions are in meters. For more information please visit www.planning.co.uk
Tel: 0447 274 8100
Email: info@planning.co.uk

Particulars

Property

Marlborough Hill, St Johns Wood, London, NW8
£1,650

Rooms

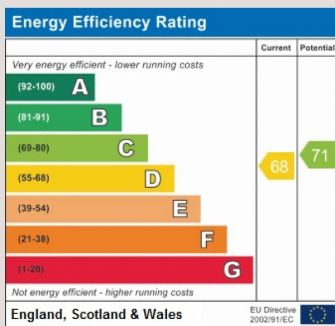
-  3
-  3
-  5+

Features

- Eat in Kitchen
- Five Receptions
- Within moments of the American School
- Fully Modernised

Information

Council Tax



Oliver Kent

oliver.kent@vitaproperties.uk
+4477 7274 0351



Scan for our website





T: +4420 7759 2199

E: enquiries@vitaproperties.uk

Disclaimer: These particulars are prepared as a general guide for prospective purchasers or tenants and do not constitute, nor constitute part of, an offer or contract. All statements, descriptions, and measurements contained herein are given in good faith and are believed to be correct at the time of printing, but any intending purchaser or tenant should not rely on them as statements or representations of fact and must satisfy themselves by inspection or otherwise as to their correctness. Floor plans and photographs are for illustrative purposes only and may not be to scale. The position and size of doors, windows, appliances, and other features are approximate. Anti-Money Laundering (AML): In line with the Money Laundering, Terrorist Financing and Transfer of Funds Regulations 2017, we are required to carry out customer due diligence checks. Buyers/tenants will be asked to provide proof of identity, address, and source of funds before a sale or rental can be agreed. Data Protection (GDPR): Personal information supplied to Vita Properties will be processed in accordance with the General Data Protection Regulation (GDPR). Your details may be retained for legitimate business purposes relating to property services. Full details of our Privacy Policy are available on request.

All rights reserved.