



The Galleries

ABBEY ROAD, ST JOHNS WOOD, LONDON, NW8

£1,790



Available Now - Located only moments from transport and the array of local schools is this stunning and bright 3 bedroom penthouse apartment on the fourth floor of this portered building.

Benefiting from wood floors throughout and a private decked terrace the property comprises three bedrooms, two en suite bathrooms, family bathroom, double reception room and an open plan kitchen. Further benefits include an internal balcony, secure underground parking and 24 hour portorage.

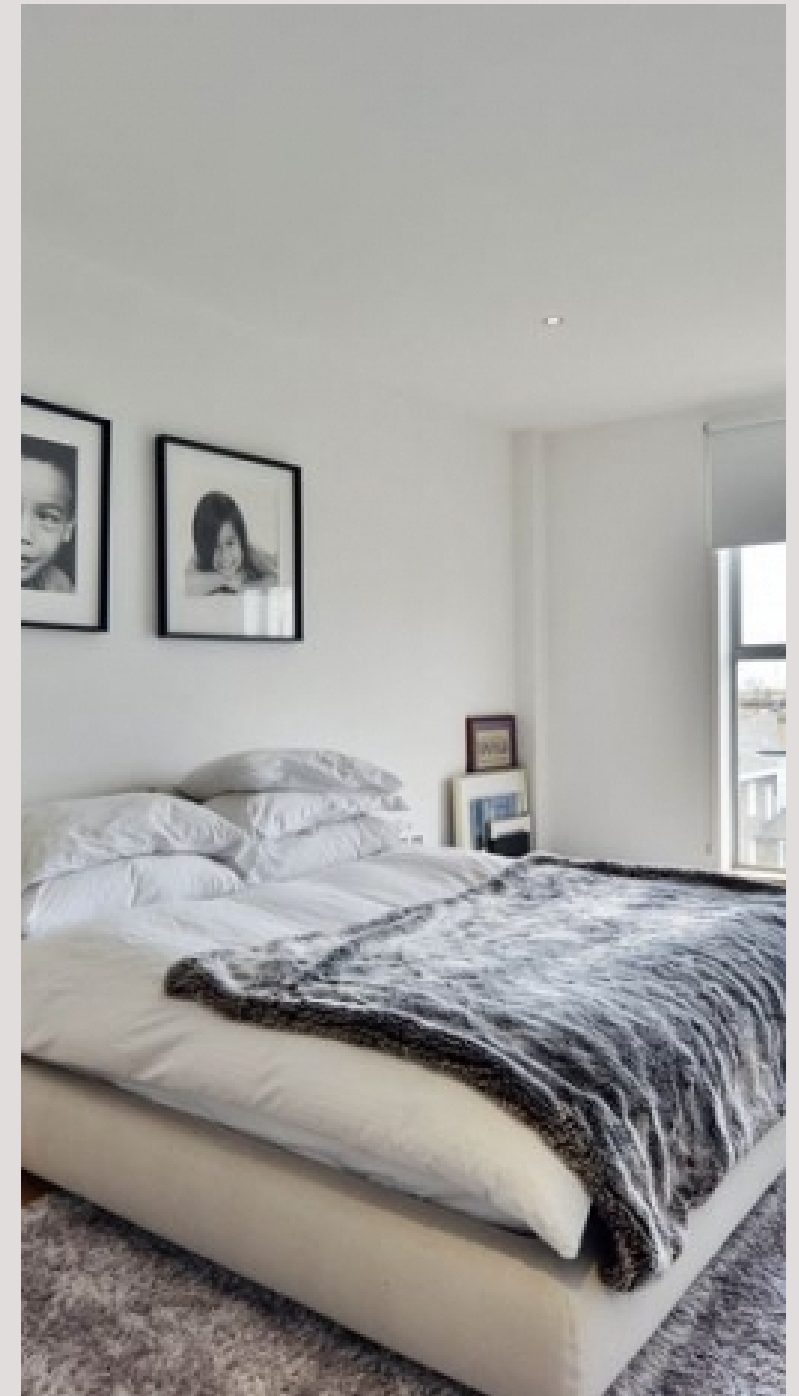
The Galleries are conveniently located for the amenities of both Abbey Road and St John's Wood High Street. St John's Wood Underground Station (Jubilee line) is also close by. St John's Wood is a well established residential area with wonderful shops, restaurants and transport facilities providing easy access to central London. Local attractions include the Abbey Road studios, made famous by the Beatles and Lords Cricket Ground. The American School in Loudoun Road is very popular with many executives relocating to London with their families and Regent's Park and Primrose Hill are a short stroll away



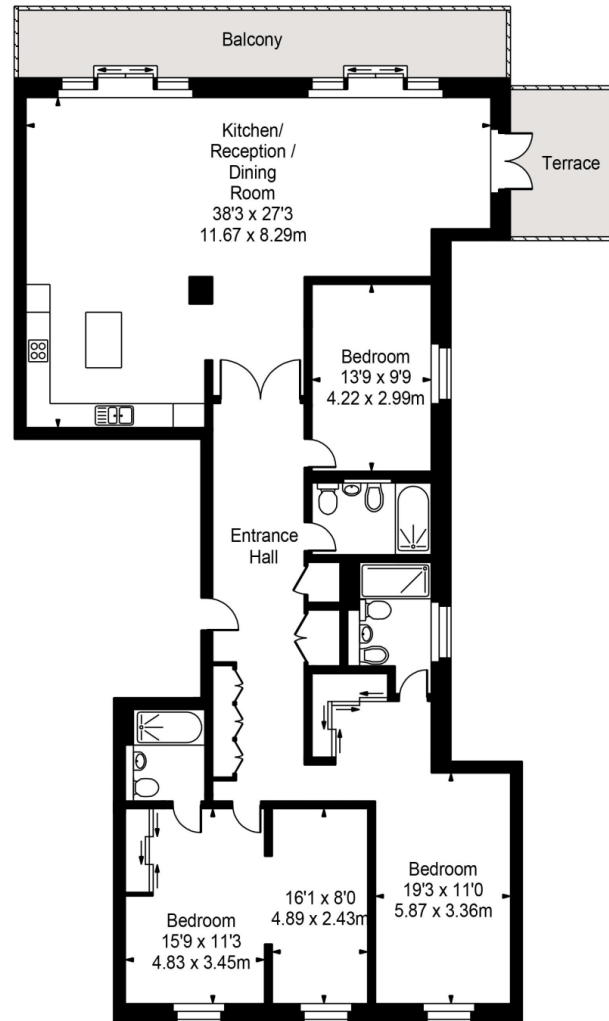








The Galleries



Fourth Floor



Approx Gross Internal Area **2123 Sq Ft - 197.24 Sq M**

FOR ILLUSTRATIVE PURPOSES ONLY. NOT TO SCALE.

Whilst every attempt has been made to ensure the accuracy of the floorplan shown, all measurements, positioning, fixtures, fittings and any other data shown are an approximate interpretation for illustrative purposes only and are not to scale. No responsibility is taken for any error, omission, miss-statement or use of data shown. Floor plan by www.bestangle.co.uk

Particulars

Property

The Galleries, Abbey Road, St Johns Wood, London, NW8
£1,790

Rooms



2



3



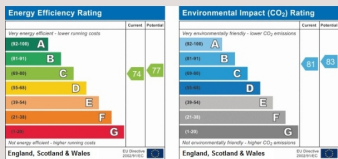
3

Features

- Offered as a 3 or 4 bed
- Penthouse apartment with 2 terraces
- Air conditioning
- Moments to shops, cafe's and restuarants

Information

Council Tax



Oliver Kent

oliver.kent@vitaproperties.uk
+4477 7274 0351



Scan for our website





T: +4420 7759 2199

E: enquiries@vitaproperties.uk

Disclaimer: These particulars are prepared as a general guide for prospective purchasers or tenants and do not constitute, nor constitute part of, an offer or contract. All statements, descriptions, and measurements contained herein are given in good faith and are believed to be correct at the time of printing, but any intending purchaser or tenant should not rely on them as statements or representations of fact and must satisfy themselves by inspection or otherwise as to their correctness. Floor plans and photographs are for illustrative purposes only and may not be to scale. The position and size of doors, windows, appliances, and other features are approximate. Anti-Money Laundering (AML): In line with the Money Laundering, Terrorist Financing and Transfer of Funds Regulations 2017, we are required to carry out customer due diligence checks. Buyers/tenants will be asked to provide proof of identity, address, and source of funds before a sale or rental can be agreed. Data Protection (GDPR): Personal information supplied to Vita Properties will be processed in accordance with the General Data Protection Regulation (GDPR). Your details may be retained for legitimate business purposes relating to property services. Full details of our Privacy Policy are available on request.

All rights reserved.