



Westfield Lodge

302 FINCHLEY ROAD, HAMPSTEAD, LONDON, NW3

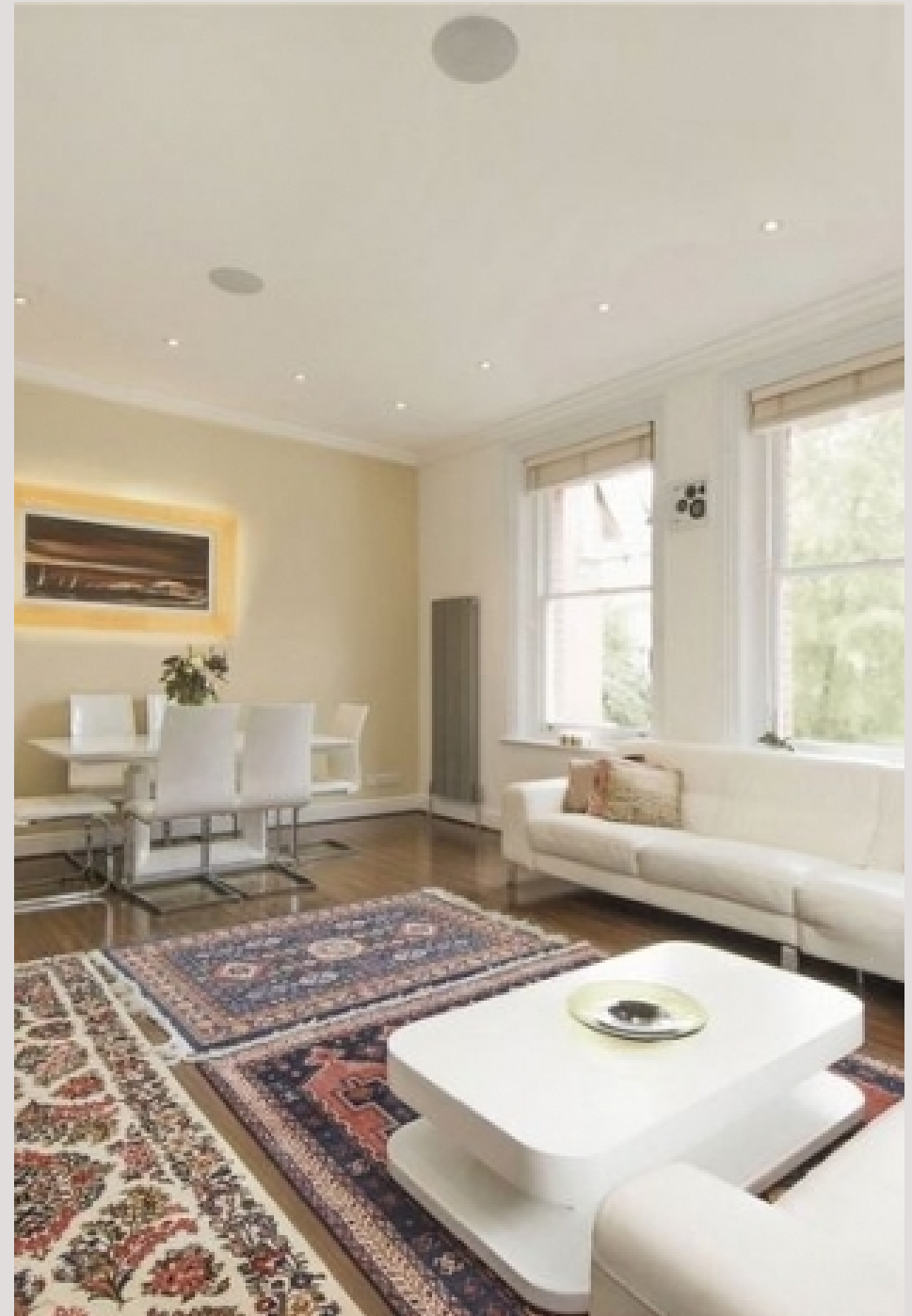
£850



We are delighted to offer as MAIN AGENTS this truly stunning and exceptional FOUR DOUBLE BEDROOM First Floor Split Apartment situated within one of Hampstead's finest modern developments.

The property comprises 1600 sq ft approx and benefits Three beautifully designed under floor heated contemporary Bathrooms with (TWO Ensuite) all with Hansgrohe raindance showers and Duvarit sanitary ware, brand new German Kitchen with Corian composite worktops including Bespoke Italian stone tiles with Siemens appliances, Home Automation throughout operated via iPad or Android phone with remote lighting and heating control, a large Reception Room/Dining Room, Home Cinema with 5.1 THX surround sound, speakers by Monitor Audio and hi-fi in every room with Sonos Compatibility.

Westfield also boasts a leisure complex that includes an indoor swimming pool, sauna, jacuzzi and a gymnasium as well as a 24 hour Concierge, stunning communal gardens and secure underground parking





We are delighted to offer as MAIN AGENTS this truly stunning and exceptional FOUR DOUBLE BEDROOM First Floor Split Apartment situated within one of Hampstead's finest modern developments.

The property comprises 1600 sq ft approx and benefits Three beautifully designed under floor heated contemporary Bathrooms with (TWO Ensuite) all with Hansgrohe raindance showers and Duvarit sanitary ware, brand new German Kitchen with Corian composite worktops including Bespoke Italian stone tiles with Siemens appliances, Home Automation throughout operated via iPad or Android phone with remote lighting and heating control, a large Reception Room/Dining Room, Home Cinema with 5.1 THX surround sound, speakers by Monitor Audio and hi-fi in every room with Sonos Compatibility.

Westfield also boasts a leisure complex that includes an indoor swimming pool, sauna, jacuzzi and a gymnasium as well as a 24 hour Concierge, stunning communal gardens and secure underground parking

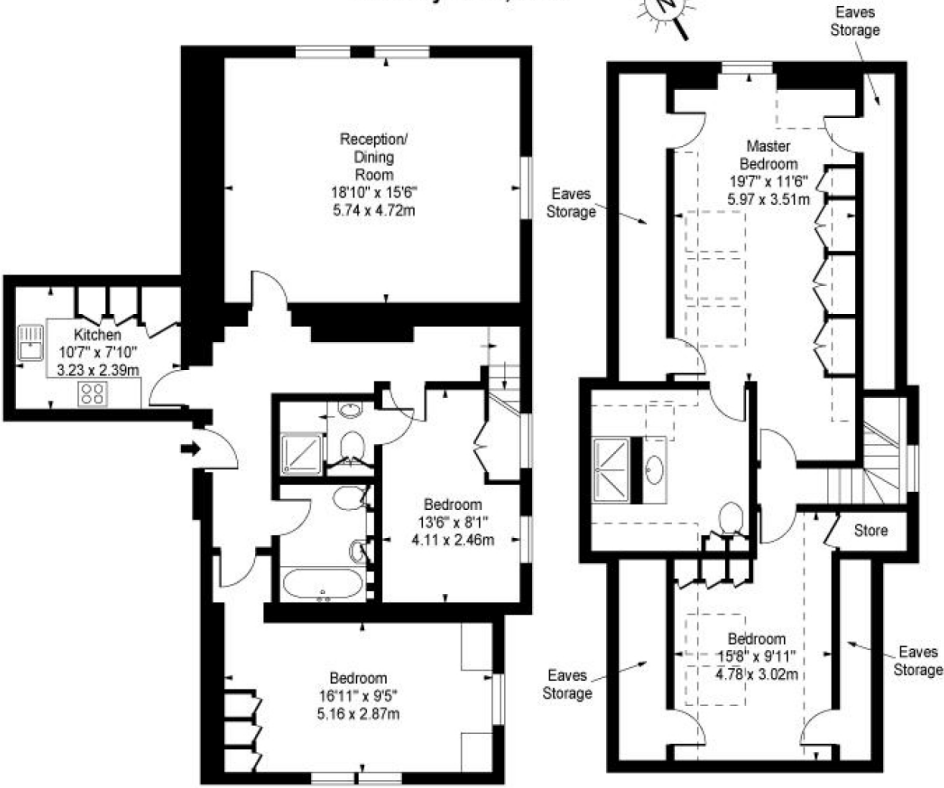








Westfield Lodge,
Finchley Road, NW3



First Floor

Second Floor

Approx Gross Internal Area 1500 Sq Ft - 139.35 Sq M
(Excluding Eaves Storage)

For Illustration Purposes Only - Not To Scale
www.goldlens.co.uk
Prepared for Chestertons
Ref. No. 002071

Particulars

Property

Westfield Lodge, 302 Finchley Road, Hampstead, London,
£850

Rooms



1



2



4

Features

- Parking & Porter
- Gym & Swimming Pool
- Modern Finish
- Moment to Hampstead, West Hampstead and Finchley Road

Information

Council Tax



Oliver Kent

oliver.kent@vitaproperties.uk
+4477 7274 0351



Scan for our website





T: +4420 7759 2199
E: enquiries@vitaproperties.uk

Disclaimer: These particulars are prepared as a general guide for prospective purchasers or tenants and do not constitute, nor constitute part of, an offer or contract. All statements, descriptions, and measurements contained herein are given in good faith and are believed to be correct at the time of printing, but any intending purchaser or tenant should not rely on them as statements or representations of fact and must satisfy themselves by inspection or otherwise as to their correctness. Floor plans and photographs are for illustrative purposes only and may not be to scale. The position and size of doors, windows, appliances, and other features are approximate. Anti-Money Laundering (AML): In line with the Money Laundering, Terrorist Financing and Transfer of Funds Regulations 2017, we are required to carry out customer due diligence checks. Buyers/tenants will be asked to provide proof of identity, address, and source of funds before a sale or rental can be agreed. Data Protection (GDPR): Personal information supplied to Vita Properties will be processed in accordance with the General Data Protection Regulation (GDPR). Your details may be retained for legitimate business purposes relating to property services. Full details of our Privacy Policy are available on request.

All rights reserved.