



Buckland Crescent  
SWISS COTTAGE, LONDON, NW3

£650



Available 10 April 2017 - A very high quality 2 bedroom property with study occupying the whole of the first floor of this stunning Victorian residence.

The property consist of a large 21ft reception, luxury fitted kitchen and small utility room, lots of storage, 2 good sized bedrooms, 1 study, 2 bathrooms (1 en suite).

Swiss Cottage underground station and Belsize Village are very close by.

Offered Part Furnished (Couples Only).

Parking available by separate negotiation









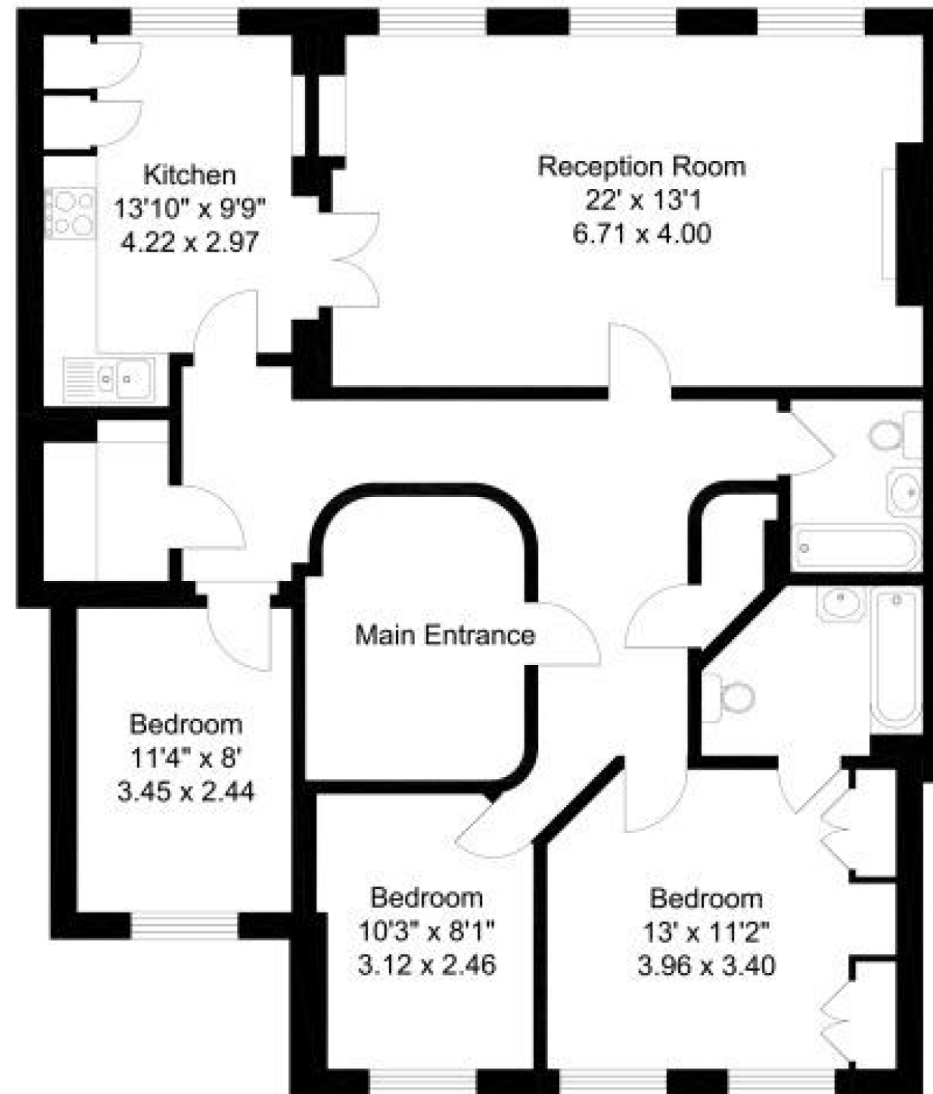


# Buckland Crescent, NW3

1,165 sq ft (108 sq m)

For identification purposes only. Not to scale

© Redinventory 2013.



First Floor

# Particulars

## Property

Buckland Crescent, Swiss Cottage, London, NW3  
£650

## Rooms



1



2



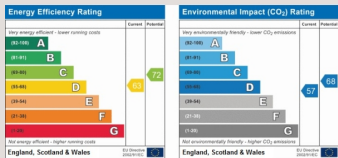
2

## Features

- 2 bed with a study
- Seconds to Swiss Cottage tube
- Moments to Belsize Park Village
- Parking by separate negotiation

## Information

Council Tax



Oliver Kent

[oliver.kent@vitaproperties.uk](mailto:oliver.kent@vitaproperties.uk)  
+4477 7274 0351



Scan for our website





T: +4420 7759 2199

E: [enquiries@vitaproperties.uk](mailto:enquiries@vitaproperties.uk)

Disclaimer: These particulars are prepared as a general guide for prospective purchasers or tenants and do not constitute, nor constitute part of, an offer or contract. All statements, descriptions, and measurements contained herein are given in good faith and are believed to be correct at the time of printing, but any intending purchaser or tenant should not rely on them as statements or representations of fact and must satisfy themselves by inspection or otherwise as to their correctness. Floor plans and photographs are for illustrative purposes only and may not be to scale. The position and size of doors, windows, appliances, and other features are approximate. Anti-Money Laundering (AML): In line with the Money Laundering, Terrorist Financing and Transfer of Funds Regulations 2017, we are required to carry out customer due diligence checks. Buyers/tenants will be asked to provide proof of identity, address, and source of funds before a sale or rental can be agreed. Data Protection (GDPR): Personal information supplied to Vita Properties will be processed in accordance with the General Data Protection Regulation (GDPR). Your details may be retained for legitimate business purposes relating to property services. Full details of our Privacy Policy are available on request.

All rights reserved.